



60 Radnor Drive, Southport
Southport



In Excess of **£325,000**

60 Radnor Drive

Southport, Southport

Council Tax band: D

Tenure: Leasehold

EPC Energy Efficiency Rating: E

EPC Environmental Impact Rating: F

- Characterful Detached Bungalow
- Recently Refurbished
- Two/Three Bedrooms
- Spacious Garden & Patio
- Period Features
- Integral Garage
- Greenhouse & Outbuildings
- Off-Street Parking
- Popular Residential Location
- No Chain



REAR GARDEN

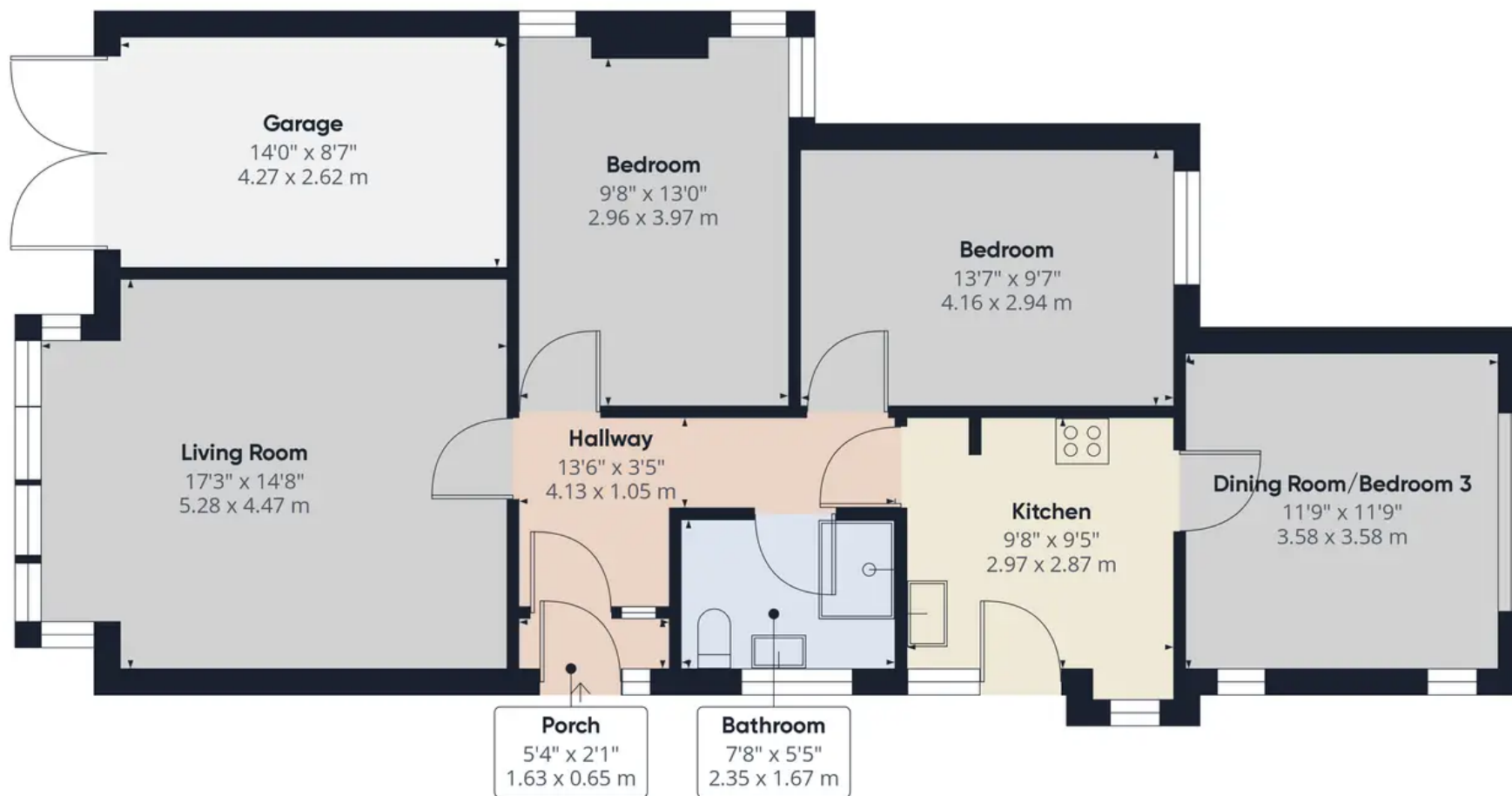
GARAGE

Single Garage

DRIVEWAY

2 Parking Spaces





Approximate total area⁽¹⁾

1002.47 ft²
93.13 m²

(1) Excluding balconies and terraces

While every attempt has been made to ensure accuracy, all measurements are approximate, not to scale. This floor plan is for illustrative purposes only.

GIRAFFE360



Nicholls and Barnes

Nicholls & Barnes Estate Agents, 43 Hoghton Street, Southport PR9 0PG

01704 541 414 • sales@nichollsandbarnes.net • nichollsandbarnes.net



**NICHOLLS
& BARNES**

ESTATE AGENTS

