



Park Avenue West

Epsom

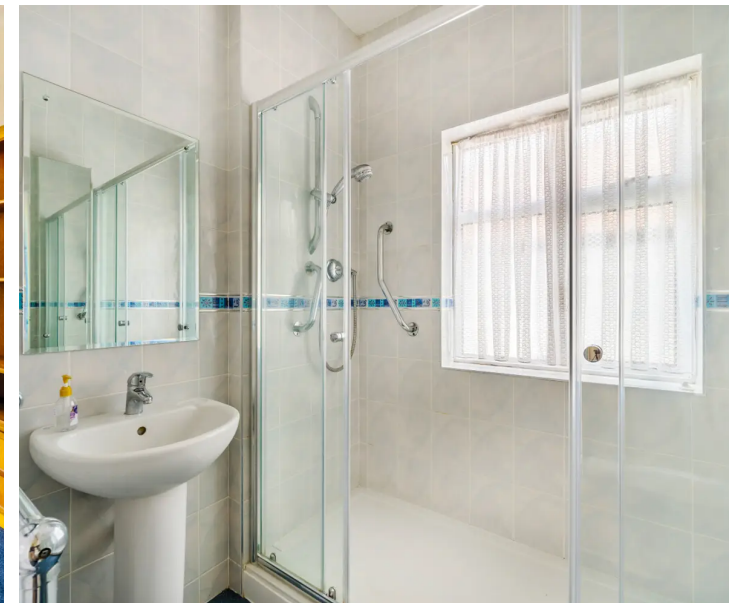
£775,000

Park Avenue West

Epsom

- Detached bungalow on a sizeable plot
- Highly sought-after location
- Potential to extend/develop (STPP)
- Close to transport links and well regarded schools
- Conservatory and utility area
- Ample off-street parking
- Beautifully landscaped garden
- Three bedrooms

Nestled in a highly sought-after location, this charming chain-free detached bungalow, sits proudly on a sizeable plot, offering a perfect blend of comfort and potential. Boasting two/three generously sized double bedrooms, this home presents an exciting opportunity for those looking to extend or develop, subject to obtaining the necessary planning permissions. The property features a utility area and a conservatory, providing versatile spaces that cater to modern living needs. Moreover, the beautifully landscaped garden envelops the home in serenity, offering a tranquil escape from the hustle and bustle of every-day life. With ample off-street parking and garage available, convenience meets elegance at this address, making it an ideal choice for discerning buyers seeking a property that effortlessly combines character and potential.





Park Avenue West

Epsom

Outside, the property continues to impress with its expansive outdoor space, thoughtfully designed to enhance the overall appeal of the home. The meticulously maintained southerly-facing garden provides a picturesque setting for al fresco dining or leisurely relaxation, ensuring every moment spent outdoors is a delight. Whether enjoying a morning coffee in the sunshine or hosting a gathering with loved ones, this outdoor oasis offers endless possibilities for creating memorable experiences. Additionally, its proximity to convenient transport links, amenities, a doctors and well-regarded schools further enhances the desirability of this property, making it a true gem in the heart of a vibrant community.

Council Tax band: E

Tenure: Freehold

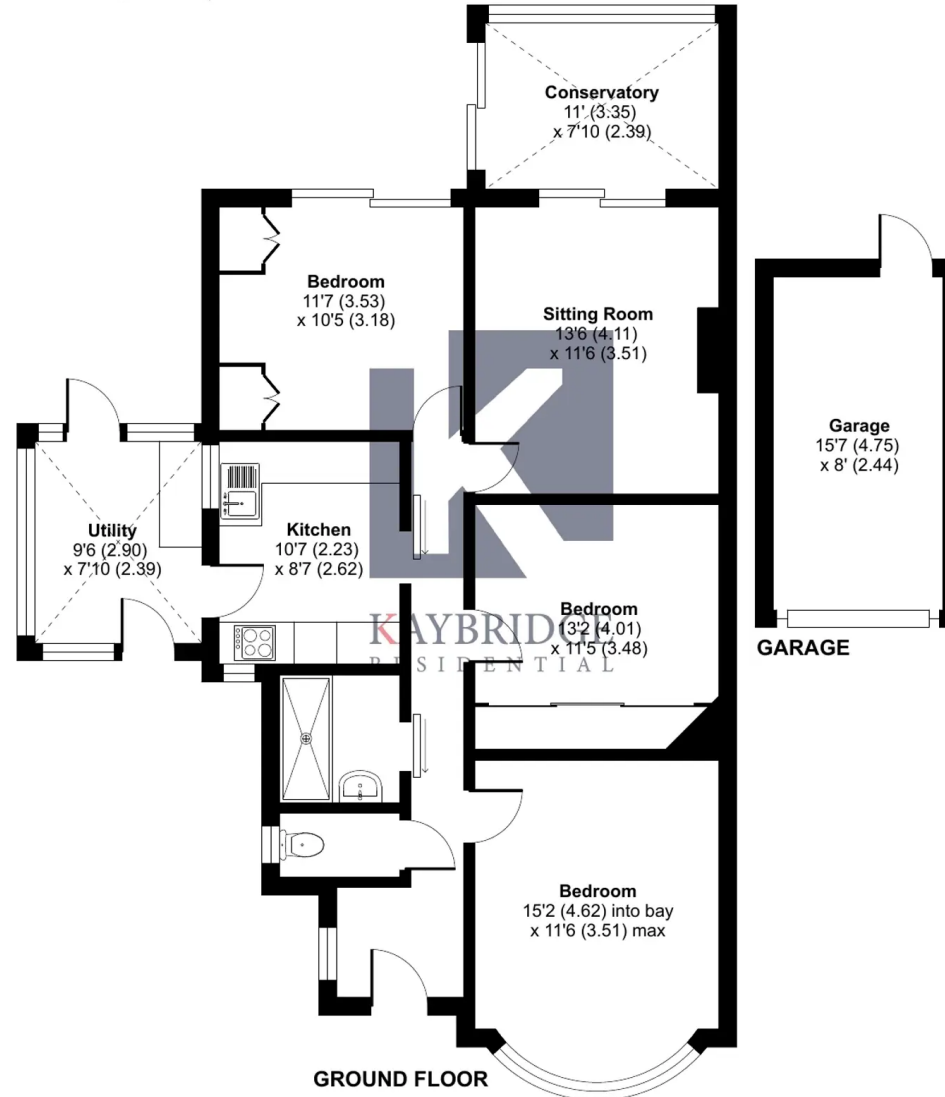
Park Avenue West, Epsom, KT17

Approximate Area = 1025 sq ft / 95.2 sq m

Garage = 125 sq ft / 11.6 sq m

Total = 1150 sq ft / 106.8 sq m

For identification only - Not to scale



Floor plan produced in accordance with RICS Property Measurement Standards incorporating International Property Measurement Standards (IPMS2 Residential). ©nlcheom 2024. Produced for Kaybridge Residential Ltd. REF: 1148598



Kaybridge Residential Epsom

Kaybridge Residential Estate Agents, 23 Stoneleigh Broadway - KT17 2JE

02080040474 • info@kbridge.co.uk • www.kaybridgeresidential.co.uk/