



Upper Holland Road  
, Sutton Coldfield, West Midlands, B72 1RD

Offers In Region Of £55,000



# Property Features

---

- Well-Situated Retirement Apartment
- Over 60's Development
- Secure Communal Entrance
- Spacious Lounge
- Matching Kitchen
- Generous Bedroom
- Three Piece Bathroom
- Communal Gardens
- Commuter Links Nearby
- Allocated Parking

## Full Description

---

Situated within a prestigious 'Over 60's' development, this wonderful retirement apartment offers a blend of accessibility, functionality, and serene living. Conveniently located close to a wealth of local shopping amenities and excellent commuter links, the complex ensures a comfortable and convenient lifestyle for its residents.

The complex is designed with security and ease of access in mind, featuring multiple points of entrance, each operated by fob-assisted and intercom access. This ensures residents' peace of mind and facilitates easy access for visitors and caregivers.

### INTERNAL

Built with versatility and community in mind, the building hosts a range of communal areas for residents to enjoy. These include a spacious lounge, perfect for socialising and relaxation, as well as purpose-built laundry and utility rooms for added convenience.

Stepping into the apartment, a timeless approach begins with an inviting entrance hall that sets the stage for the rest of the home. The spacious family lounge is a highlight, offering ample space for a range of furnishings. A characterful bay window floods the room with natural light, creating a warm and welcoming atmosphere. Adjoining the lounge, a matching kitchen with tiled surrounds ensures all catering functionality is met. The kitchen is well-appointed, providing all the essentials needed for convenient meal preparation.

The spacious double bedroom boasts comfortable proportions and includes fitted wardrobes that enhance storage facilities, ensuring ample space for personal belongings. Completing the ensemble, a well-proportioned



bathroom features a matching three-piece suite. This includes a panelled bathtub with shower fitment over, a pedestal hand wash basin, and a close-coupled WC, catering to all your needs.

#### ENTRANCE HALL

#### LOUNGE

17' 5" x 10' 6" (5.33m x 3.21m)

#### KITCHEN

7' 2" x 5' 4" (2.19m x 1.65m)

#### BEDROOM

11' 10" x 8' 9" (3.62m x 2.68m)

#### BATHROOM

6' 9" x 5' 4" (2.08m x 1.63m)

#### EXTERNAL

Externally, the complex offers a plethora of serene and tranquil communal seating areas set within a private and well-kept environment. These spaces are perfect for enjoying the outdoors, socialising with fellow residents, or simply relaxing in peace.

For added convenience, the development includes dedicated areas for mobility scooters and wheelchair storage, ensuring easy access and secure storage for residents' mobility aids.

#### ANTI MONEY LAUNDERING

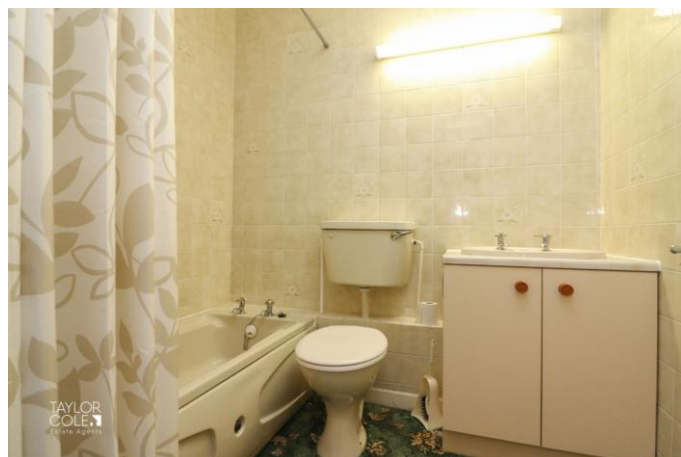
In accordance with the most recent Anti Money Laundering Legislation, buyers will be required to provide proof of identity and address to the Taylor Cole Estate Agents once an offer has been submitted and accepted (subject to contract) prior to Solicitors being instructed.

#### TENURE

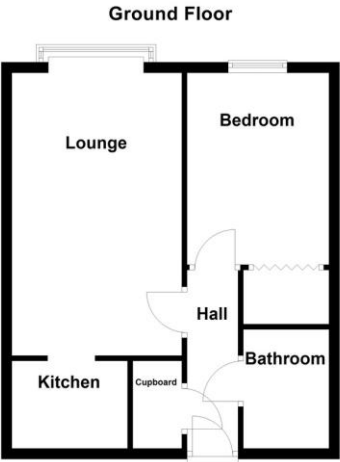
We have been advised by the current owner that the property is leasehold with an annual service charge/ground rent of £2815.26 and approximately 55 years left on the lease. Prospective buyers are advised to verify this information with their solicitor/legal representative.

#### VIEWING

By prior appointment with Taylor Cole Estate Agents on the contact number provided.







Score	Energy rating	Current	Potential
92+	A		
81-91	B		81 B
69-80	C	78 C	
55-68	D		
39-54	E		
21-38	F		
1-20	G		

8 Victoria Road  
Tamworth  
Staffordshire  
B79 7HL

www.taylorcole.co.uk  
sales@taylorcole.co.uk  
01827 311412

Agents Note: Whilst every care has been taken to prepare these sales particulars, they are for guidance purposes only. All measurements are approximate are for general guidance purposes only and whilst every care has been taken to ensure their accuracy, they should not be relied upon and potential buyers are advised to recheck the measurements