



25 Edgehill Road, Purley

£900,000 Freehold



haboodle

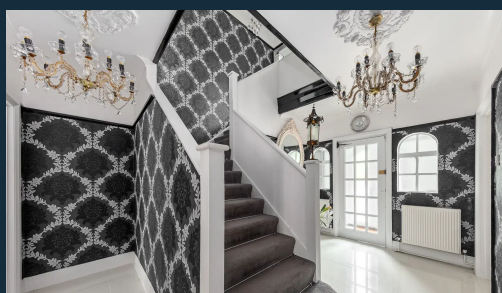
Set in a quiet private road and conveniently located, this five-bedroom detached 1930's house has been tastefully decorated and designed throughout offering a vast amount of functional space that will easily house the whole family. Purley town centre and mainline train station are within a short walking distance, providing fast and direct connections to London.

On entering, you are greeted with a useful porch, giving enough room for shoes/coats as well as a WC, The spacious entrance hall, featuring an original feature fireplace and original wooden floorboards opens out to the left, a dining room with doors leading through to the living room towards the back of the house, this allows for complete open living. There is also a spacious kitchen with an island and breakfast bar, and a pantry.

On the first floor, the accommodation comprises a spacious galleried landing, with three double bedrooms off with built-in wardrobes, a large family bathroom with double jacuzzi bath and a separate WC.

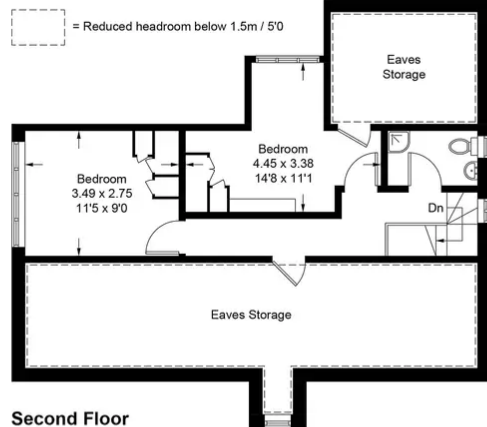


- Five Double Bedrooms
- Detached 1930's FamilyHome
- Parking For 4/5 Cars
- 2,762 sqft
- Private Road
- 100' South Facing Garden

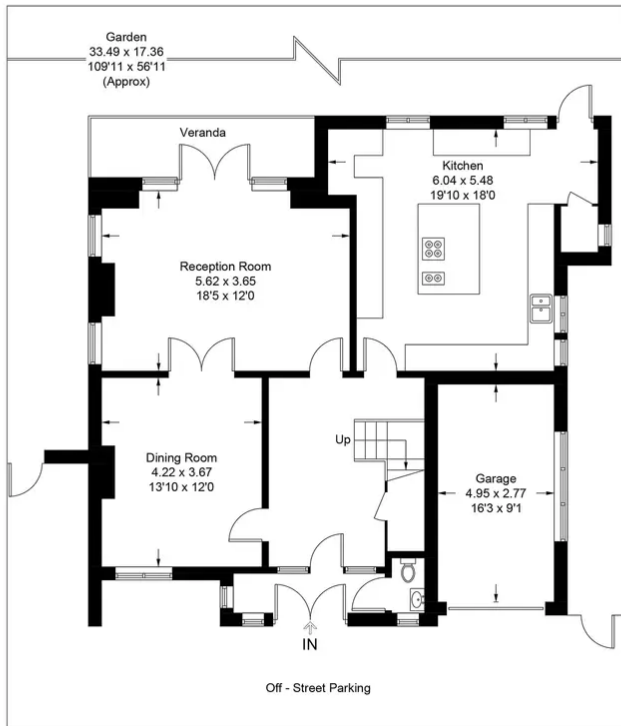


Edgehill Road

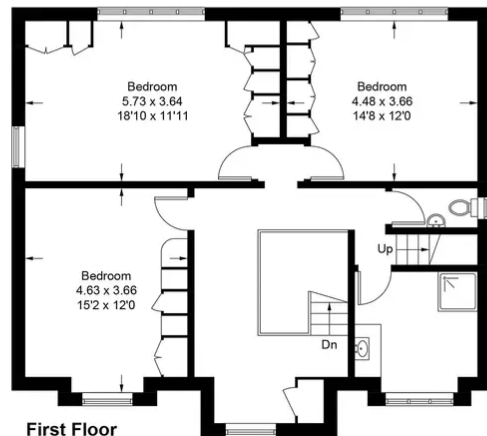
Approximate Gross Internal Area = 256.59 sq m / 2762 sq ft
(Including Eaves Storage)



Second Floor



Ground Floor



First Floor

Illustration for identification purposes only, measurements are approximate, not to scale. floorplansUsketch.com © (ID1095146)



haboodle