



12 Leigh Road, Cobham. KT11 2HU

£3,750 pcm

DAVIES
PROPERTY PARTNERS



12 Leigh Road

Cobham, KT11 2HU

A lovely three bedroom family home located on one of Cobham's most popular roads just a short distance to the town centre.

The house offers a comfortable eat in kitchen to the front of the house and bright family room the rear, overlooking the south-west facing garden and with an open fire to enjoy in the winter months. Upstairs there are two good sized double bedrooms and a family bathroom with free standing bath. The top floor primary suite has a newly installed en-suite shower room and benefits from views over the garden.

There is off-street driveway parking for two cars.

A great offering for anyone wanting to be walking distance of the high street and ideally located for popular Cobham schools such as the ACS International and Cobham Free School.

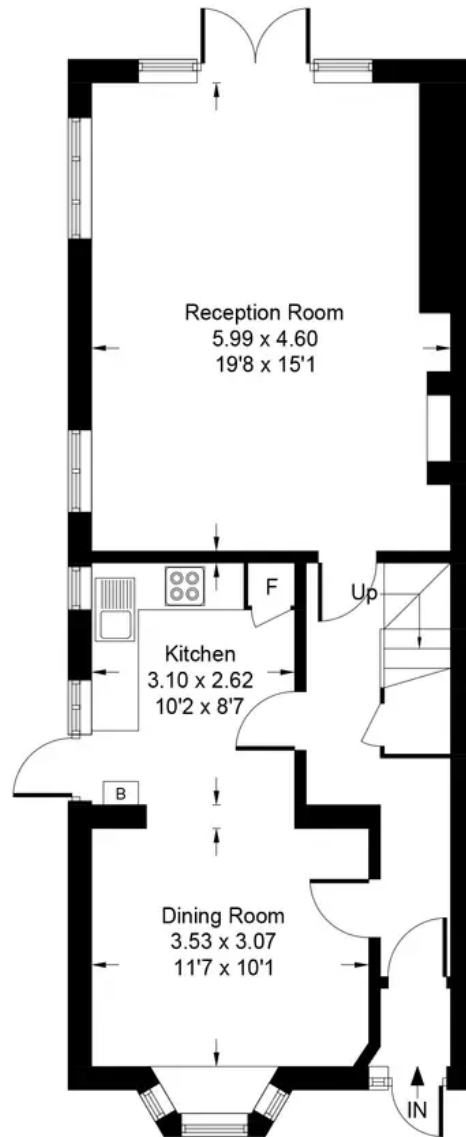
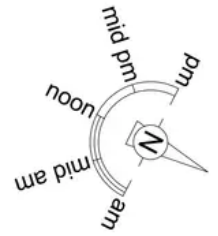
Council Tax Band: F

EPC Rating:

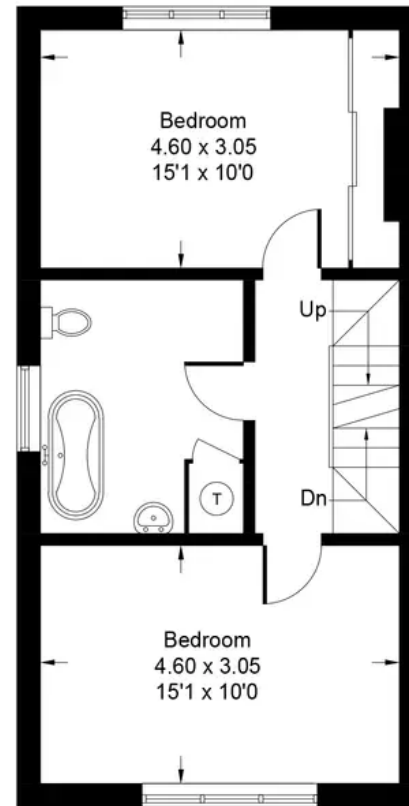


Leigh Road, Cobham, KT11

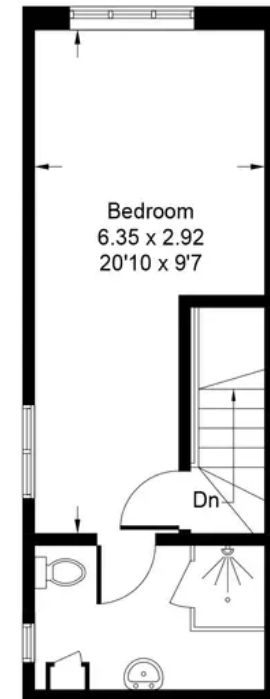
Approximate Gross Internal Area
127.3 sq m / 1370 sq ft



Ground Floor



First Floor



Second Floor

Floor plan produced in accordance with RICS Property Measurement Standards incorporating International Property Measurement Standards (IPMS2 Residential).
Produced for DAVIES PROPERTY PARTNERS by IDENTIKA LTD