



Elton, Ashfield Park Road, Ross-on-Wye, HR9 5AS

£240,000



8 Broad Street, Ross-on-Wye, Herefordshire, HR9 7EA
Tel: 01989 763553 Email: rossonwye@bidmeadcook.co.uk
www.bidmeadcook.co.uk

Elton, Ashfield Park Road

Ross-on-Wye

- First Floor Apartment
- Part of a Converted Victorian Property
- Character Features
- Edge of Town Location
- Off Road Parking
- Communal Outdoor Space
- Two Bedrooms
- Kitchen, Dining Area, Lounge, Bathroom

A two double bedroom, first floor apartment within a sympathetically converted Victorian property having period features, communal outdoor space and off road parking. Situated conveniently for the town centre in a sought after location and having a primary school, tennis centre, doctors surgeries and community hospital nearby, this property may be an ideal first time buy or retirement opportunity.

The accommodation comprises an entrance hall, lounge having bay-fronted window and feature cast-iron fireplace. Kitchen being open-plan to the dining area and having a range of base and wall units, built-in oven and windows to two aspects. There are two double bedrooms, bedroom two having built-in wardrobes and both having feature cast-iron fireplaces. The bathroom has a four piece suite with separate shower.



Elton, Ashfield Park Road

Ross-on-Wye

Outside, to the front of the property is a communal garden area, visitor's parking and two allocated parking spaces.

Agents Note: We are advised this property has a Share of the Freehold. There is a 125 year lease associated with this property commencing on 20 December 2009. The Service Charge is currently £84.51 per month and is reviewed annually, during December.

Council Tax band: C

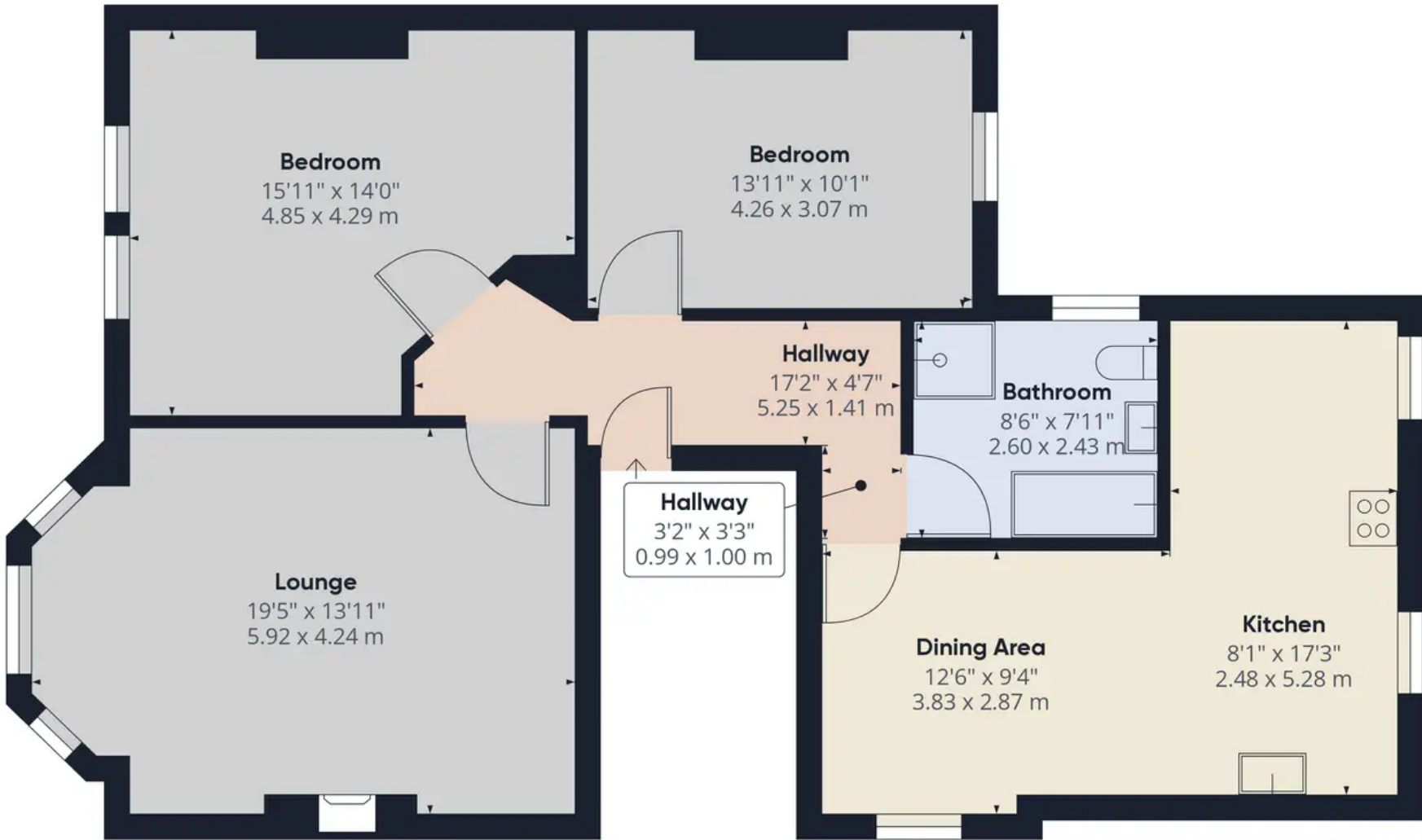
Tenure: Share of Freehold

EPC Energy Efficiency Rating: C

EPC Environmental Impact Rating: C







Approximate total area⁽¹⁾

999.09 ft²

92.82 m²

(1) Excluding balconies and terraces

While every attempt has been made to ensure accuracy, all measurements are approximate, not to scale. This floor plan is for illustrative purposes only.



No statement in these details is to be relied upon as representation of fact, and purchasers should satisfy themselves by inspection or otherwise as to the accuracy of the statements contain within. These details do not constitute any part of any offer or contract. Bidmead Cook and their employees and agents do not have any authority to give warranty or representation whatsoever in respect of this property. These details and all statements herein are provided without any responsibility on the part of Bidmead Cook or the vendors. Equipment: Bidmead Cook has not tested the equipment or central heating system mentioned in these particulars and the purchaser are advised to satisfy themselves as to the working order and condition. Measurements: Great care is taken when measuring, but measurements should not be relied upon for ordering carpets, equipment etc. The Laws of copyright protect this material. Bidmead Cook is the owner of the copyright. This property sheet forms part of our database and is protected by the database right and copyright laws. No unauthorised copying or distribution without permission.

Bidmead Cook is a trading name of trading name of BC Acquisition Ltd. Registered in England No.14967217