



# Land at The Maltings Poultry Farm

Steeple Bumpstead





## Land at The Maltings Poultry Farm

Sturmer Road, Steeple Bumpstead

A unique opportunity to purchase a 2.03-acre site with planning permission to develop an agricultural building located between Steeple Bumpstead and New England.

The plan is to convert the building into five 2-bedroom, 850 sqft single-story homes.

**22/03162/COUPA | Prior approval for the change of use of agricultural building to a dwellinghouse (Class C3), and for associated operational development - Change of use to 5 no. residential dwellings.**

The site is part of a long-established farm, previously used as a poultry farm. The building is constructed of a timber frame on a brick plinth base with timber cladding and a fibre cement sheet roof.

The proposal is to convert the barn into five small dwelling houses. Each house will have an open-plan kitchen, dining, and living area, along with two double bedrooms and a shared bathroom.

The site also has the benefit of stunning countryside rolling views to the east.

### **Agents Note:**

Tenure: Freehold

Braintree District Council

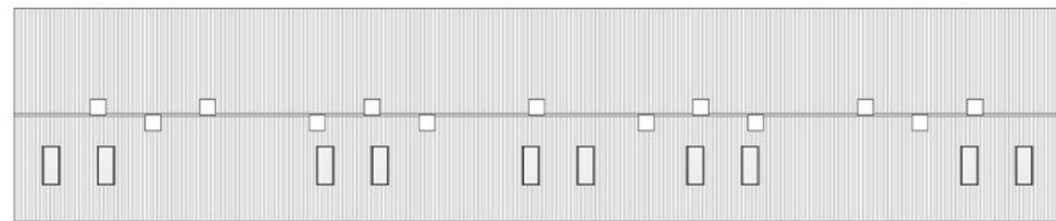
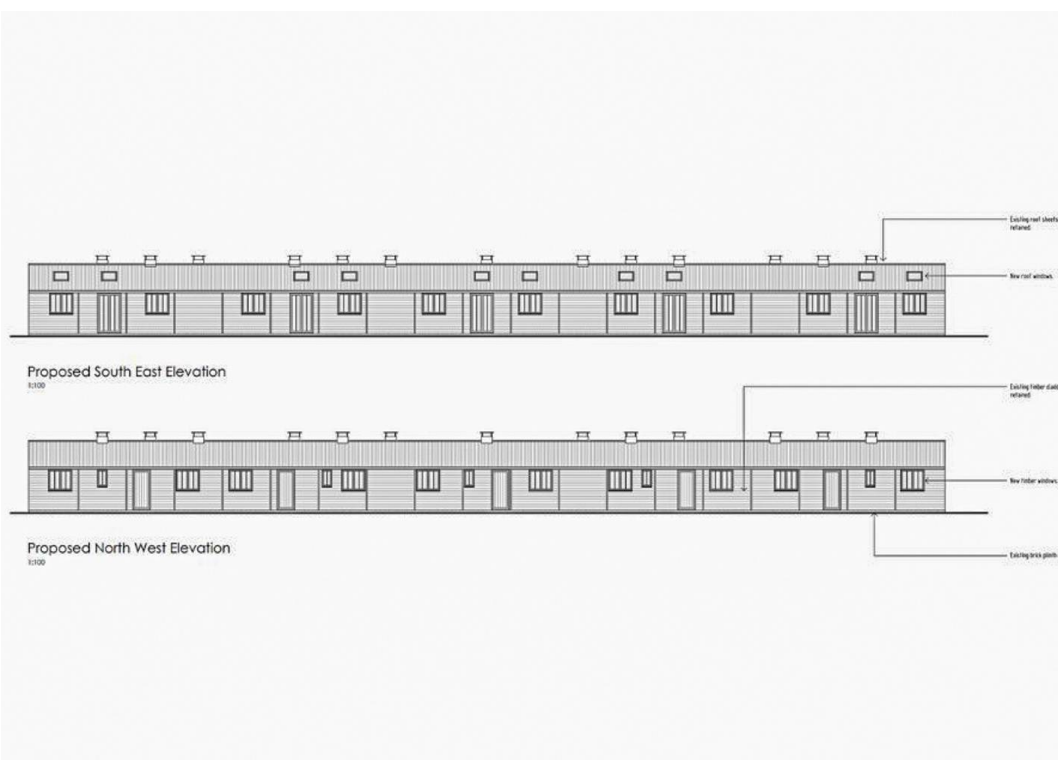
Mobile Coverage: Good Outdoor Coverage Across All Major Networks,  
Limited Indoor Coverage (Ofcom)

Broadband Coverage: Standard Available, 27 Mbps (Ofcom)

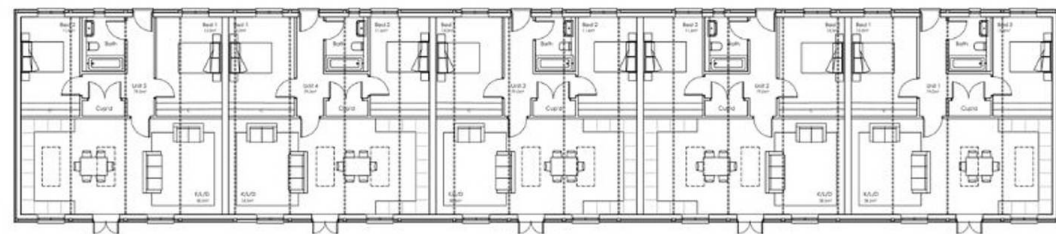
### **Location:**

Steeple Bumpstead, just 3 miles south of Haverhill in Essex, is a charming village. The village offers a welcoming community with amenities like a village hall, primary school, and a picturesque park.





Proposed Roof Plan  
1:100



Proposed Floor Plan  
1:100







## Pottrill Holland Property Agents

12 Railey Road, Saffron Walden - CB11 3EN

07751 886249 • [info@pottrillholland.co.uk](mailto:info@pottrillholland.co.uk) • <http://www.pottrillholland.co.uk>

Please note that all measurements are approximate and in metric units with imperial equivalents provided for guidance only. The fixtures, fittings, and appliances mentioned have not been tested. Internal photos are for general information only. For a free valuation, contact the numbers on the brochure.