



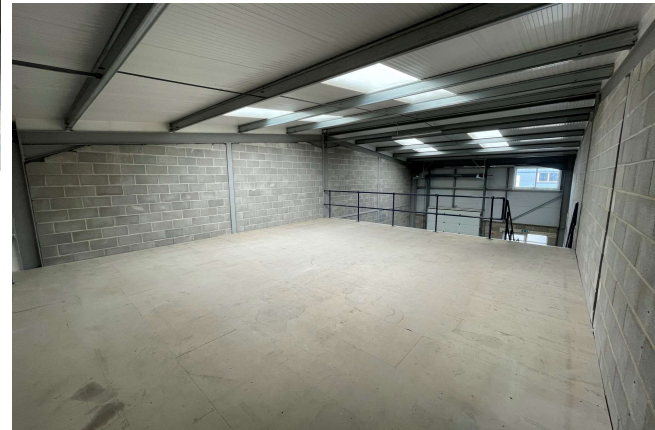
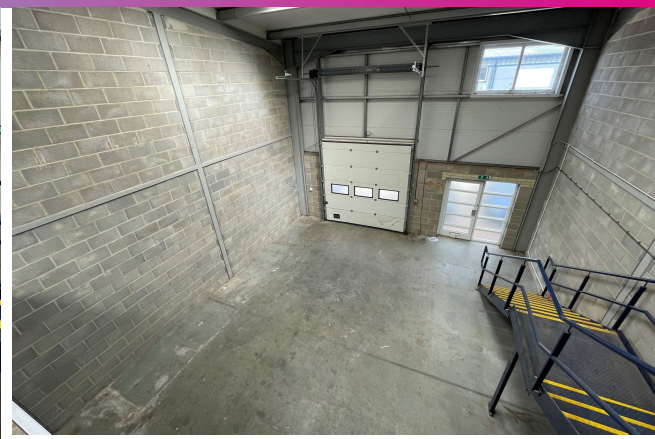
**WAREHOUSE / LIGHT
INDUSTRIAL / TRADE
COUNTER**

2,013 Sq Ft
(187 Sq M)

RENT: £22,000 Per Annum

High Spec Warehouse / Light Industrial Premises with Parking To Let

- + Situated on Popular Glenmore Business Park, Chichester
- + Just Off Main A27 Opposite Portfield Retail Park (Currys, M&S Food, Dunelm Mill & John Lewis)
- + Suit Variety of Commercial Uses (stpc)
- + Ground Floor Warehouse with First Floor Office / Storage
- + Presented in Excellent Condition Ready For Immediate Tenant Fit Out
- + New Lease Terms Available



Generic Image used to show standard Glenmore Business Park unit. Interested parties are asked to visually inspect the relevant unit prior to making an offer

Location

The Cathedral city of Chichester is located approximately 65 miles southwest of London, 15 miles east of Portsmouth and 30 miles west of the city of Brighton. The city has excellent road communications being situated on the A27 which runs east to Worthing & Brighton and west to Portsmouth and Southampton where it connects with the M27 and M3 motorways. Glenmore Business Park was constructed in 2016 and is a commercial development over 10.34 acres situated on the A27 adjacent to the Portfield Retail Park which is home to national occupiers such as John Lewis, M&S, Homesense, Halfords and Dunelm Mill.

Description

Unit M60 is an excellent, high quality industrial / warehouse unit benefitting from brick elevations and micro rib cladding. The unit provides ground floor warehouse accommodation with further storage or office space available on the first floor mezzanine level.

Specification

- 6 Metres internal eaves height
- 15kn/per sq floor loading
- 2 parking spaces plus loading bay
- Separate Pedestrian door
- Powder coated screeded floor
- Roof Cladding

Accommodation

Floor / Name	SQ FT	SQM
Ground Floor Warehouse	1,341	124
Frist Floor Mezzanine	672	63
Total	2,013	187

Terms

The property is available by way of a new effective FR&I Lease for a terms to be negotiated and agreed.

Business Rates

According to the VOA (Valuation Office Agency) the unit has a rateable value of £17,000. Interested parties are asked to verify this information with Chichester District Council prior to any viewing.

Estate Service Charge & Buildings Insurance

The unit is liable for an estate service charge in the region of £853.80 + VAT per annum. This includes landscaping, communal signage, general repairs and maintenance, refuse and clearance, common parts utilities, common parts insurance, sinking fund, accountancy and management fees.

The buildings insurance is circa £517.18 per annum. Further details available upon request.

Summary

- + **Rent** - £22,000 Per Annum Exclusive
- + **VAT** - To Be Charged on the Rent
- + **Legal Fees** - Each Party To Pay Their Own Fees
- + **EPC** - B(44)

Viewing & Further Information

Jon Justice

01903 251 600 / 07398 163 431
jon@justiceandco.co.uk

Sarah Justice

01903 251 600 / 07852 137 309
sarah@justiceandco.co.uk

307 Goring Road, Worthing, BN12 4NX
www.justiceandco.co.uk