



2 Broadgate Hall, Windermere
£620,000





2 Broadgate Hall

Windermere, Windermere

A beautifully located Lakeland stone barn conversion situated near Ings within the Lake District National Park. The property enjoys a glorious pastoral setting with views over beautiful countryside and the high fells towards Kentmere with access to an extensive choice of local or more distant routes on foot or bicycle. The property enjoys easy access to local amenities in Ings and Windermere, including bus and train connections, as well as ready access to the market town of Kendal and the M6 Motorway.

The well-presented accommodation comprises an open plan living area comprising lounge with a feature fireplace, well-appointed kitchen including breakfast bar and a separate utility room and cloakroom. Also on the ground floor are an entrance hall, bedroom, study/further bedroom and bathroom that can also function as a separate annex for a family member. The first floor offers two double bedrooms both with storage and great views complemented by a family bathroom and access to a large part-boarded loft.

The spacious outdoors setting offers a generous and flexible outdoor living/seating area with views out across the fields with a lawn to the front with established trees complemented by another more formal lawn to the side of the property. Ample driveway parking is available as well.

PLEASE NOTE - the property is subject to a local occupancy clause, further information is available upon request from our Windermere office.

- Barn conversion
- Open plan kitchen
- Gardens to front and sides
- Two bathrooms and a cloakroom
- Ample driveway parking
- Desirable location
- Local occupancy conditions apply

From Ings to Windermere take the left onto Moorhowe Road, follow the road up the hill where 2 Broadgate Hall is located on the left.

WHAT3WORDS:necklace.replaces.senior.

Council Tax band: E

Tenure: Freehold

EPC Energy Efficiency Rating: E

IDENTIFICATION CHECKS

Should a purchaser(s) have an offer accepted on a property marketed by THW Estate Agents they will need to undertake an identification check. This is done to meet our obligation under Anti Money Laundering Regulations (AML) and is a legal requirement. We use a specialist third party service to verify your identity. The cost of these checks is £43.20 inc. VAT per buyer, which is paid in advance, when an offer is agreed and prior to a sales memorandum being issued. This charge is non-refundable.





GROUND FLOOR

ENTRANCE HALL

16' 4" x 6' 10" (4.98m x 2.09m)

Both max. Double glazed door, double glazed window, electric radiator, stone features, exposed beams, wood flooring, wall and spotlighting.

OPEN PLAN LIVING AREA

26' 8" x 25' 4" (8.14m x 7.71m)

Both max. Double glazed door, three double glazed windows, two radiators, bespoke Oak kitchen with good range of base and wall units, sink, integrated double oven and microwave, 7 piece gas hob, extractor/filter over, integrated appliances including fridge, dishwasher, tiled splashbacks, recessed LED spotlights, stone flooring, gas stove to feature fireplace.

BEDROOM

14' 7" x 14' 0" (4.45m x 4.26m)

Both max. Two double glazed timber windows, electric radiator, stone features, exposed beams, wood flooring and built in cupboards.

STUDY

7' 11" x 7' 9" (2.41m x 2.35m)

Both max. Two double glazed windows, electric radiator, exposed beams, wood flooring, telephone point.

BATHROOM

8' 4" x 6' 1" (2.54m x 1.85m)

Both max. Double glazed window, heated towel radiator, three piece suite comprises W.C. wash hand basin to vanity and bath with thermostatic shower fitment over, partial tiling to walls, recessed spot lights, shaver points, non-slip tiled flooring.

CLOAKROOM

4' 11" x 3' 10" (1.51m x 1.17m)

Both max. W.C. wash hand basin, recessed spotlights, extractor fan, stone flooring.

UTILITY ROOM

15' 5" x 13' 3" (4.71m x 4.05m)

Both max. Double glazed door, radiator, base and wall units, hot water cylinder, hot water boiler, stone flooring

FIRST FLOOR



GROUND FLOOR

ENTRANCE HALL

16' 4" x 6' 10" (4.98m x 2.09m)

Both max. Double glazed door, double glazed window, electric radiator, stone features, exposed beams, wood flooring, wall and spotlighting.

OPEN PLAN LIVING AREA

26' 8" x 25' 4" (8.14m x 7.71m)

Both max. Double glazed door, three double glazed windows, two radiators, bespoke Oak kitchen with good range of base and wall units, sink, integrated double oven and microwave, 7 piece gas hob, extractor/filter over, integrated appliances including fridge, dishwasher, tiled splashbacks, recessed LED spotlights, stone flooring, gas stove to feature fireplace.

BEDROOM

14' 7" x 14' 0" (4.45m x 4.26m)

Both max. Two double glazed timber windows, electric radiator, stone features, exposed beams, wood flooring and built in cupboards.

STUDY

7' 11" x 7' 9" (2.41m x 2.35m)

Both max. Two double glazed windows, electric radiator, exposed beams, wood flooring, telephone point.

BATHROOM

8' 4" x 6' 1" (2.54m x 1.85m)

Both max. Double glazed window, heated towel radiator, three piece suite comprises W.C. wash hand basin to vanity and bath with thermostatic shower fitment over, partial tiling to walls, recessed spot lights, shaver points, non-slip tiled flooring.

CLOAKROOM

4' 11" x 3' 10" (1.51m x 1.17m)

Both max. W.C. wash hand basin, recessed spotlights, extractor fan, stone flooring.

UTILITY ROOM

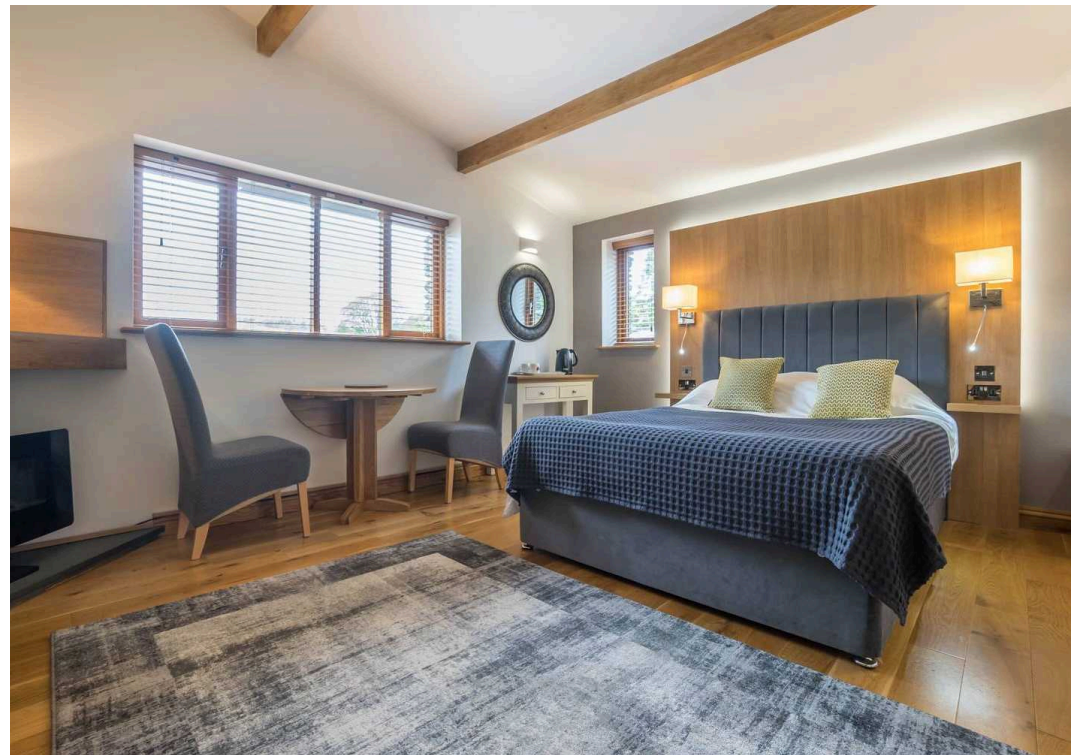
15' 5" x 13' 3" (4.71m x 4.05m)

Both max. Double glazed door, radiator, base and wall units, hot water cylinder, hot water boiler, stone flooring

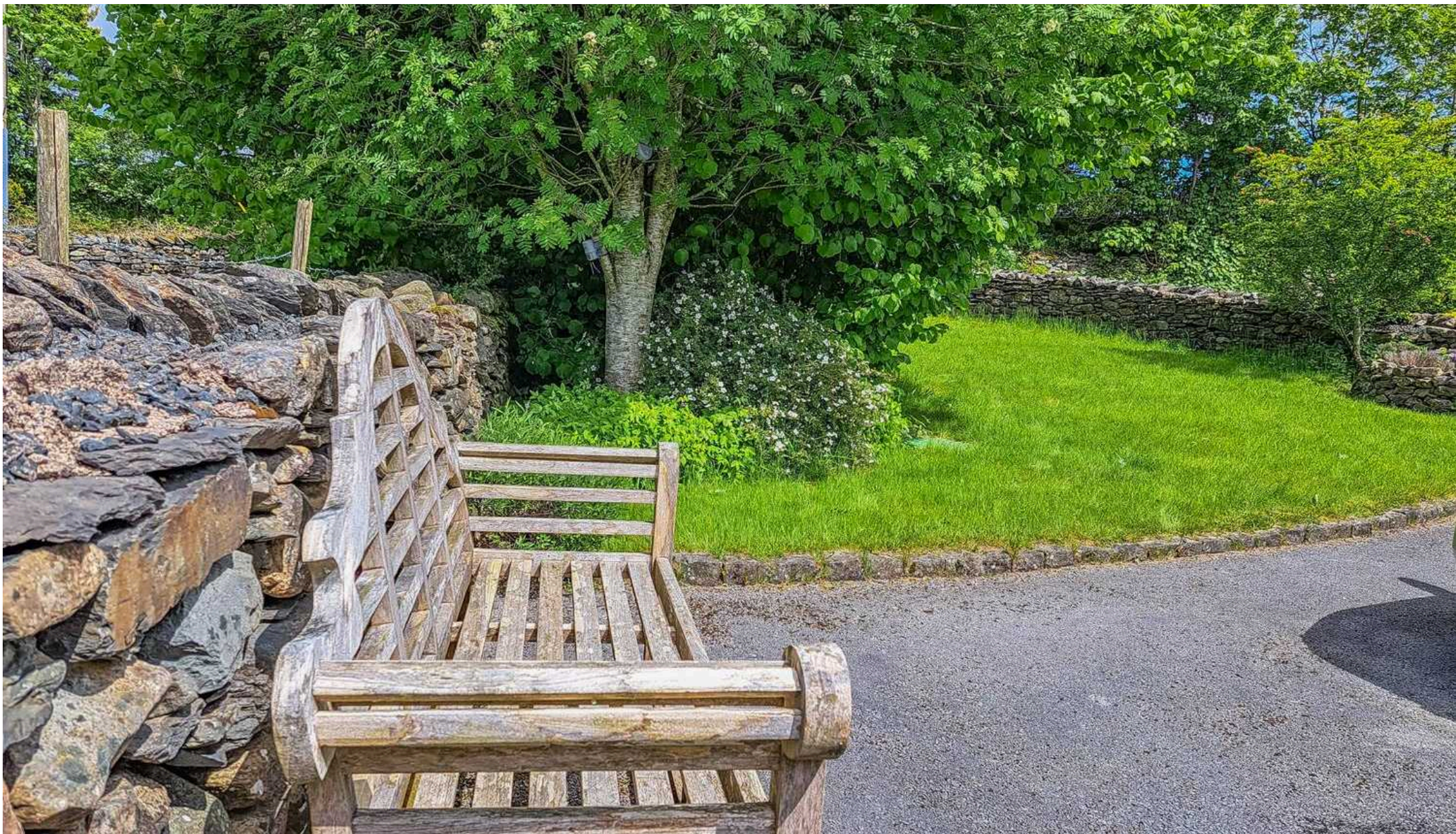
FIRST FLOOR

BEDROOM









THW Estate Agents

25b Crescent Road, Windermere - LA23 1BJ

015394 47825 • windermere@thwestateagents.co.uk • www.thwestateagents.co.uk

Please note that descriptions, photographs and plans are for guidance only. Services and appliances have not been tested, measurements are approximate and alterations may not have necessary consents. Contact us for property availability and important details before travelling or viewing properties. THW Estate Agents Ltd is a separate legal entity to the solicitor firm of THW Legal Ltd which has different ownership and clients of THW Estate Agents Ltd do not have the same protection as those of THW Legal Ltd.