



Flat 15, Jesson Court
Jesson Road, Walsall WS1 3AZ

Offers in the Region of
£134,950



Offers in the Region of £134,950

Flat 15, Jesson Court

Jesson Road

Walsall

WS1 3AZ

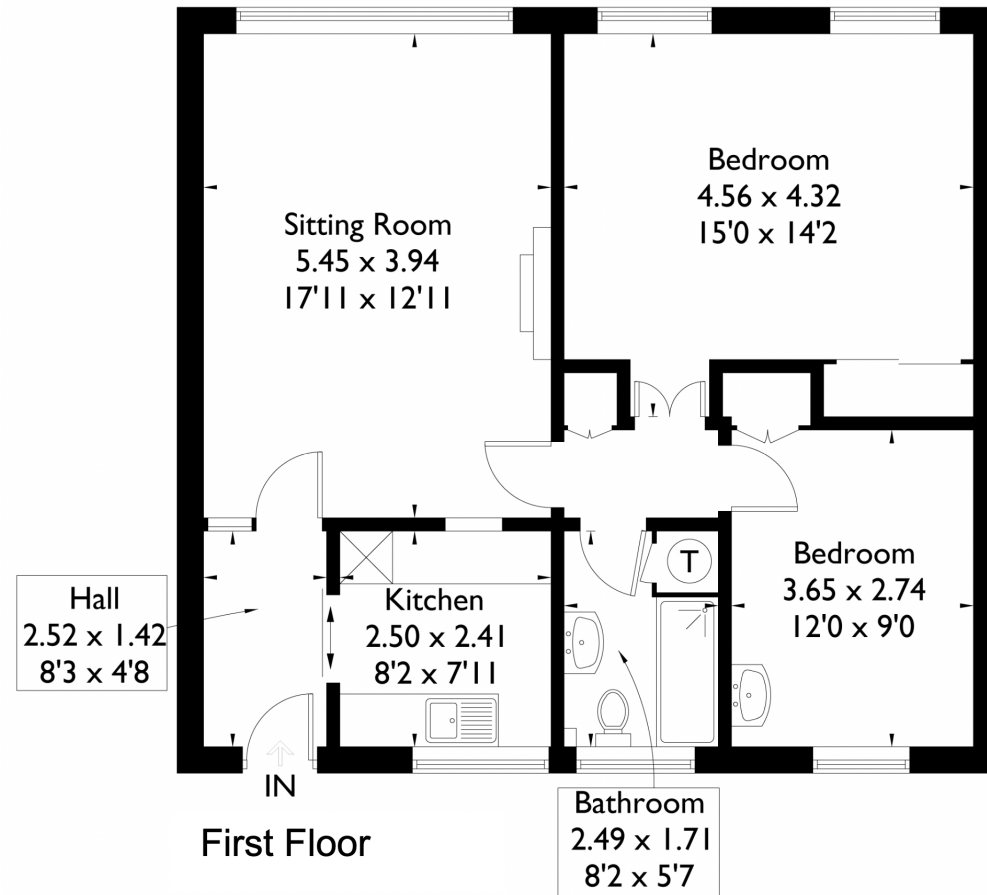
EPC Rating 'Band C'

Council Tax 'Band C'



Agents Note: Whilst every care has been taken to prepare these sales particulars, they are for guidance purposes only. All measurements are approximate and the photos are for general guidance purposes only and whilst every care has been taken to ensure their accuracy, they should not be relied upon and potential buyers are advised to recheck the measurements and the current condition of the internal and external parts of the property.

Flat 15, Jesson Court, Jesson Road, Walsall WS1 3AZ



Head Office

35 Lombard Street, Lichfield
Staffordshire WS13 6DP

Contact Us

www.wadsworthco.com
sales@wadsworthandco.com
01543 212456

Opening Hours

Mon-Fri: 8.30am - 6pm
Sat-Sun: 10am - 2.30pm