

TO LET



Victoria Road, Mexborough  
£650 pcm

  
MARTIN & CO



## Victoria Road, Mexborough

Terrace Property,  
2 bedroom, 1 bathroom

£650 pcm

Date available: Available Now

Deposit: £750

Unfurnished

Council Tax band: A

- Recently refurbished
- 2 bedrooms
- Off Road Parking
- Great Location
- Well Presented Throughout
- Central Heating
- 

A spacious two bedroomed terrace available for rent in popular area of Mexborough.

Located in the popular Town of Mexborough, this bay fronted, recently refurbished property offers a lounge, kitchen and 2 bedrooms and bathroom. Convenient on-street parking is available, providing easy access to your new home.

Enjoy the convenience of Mexborough Town living, with easy access to local amenities and the perks of a well-



connected neighbourhood.

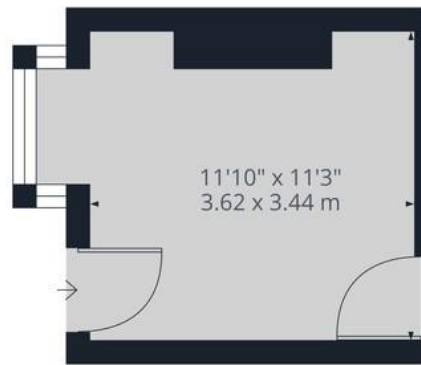
Benefit from excellent public transport links and commuter routes, simplifying your daily travels.

Register your interest now!

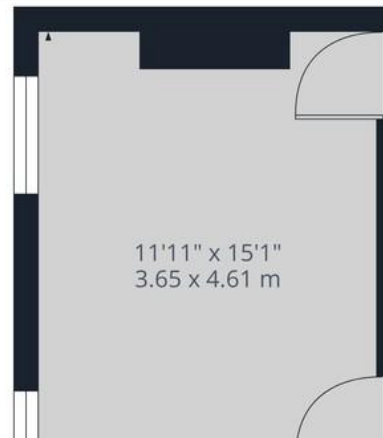


%epcGraph\_c\_1\_322%





Ground Floor



Approximate total area<sup>(1)</sup>  
 600.1 ft<sup>2</sup>  
 55.75 m<sup>2</sup>

(1) Excluding balconies and terraces

While every attempt has been made to

## Martin & Co Rotherham

5 Worry Goose Lane • Whiston • Rotherham • S60 4AA  
 T: 01709 544982 • E: rotherham@martinco.com

# 01709 544982

<http://www.martinco.com>



**Accuracy:** References to the Tenure of a Property are based on information supplied by the Seller. The Agent has not had sight of the title documents. A Buyer is advised to obtain verification from their Solicitor. Items shown in photographs including but not limited to carpets, fixtures and fittings are not included unless specifically mentioned within the sales particulars. They may however be available by separate negotiation. Buyers must check the availability of any property and make an appointment to view before embarking on any journey to see a property. No person in the employment of the agent has any authority to make any representation about the property, and accordingly any information given is entirely without responsibility on the part of the agents, sellers(s) or lessors(s). Any property particulars are not an offer or contract, nor form part of one. **Sonic / Laser Tape:** Measurements taken using a sonic / laser tape measure may be subject to a small margin of error. **All Measurements:** All Measurements are Approximate. **Services Not tested:** The Agent has not tested any apparatus, equipment, fixtures and fittings or services and so cannot verify that they are in working order or fit for the purpose. A Buyer is advised to obtain verification from their Solicitor or Surveyor.

