

Paul Bott & Co



- Period Conversion
- Two Bedrooms
- Large Living Room
- Completely Refurbished

Flat 6, 4 Sussex Square, Brighton, East Sussex, BN2 1FJ

Offers In Excess Of £575,000

OFFERS IN EXCESS OF £575,000 An excellent opportunity to purchase this stunning, period, ground floor converted apartment. With a stunning finish throughout, this two double bedroom apartment comes with a fully fitted kitchen and large spacious living room. With high ceilings, original cornices, parquet flooring as well as use of the private residents gardens, this is an absolute must see property, located in the heart of the ever sought after Sussex Square.



Property Description

Situated on the ground floor, a grand entrance/hallway Leads through into the main apartment.

At the front of the property with two large original sash windows with shutters is the living room, light and spacious throughout with feature fireplace & marble surround, mirror wall feature and parquet flooring underfoot. This room certainly has the wow factor with glorious views over the gardens.

Bedroom one at the front of the property with a feature stain glass windows, high ceilings and original cornices and wall details and finished off with stunning parquet flooring.

Back through the hallway is bedroom two at the back of the property with built in storage, high ceilings, large sash window for light and parquet flooring underfoot.

Through the spacious hallway is the kitchen. Newly refurbished with a contemporary yet stylish finish. Cream gloss units which are plentiful, fully fitted appliances including a dishwasher and washing machine, light floods the space with huge windows yet partly frosted for privacy.

Finally stairs lead up to the bathroom which has been completely refurbished with a white suite and chrome fittings and storage added for ease.

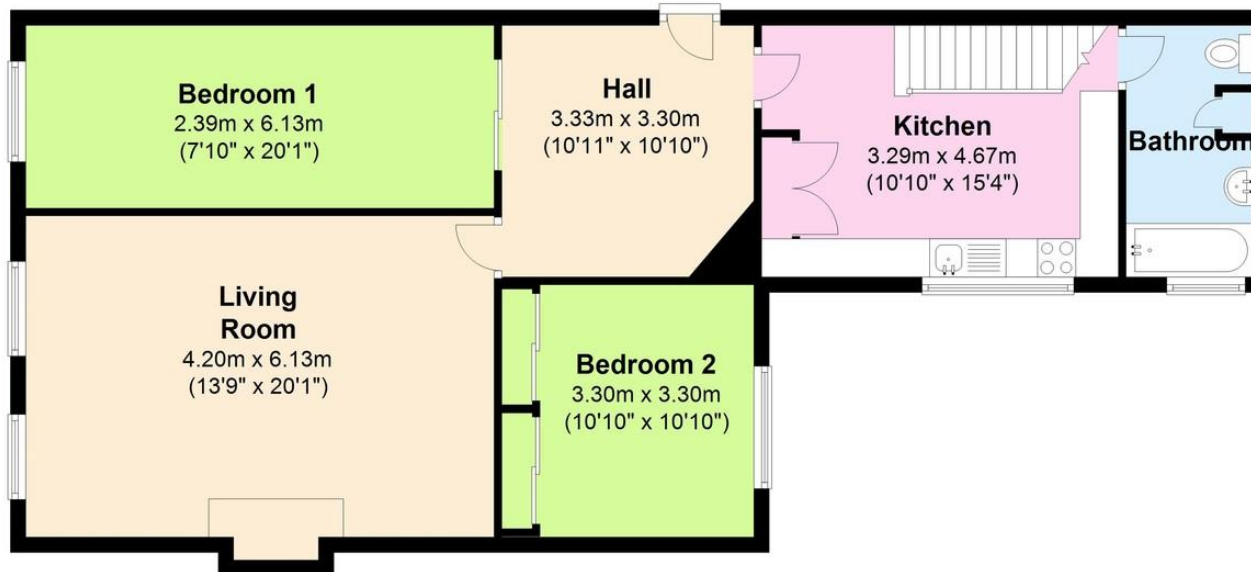
The apartment holds style and grace yet an added contemporary twist and is certainly spacious and light. Ideally placed for the seafront, The Royal Sussex Hospital, Kemp Town Village and Brighton City Centre. A rare find in todays market.





Floor Plan

Approx. 85.4 sq. metres (918.8 sq. feet)



%epcGraph_c_1_334%

Total area: approx. 85.4 sq. metres (918.8 sq. feet)

29 Upper St James Street,
Brighton, East Sussex, BN2 1JN

www.paulbottandcompany.co.uk
01273 605530
info@paulbottandcompany.co.uk

Agents Note: Whilst every care has been taken to prepare these sales particulars, they are for guidance purposes only. All measurements are approximate and for general guidance purposes only and whilst every care has been taken to ensure their accuracy, they should not be relied upon and potential buyers are advised to recheck the measurements.