

THE CHADDOCK WATERSIDE POINT

3 | 

1 | 

1 | 



Artist's impression

KEY FEATURES:

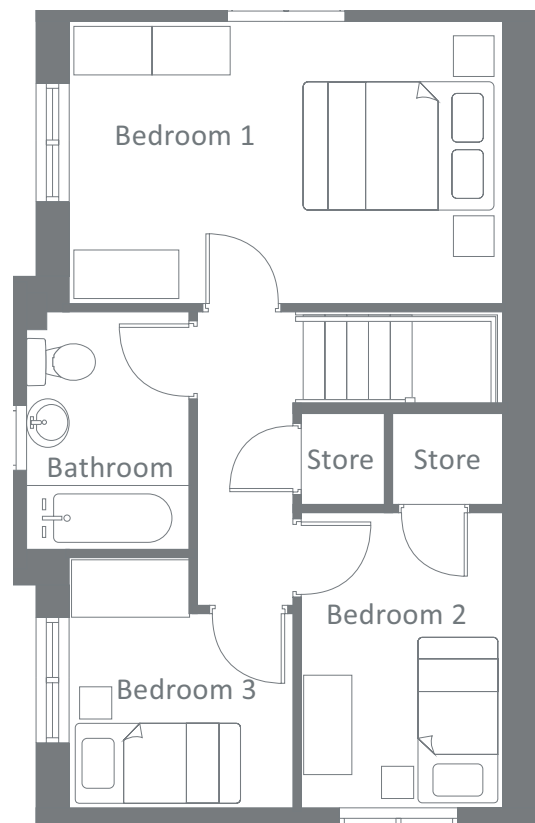
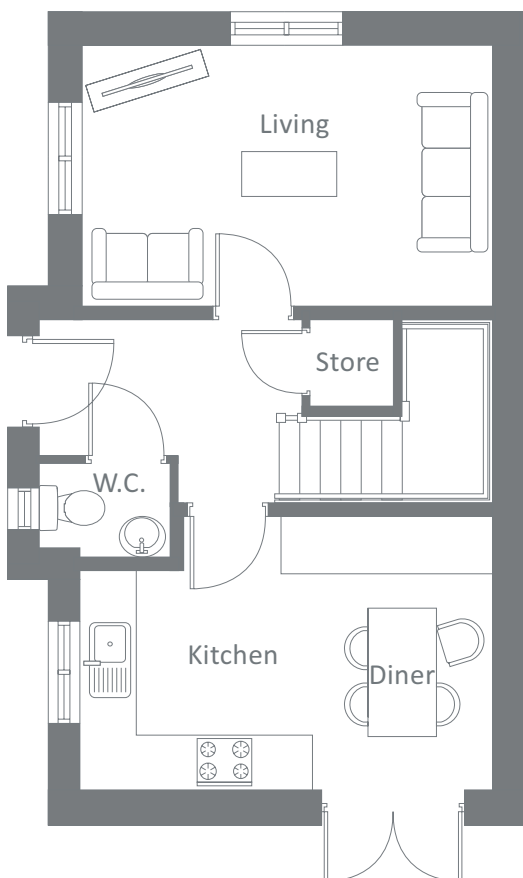
- One double & two single bedrooms
- Open-plan kitchen / diner
- Separate lounge
- Patio doors to garden

WATERSIDE POINT, WEST BRIDGEWATER STREET, LEIGH, WN7 4HB
An exciting new canal-side development of 226 attractive new homes.

Waterside Point

Plots 3, 28, 31, 34, 37, 38, 42, 45, 48, 50, 51, 53, 56, 62, 64, 65, 66, 67, 69, 81, 83, 84, 87, 88, 93, 107, 123, 137, 143, 151, 157, 220, 223, 226

THE CHADDOCK WATERSIDE POINT



Ground Floor

	Metric	Imperial
Kitchen / Diner	3.0 x 4.5	9'4" x 14'7"
Living	4.5 x 2.9	14'7" x 9'8"
W.C.	1.4 x 1.0	4'5" x 3'2"

First Floor


	Metric	Imperial
Bedroom 1	4.5 x 2.9	14'7" x 9'5"
Bedroom 2	2.1 x 3.1	6'11" x 10'3"
Bedroom 3	2.3 x 2.6	7'5" x 8'5"
Bathroom	1.7 x 2.5	5'5" x 8'4"


CONTACT OUR TEAM

 01942 419148

 yourhousinggroup.co.uk

 @yourhousinggroup

 @Your_Housing

 @yourhousing