

The Chaddock Waterside Point



3



1



1



KEY FEATURES:

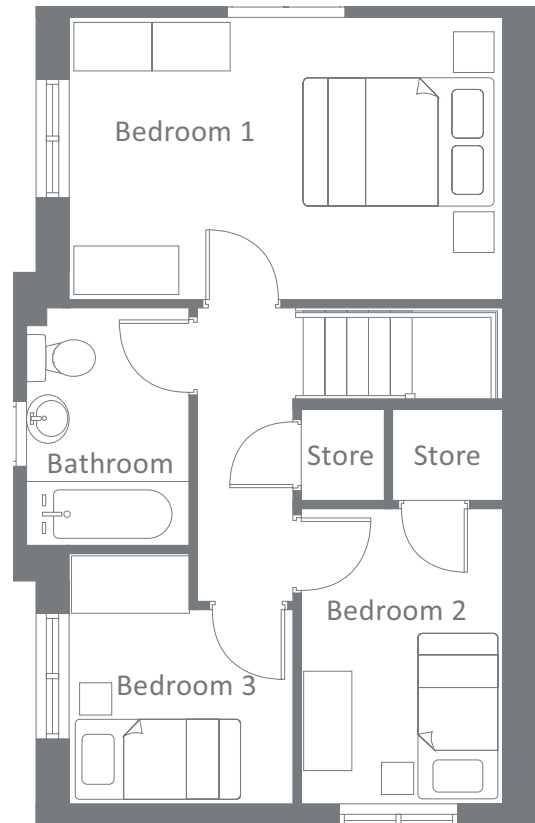
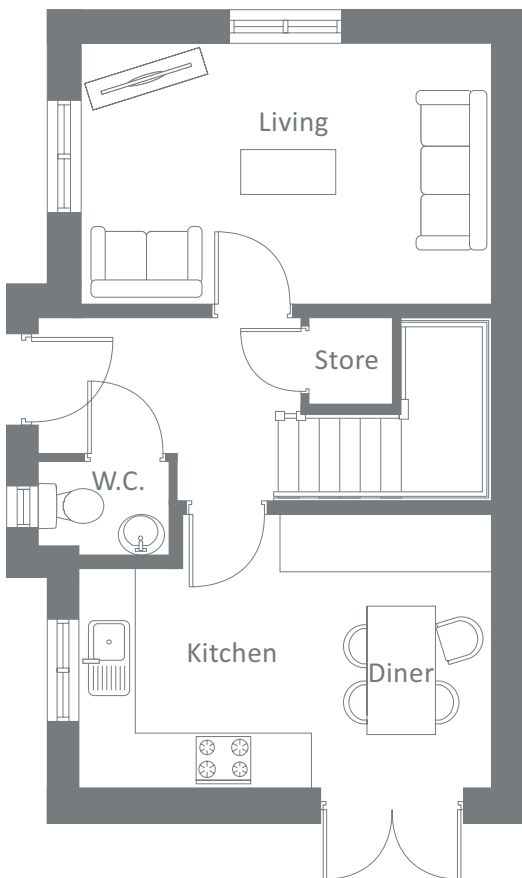
- One double & two single bedrooms
- Open-plan kitchen / diner
- Separate lounge
- Patio doors to garden
- Electrical vehicle charging point
- Solar panels fitted to roof



The Chaddock
Plot
228

Waterside Point, West Bridgewater St, Leigh, WN7 4HB
An exciting canal-side development of 226 attractive new homes.

The Chaddock Waterside Point



Ground Floor	Metric	Imperial
Kitchen / Diner	3.0 x 4.5	9'4" x 14'7"
Living	4.5 x 2.9	14'7" x 9'8"
W.C.	1.4 x 1.0	4'5" x 3'2"

First Floor	Metric	Imperial
Bedroom 1	4.5 x 2.9	14'7" x 9'5"
Bedroom 2	2.1 x 3.1	6'11" x 10'3"
Bedroom 3	2.3 x 2.6	7'5" x 8'5"
Bathroom	1.7 x 2.5	5'5" x 8'4"

Contact our team

☎ 01942 419148

🌐 yourhousinggroup.co.uk

📷 @yourhousinggroup

✉ @Your_Housing

📘 @yourhousing