



Trinity Street, Plymouth, PL1 3FT

£250,000 LEASEHOLD EPC: B





Trinity Street

Plymouth, PL1 3FT

Luxurious 2-bed apartment in Millbay Marina. Open-plan living, high-end kitchen, 2 double bedrooms, en-suite, balcony with marina views, gated parking. Ideal for stylish living and entertaining.

Council Tax band: C

Tenure: Leasehold

1 Parking Space

- Two Double Bedroom First Floor Apartment
- Open Plan Living
- Fully Integrated Kitchen
- Built-in Bedroom Wardrobes
- Master En-suite
- South Facing Balcony
- Views of Millbay Marina
- Securely Gated Parking Space



Trinity Street

PLYMOUTH, PL1 3FT

Exceptional two-bedroom first-floor apartment, located in the heart of the redeveloped Millbay Marina. Elegance and sophistication greet you as you enter this residence boasting a seamless open plan living area, perfect for entertaining guests or relaxing in style. The fully integrated kitchen features top-of-the-line appliances, ideal for culinary delights. Retreat to the two spacious double bedrooms, each offering built-in wardrobes for ample storage, with the master bedroom benefiting from a sleek en-suite bathroom. Step outside onto the south-facing balcony and soak in the views of the picturesque Millbay Marina, a perfect spot to unwind and enjoy the beauty of the surroundings. This exquisite property also includes a securely gated parking space, ensuring convenience and peace of mind for residents.

Leasehold Information

Tenure: Leasehold

Lease Length: 250 years from 22/12/2006

Service Charge: £1811.06 per annum

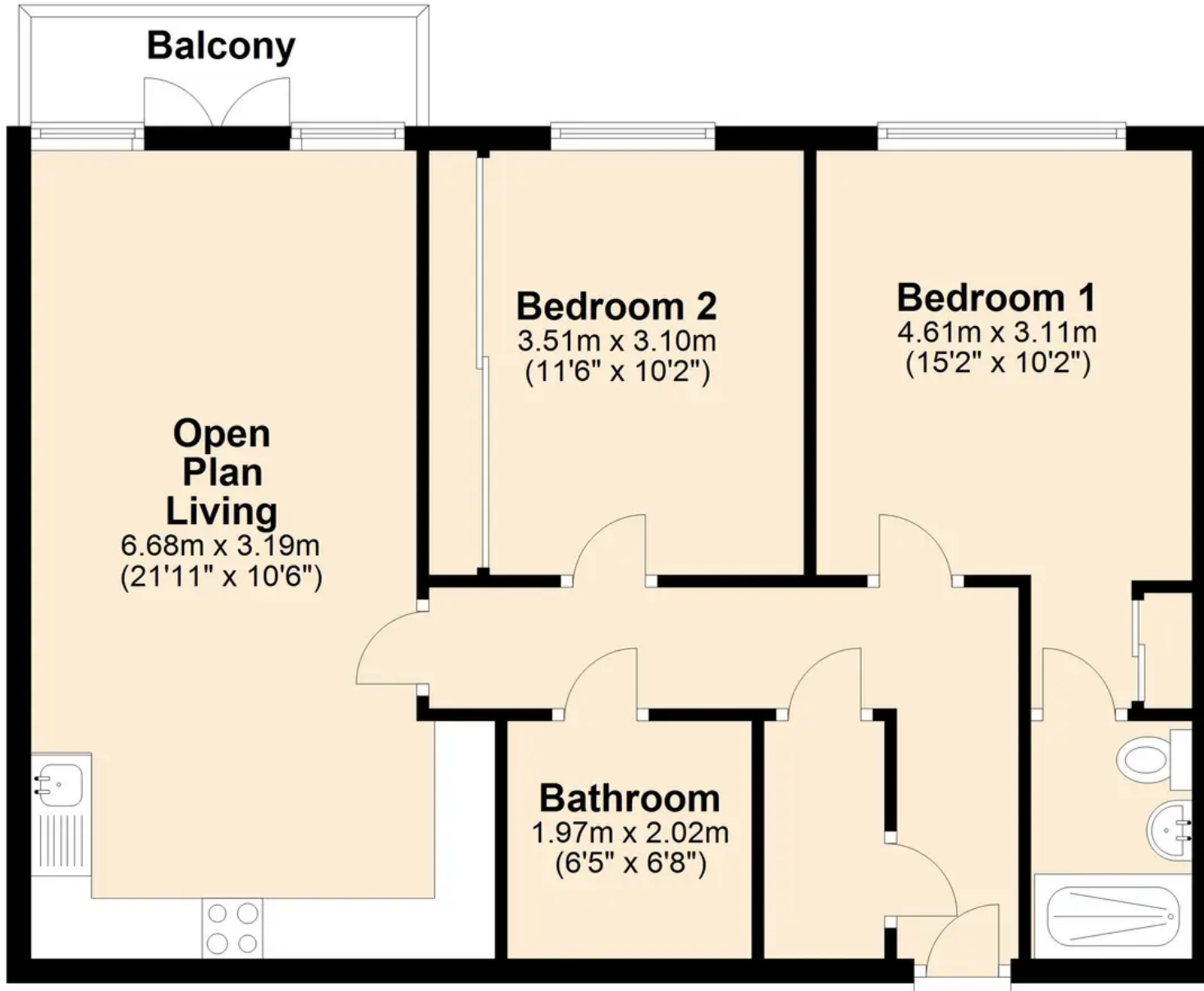
Ground Rent: £250 per annum

Council Tax Band: C

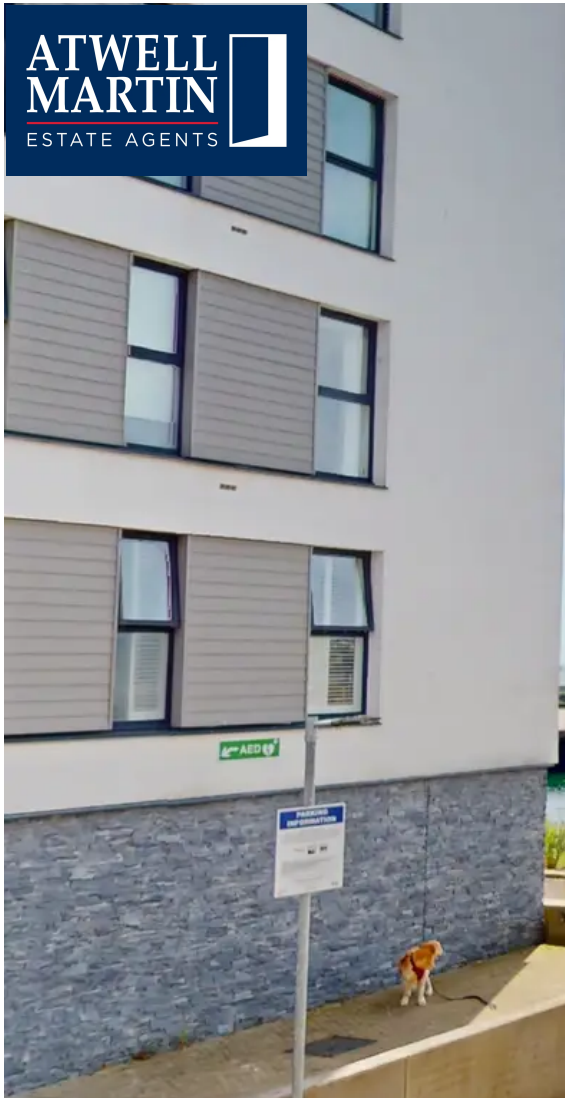


First Floor

Approx. 64.1 sq. metres (689.8 sq. feet)



Total area: approx. 64.1 sq. metres (689.8 sq. feet)



**ATWELL
MARTIN**
ESTATE AGENTS



Atwell Martin

Atwell Martin, 65 Southside Street – PL1 2LA

01752 202121

plymouthsales@atwell-martin.co.uk

plymouth.atwellmartin.co.uk/

Atwell Martin Plymouth endeavour to ensure the accuracy of property details produced and displayed. Please note that we have not tested any apparatus, equipment, fixtures, fittings or services and so cannot verify that they are connected, in working order or fit for purpose. It is imperative that the buyer of any property makes such checks, prior to purchase so as to satisfy themselves of the properties suitability for their purchase. .