



FOR SALE

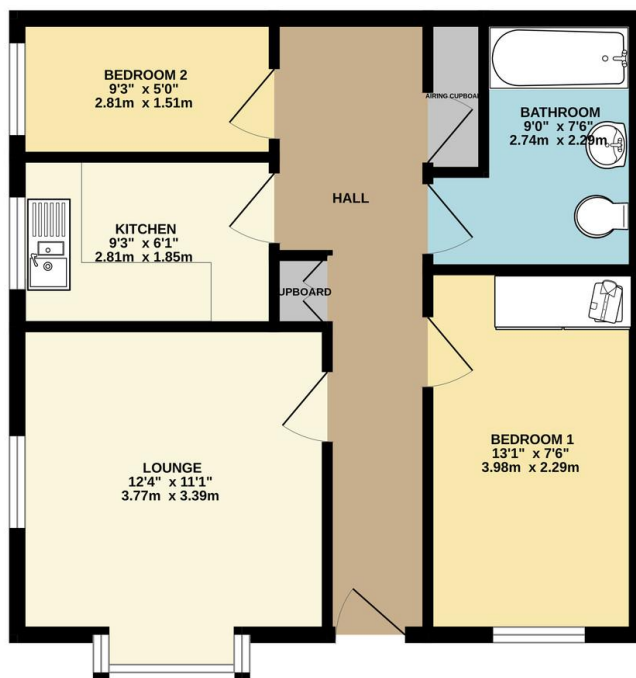
2 Bed Apartment in Parlour Close, Wigston, Leicester LE18 2DD
Offers In Excess Of £100,000

Offered with no upward chain and located in the popular over 55's residential development of Parlour Court sits this ground floor two bedroom neatly presented flat. The accommodation comprises main entrance hall, lounge, kitchen, two bedrooms, bathroom, shared parking, landscaped surrounding gardens. Call Phillips George to view.



EPC To Follow.

GROUND FLOOR
497 sq.ft. (46.2 sq.m.) approx.



TOTAL FLOOR AREA: 497 sq.ft. (46.2 sq.m.) approx.
Whilst every attempt has been made to ensure the accuracy of the floorplan contained here, measurements of doors, windows, rooms and any other items are approximate and no responsibility is taken for any error, omission or mis-statement. This plan is for illustrative purposes only and should be used as such by any prospective purchaser. The services, systems and appliances shown here have not been tested and no guarantee as to their operability or efficiency can be given.
Made with Metropix ©2024

- Over 55's Residential Development
- Ground Floor Flat
- Two Bedrooms
- Highly Popular Location
- Leasehold With Lengthy Lease
- Neatly Presented Throughout
- Parking
- No Upward Chain

Agents Note: Whilst every care has been taken to prepare these sales particulars, they are for guidance purposes only. All measurements are approximate are for general guidance purposes only and whilst every care has been taken to ensure their accuracy, they should not be relied upon and potential buyers are advised to recheck the measurements.

