



**Oxford Mews, Hove, BN3 3NF**  
Offers Over £550,000

## Oxford Mews, Hove, BN3 3NF

A well presented three bed, townhouse in Hove. Fantastic location near Hove Railway Station. Features a patio, garage, and a south-facing terrace.

A well presented townhouse located in the sought-after Oxford Mews, Hove. Situated in a private mews setting, this three-bedroom property offers a fantastic opportunity to acquire a modern and comfortable home. With its convenient location in close proximity to Hove Railway Station, this property is ideal for families, professionals, or anyone looking for easy access to transport links.

With accommodation arranged over three floors the house offers versatile living. On the ground floor is an entrance hall, shower room and bedroom with access to a small patio. On the first floor is a landing, modern fitted kitchen, and a living room with access to a south facing terrace, and on the top floor is a further shower room and two bedrooms.

Additional features of this property include an integral garage providing secure parking and storage solutions. With a generous floor area of approximately 744 sqft / 69.1 sqm, this townhouse offers plenty of space for comfortable living.

Oxford Mews is a highly desirable location that offers the perfect balance of tranquillity and convenience. With Hove Railway Station just a short walk away, commuting to Brighton, London or other nearby towns is a breeze. The vibrant centre of Hove, with its array of shops, cafes, and restaurants, is also within easy reach. The property also benefits from excellent transport links, giving you easy access to explore the surrounding areas.

There is a service charge payable for the up keep of the communal area and private road, approx £300 per annum.





# Oakley

Your Sussex Property Expert

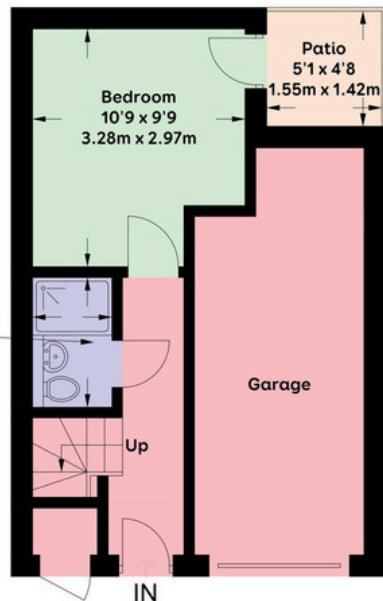
Brighton & Hove Office  
01273 688 881  
3-6 North Road, Brighton BN1 1YA  
www.oakleyproperty.com  
brighton@oakleyproperty.com

We also have offices in:  
Shoreham by Sea  
Lewes Town & Country  
The London Office



A new way of marketing property

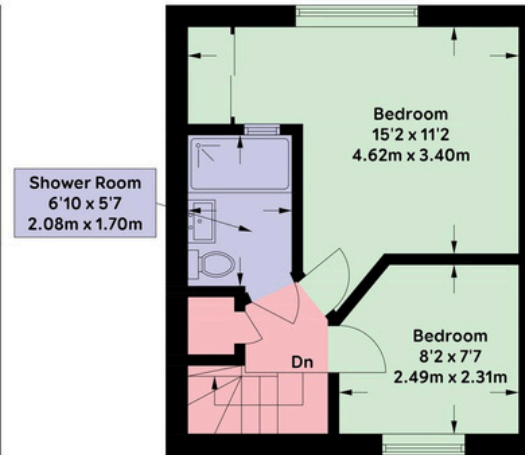
Get in touch to book a viewing or valuation of your own property



**Ground Floor**  
181 sq ft / 16.8 sq m



**First Floor**  
283 sq ft / 26.3 sq m



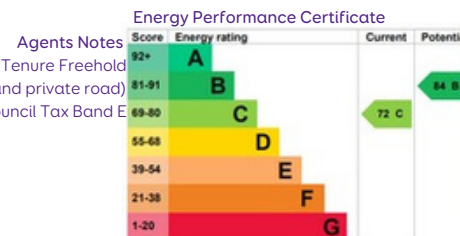
**Second Floor**  
280 sq ft / 26.0 sq m

APPROXIMATE GROSS INTERNAL AREA (EXCLUDING GARAGE AND EXTERNAL CUPBOARD) = 744 sqft / 69.1 sqm

Floor plan is for illustration and identification purposes only and is not to scale.  
Plots, gardens, balconies and terraces are illustrative only and excluded from all area calculations. All site plans are for illustration purposes only and are not to scale.  
This floor plan has been produced in accordance with Royal Institution of Chartered Surveyors' International Property Standards 2 (IPMS2).  
Every attempt has been made to ensure the accuracy however all measurements, fixtures, fittings and data shown is an approximate interpretation for illustrative purposes only.  
© Oakley Property 2024



Service charge Approx £300 Per Annum (for up keep of the communal area and private road)  
Council Tax Band E



Please note:  
These details have been produced in good faith and are believed to be accurate based upon the information supplied but they are not intended to form part of a contract. All statements contained in these particulars as to this property are made without responsibility on the part of Oakley, the vendors or lessors and are NOT to be relied on as statements or representations of fact. Any intending purchasers must satisfy themselves by inspection or otherwise as to the correctness of each of the statements contained in these particulars. The vendors, Oakley and any person who work in their employment do not have any authority to make or give any representation or warranty. The floor plan is for illustrative purposes only and the accuracy cannot be relied upon or guaranteed and no responsibility is taken for an error, omission or mis-statement. The total floor area shown has been taken from the EPC.