



AN ATTRACTIVE 3 BEDROOM DETACHED HOME WITH SCOPE TO EXTEND (STPP)

Pinner View, North Harrow, HA1 4RR

ROBSONS

Pinner View, North Harrow, HA1 4RR

**ENTRANCE HALLWAY • GUEST CLOAKROOM •
GENEROUS LOUNGE • CONTEMPORARY
KITCHEN / DINER • THREE DOUBLE
BEDROOMS • LUXURY FAMILY BATHROOM •
ATTRACTIVE REAR GARDEN • OFF-STREET
PARKING • GARAGE • SCOPE TO EXTEND
(STPP)**

Description

A modern and well-presented three-bedroom detached family home, with an attractive rear garden and off-street parking, conveniently placed for a choice of local high streets, schools and excellent transport facilities. The property offers generously proportioned interiors, perfect for growing families, with scope to extend (STPP).

The ground floor comprises an inviting entrance hallway with stairs to the first floor and a modern guest cloakroom, a generous front-aspect lounge with a feature fireplace, and a contemporary kitchen / diner to the rear. The kitchen offers a range of modern units with integrated appliances and ample storage space, with a well-sized dining area that has bi-folds opening out to the garden.





To the first floor there are three well-appointed bedrooms with fitted wardrobes, and a luxury family bathroom boasting a free standing bath tub and a shower cubicle.

The property boasts a beautifully maintained rear garden that is part lawn and part patio, with a driveway to the front providing off-street parking, along with a garage.

Location

Positioned off Parkside Way, this property is just a short distance from North Harrow's Amenities and the Metropolitan Line at North Harrow Underground Station. Pinner, Hatch End and Rayners Lane high streets are also within easy reach, as is Harrow Town Centre for more extensive shopping. The Area is well served by primary and secondary schooling, with Pinner Park Primary, Vaughan Primary and Nower Hill High all within easy reach.

Additional Information

Tenure: Freehold

Local Authority: London Borough of Harrow

Council Tax: Band F

Energy Efficiency Rating: D



Approximate Gross Internal Area
Ground Floor = 54.0 sq m / 581 sq ft
First Floor = 53.5 sq m / 576 sq ft
Garage = 9.8 sq m / 105 sq ft
Total = 117.3 sq m / 1,262 sq ft

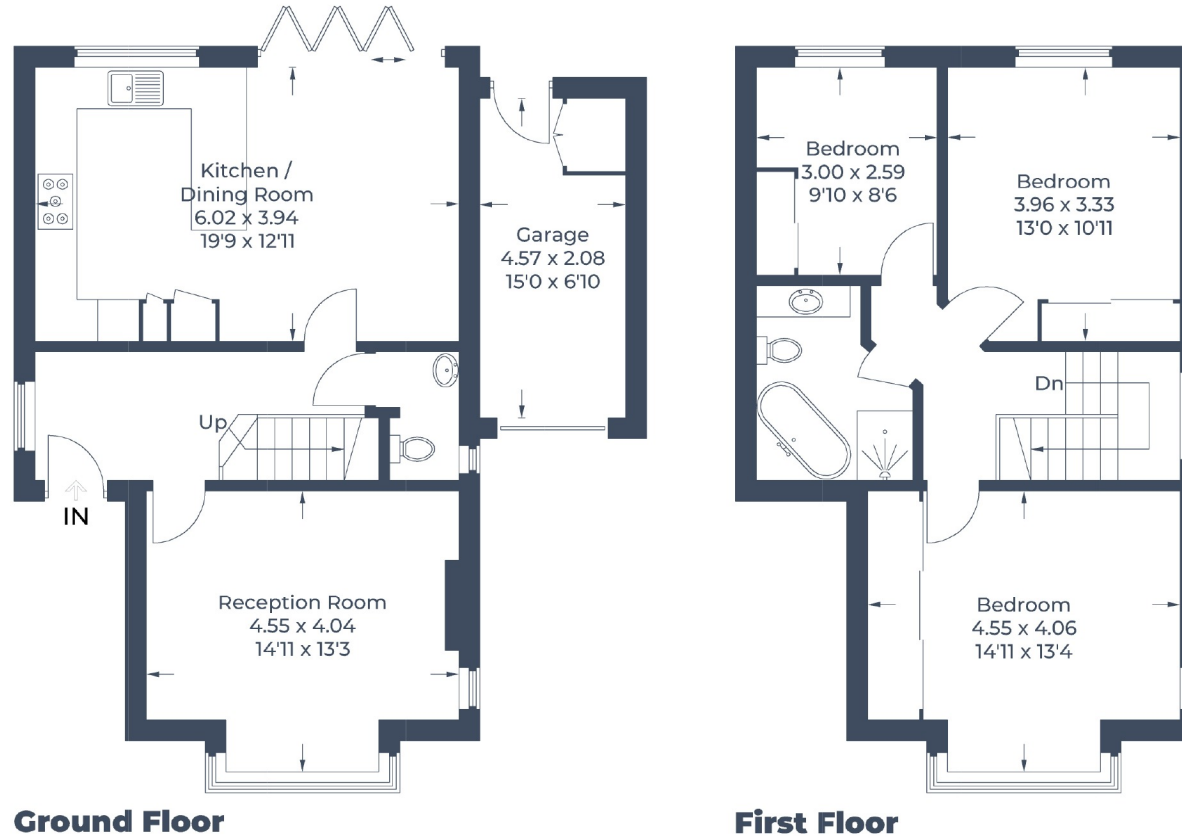


Illustration for identification purposes only,
measurements are approximate, not to scale.
© CJ Property Marketing Produced for Robsons

ROBSONS

1 High Street, Pinner HA5 5PJ
Tel: 020 8866 8083 Email: pinner@robsonswb.com
www.robsonswb.com