



MILE



Palermo Road, London NW10 £420,000 Share of Freehold

Welcome to Palermo Road. Nestled in a charming neighbourhood, this delightful two-bedroom period property offers a rare opportunity to own a share of freehold in a highly sought-after location. With its own private entrance and a dedicated section of the garden, this chain-free apartment presents an ideal canvas for those looking to create their dream home. Though in need of modernisation, the potential of this residence is boundless. The generous living spaces retain original features that can be restored to their former glory, adding to the property's unique charm and character. Situated just a short walk from both the Bakerloo Line and Overground, commuting and exploring the city has never been easier. The local area boasts a warm community atmosphere with good neighbours and a range of amenities close by. This property is not just a home but a lifestyle opportunity, offering a blend of convenience, character, and potential. Don't miss the chance to make it your own.

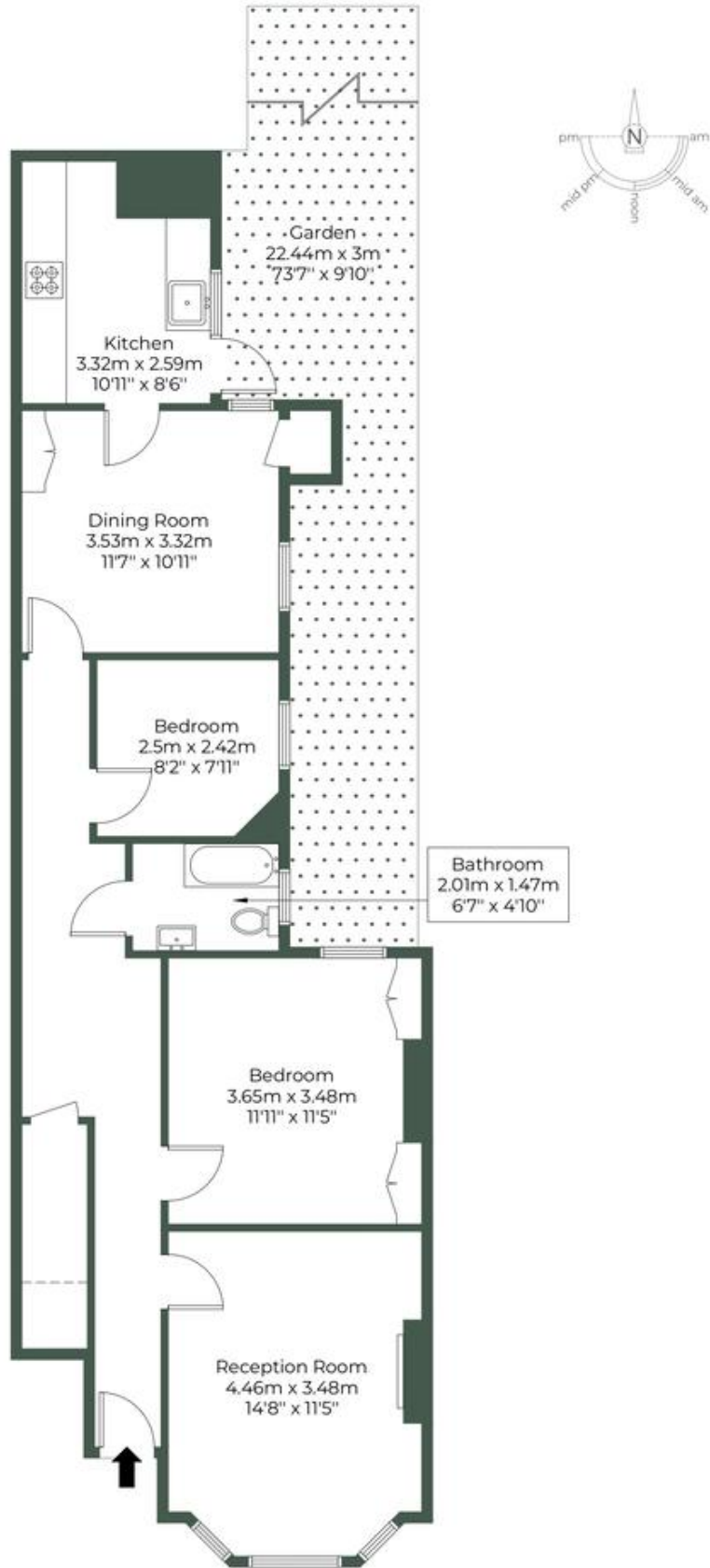
- Ground floor flat
- Garden apartment
- Two bedrooms
- Chain free
- Share of freehold
- Modernisation required
- Quiet residential road
- Good location
- Lots of potential
- Close to shops and transport

PALERMO ROAD, NW10 5YR

Approximate Gross Internal Area = 73.4 sq.m / 790 sq.ft

Restricted head height = 0.9 sq.m / 10 sq.ft

Total = 74.3 sq.m / 800 sq.ft



Ground Floor



MONEY LAUNDERING REGULATIONS 2003: Intending purchasers will be asked to produce identification documentation at a later stage and we would ask for your co-operation in order that there will be no delay in agreeing the sale.

General: While we endeavour to make our sales particulars fair, accurate and reliable, they are only a general guide to the property and, accordingly, if there is any point which is of particular importance to you, please contact the office and we will be pleased to check the position for you, especially if you are contemplating travelling some distance to view the property.

Measurements: These approximate room sizes are only intended as general guidance. You must verify the dimensions carefully before ordering carpets or any built-in furniture.

Services: Please note we have not tested the services or any of the equipment or appliances in this property, accordingly we strongly advise prospective buyers to commission their own survey or service reports before finalising their offer to purchase.