





Welcome to this beautifully presented semi-detached house, perfectly situated in a modern residential estate in the ever popular east end of Glasgow. This charming home offers a blend of contemporary living and comfort, featuring an entrance hallway and stairs with new carpeting, a spacious lounge, a large kitchen, two double bedrooms, each with fitted storage and new carpets, a newly fitted elegant shower room, front and rear gardens, a half floored loft and a 2 car driveway. Ideal for first-time buyers, small families, or those looking to downsize, this home is ready to move into and enjoy. Don't miss the opportunity to make this modern, well-appointed house your new home.

MQ Assisted Move, Part Exchange and 95% mortgages are available.

LOUNGE

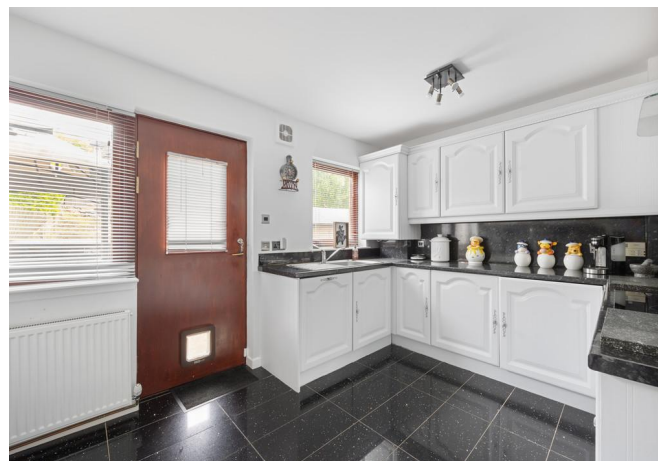
14' 6" x 10' 5" (4.42m x 3.18m) A bright and airy space, ideal for relaxing and entertaining.

KITCHEN

13' 8" x 10' 2" (4.19m x 3.11m) Ample space for cooking and dining, providing the perfect setting for culinary creativity.

MASTER BEDROOM

11' 6" x 9' 6" (3.52m x 2.91m) The master bedroom overlooks the rear of the property. There is fitted mirrored wardrobes and newly laid carpets, ensuring comfort and convenience.



BEDROOM TWO

10' 4" x 7' 9" (3.15m x 2.37m) The second double bedroom overlooks the front of the property. There is fitted mirrored wardrobes and an additional storage cupboard which provides great storage. Plush new carpets complete the room.

SHOWER ROOM

Newly fitted, showcasing modern fixtures and a sleek design. Complete with full tiling, walk in shower, towel radiator and spotlight lighting.

GARDENS

The front garden is well maintained with a convenient 2 car driveway for off-street parking. The rear garden is a beautifully landscaped, tiered garden offering a peaceful retreat for outdoor enjoyment and entertaining.

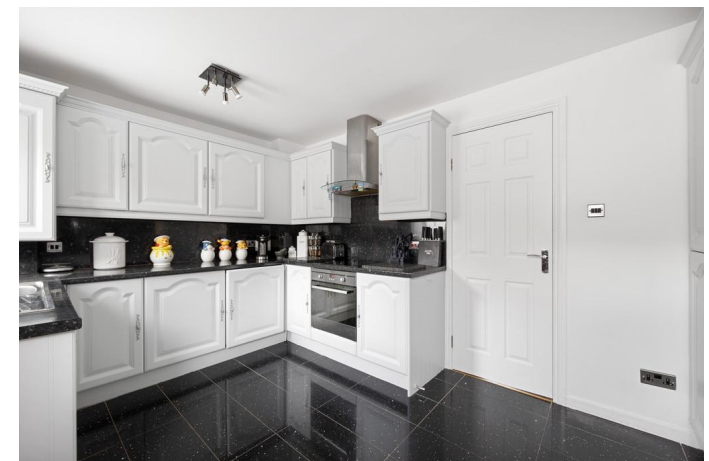
LOCATION

This property is located in a sought-after residential estate in Glasgow's East End, providing a tranquil living environment while being close to local amenities, schools, and transport links.

VIEWINGS

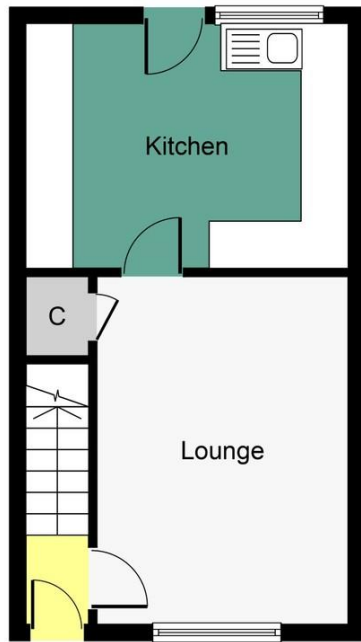
Don't miss the opportunity to make this modern, well-appointed house your new home. Viewing is by appointment only. Early internal viewing is recommended to appreciate all this beautiful home has to offer.

MQ Estate Agents are open 7 days a week: Monday to Friday 8am to 9pm & Saturday & Sunday 8.30am - 9pm to arrange your viewing or valuation appointment.

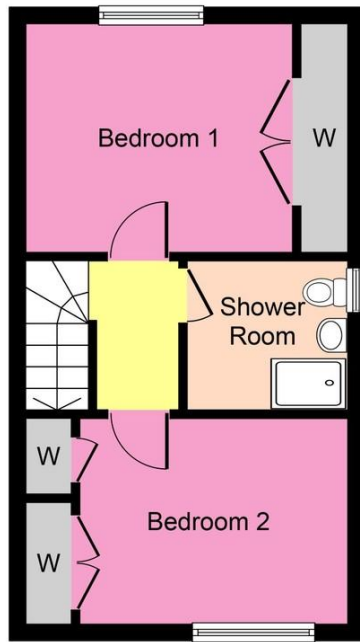








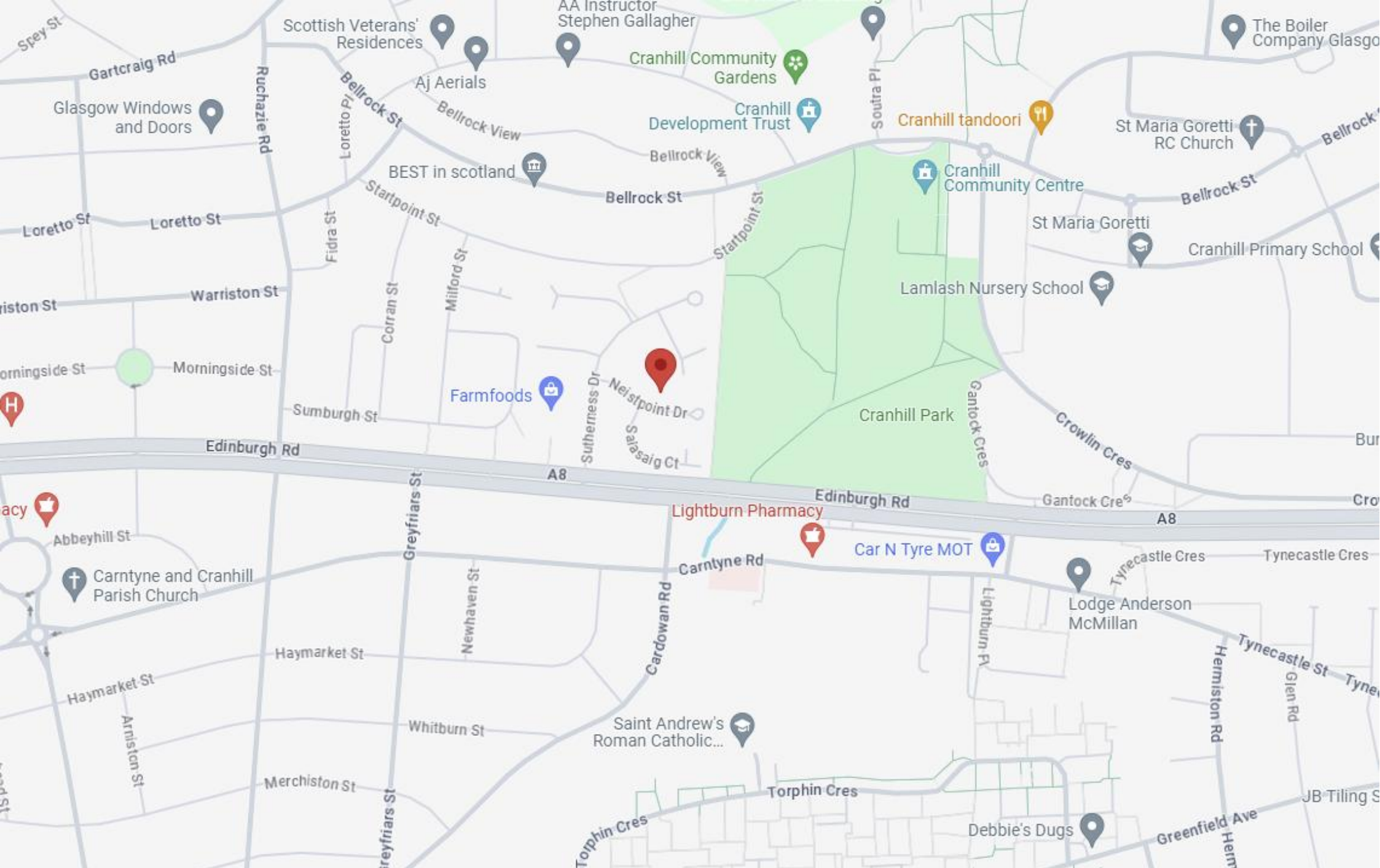
Ground Floor



First Floor



The logo for MQ Estate Agents & Lettings. It features a large, stylized white 'M' and 'Q' on a dark blue background. The 'M' is partially enclosed by a light blue square. To the right of the letters, the text 'Estate Agents & Lettings' is written in white. The entire logo is framed by a light blue border.



Call free on 0800 074 8585

www.mqestateagents.co.uk

We are registered with the Office of Fair Trading and the Property Ombudsman. You can be confident that the service is not only regulated but also fully transparent.

Whilst every precaution to ensure accuracy has been taken during the preparation of these particulars, if there is any aspect which is critical to your interest or which you find misleading, please contact us for further information. In accordance with the terms of the Property Misdescriptions Act, we wish to clarify all kitchen appliances or indeed and other mechanical items, apparatus or appliances relating to this property, including the central heating system, has not been inspected or tested and therefore MQ Estate Agents Limited do not warrant either now or at a later date their correct functions. Please note photographs taken with a wide angled lens and all measurements are approximate and are taken with a laser tape measure, therefore MQ Estate Agents Limited cannot guarantee true room sizes and will not be held responsible.