



60 Elie Avenue, Deans

Offers Over £135,000



60 Elie Avenue

Deans, Livingston

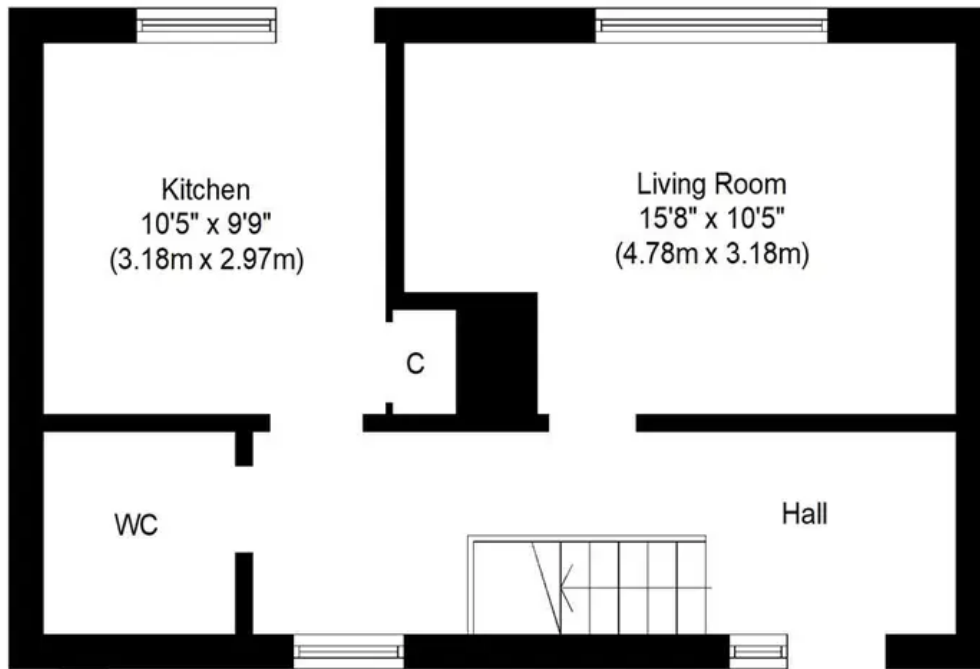
Presented to the market in move in condition this two bedroom terraced property has just been freshly decorated with the installation of carpets and f...

Council Tax band: B

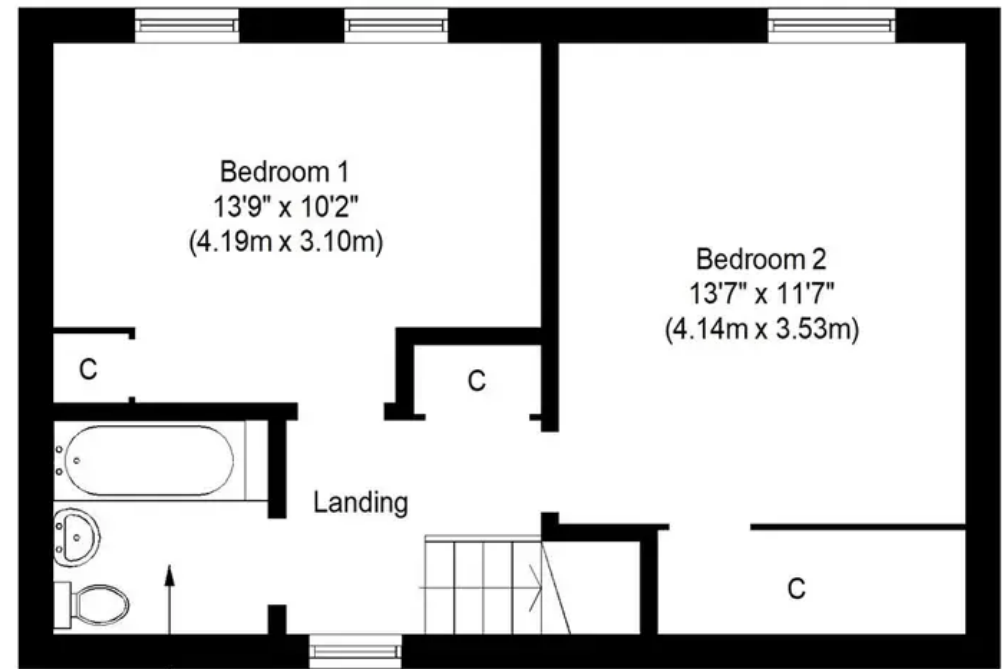
Tenure: Freehold

- Bathroom with mains shower
- Gas Central Heating with Combi Boiler
- Close to Schools
- Close to Livingston North Train Station
- Adjacent Parking
- Fully enclosed rear garden with gate for bins access
- Garden Hut
- Two Double Bedrooms with cupboards





Ground Floor
Approximate Floor Area
432 Sq. ft.
(40.1 Sq. m.)



Bathroom
6'1" x 6'0"
(1.85m x 1.83m)

First Floor
Approximate Floor Area
432 Sq. ft.
(40.1 Sq. m.)

Whilst every attempt has been made to ensure the accuracy of the floor plan contained here, measurements of doors, windows, rooms and any other items are approximate and no responsibility is taken for any error, omission, or mis-statement. This plan is for illustrative purposes only and should be used as such by any prospective purchaser or tenant. The services, systems and appliances shown have not been tested and no guarantee as to their operability or efficiency can be given.



KnightBain Estate Agents

Knightbain, 4 Greendykes Road, Broxburn - EH52 5AG

01506 852000

info@knightbain.co.uk

www.knightbain.co.uk/

