

# Winton Park

A stunning development of 2, 3 & 4 bedroom family homes

## Blindwells



# Winton Park, Blindwells

## The area

Winton Park resides in the attractive new neighbourhood of Blindwells, in the heart of East Lothian. It's a stone's throw from the stunning Firth of Forth coastline and a short drive from Edinburgh.

Here, you'll find a thriving community with plenty of local amenities, plus the perks of being in the ideal position to enjoy everything Scotland has to offer.

The nearby towns of Prestonpans and Tranent offer a variety of shops and eateries, and if you like to get out and about, there are over 40 miles of beautiful coastline to explore.

With idyllic walks, picturesque beaches and famous golf courses on your doorstep, there's something for all the family.

## How to get there

**From Edinburgh:** Travel eastbound out of the city, via the A1. After approximately 8 miles, take the A198 exit towards North Berwick/Prestonpans/Cockenzie/Tranent. At the Bankton Junction, take the second exit onto the A198. Winton Park, within Blindwells, will be on your right.

## The vision

**The vision for Blindwells is the creation of a high-quality and successful place, which creates a thriving community that people will feel proud to be part of.**

The new homes at Blindwells will provide the best of modern living, incorporating high-quality designs and materials for an enduring appeal. The neighbourhood will incorporate a new local centre and provide opportunities for commercial development.

We will integrate leisure opportunities to help facilitate healthy lifestyles with extensive walking, cycling and running routes around and throughout the site, all tied together with a clear landscape strategy.

This will be achieved by responding to the existing landscape structure and topography of the site to create a safe and pleasant new settlement, which both reflects the history and character of the location and allows for future expansion.

We believe that the landscape strategy at Blindwells will be a critical component to its long-term success and popularity.

**From North Berwick:** Head west out of town via the A198. After approximately 3 miles, turn left onto the B1345. When you get to Drem, continue west onto the B1377. At the roundabout, take the first exit onto the A198. Take the next left to arrive at Winton Park.

The proposals include education facilities, a healthcare hub, local retail outlets and many other services needed to establish a thriving new community. The masterplan for the development provides an integrated and creative solution for an area which has already been identified for new homes in the East Lothian Local Plan.

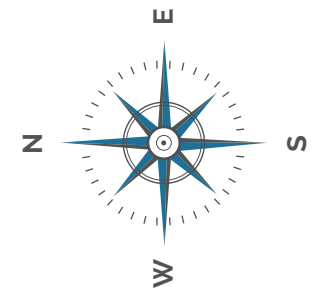


**From Haddington:** Depart the town west on the A1. Exit the A1 at the Bankton junction and take the fourth exit at the roundabout. At the next roundabout, take the first exit onto the A198. Turn right onto Winton Park.

# Winton Park, Blindwells

## Site map

It's important to see where your new home is positioned in the development, and the map will show you both the plot and the locality within the surroundings.



Douglas 2 bed terrace	Hawthorne 2 bed semi-detached/terrace	Anson 3 bed semi-detached/terrace	Erskine 3 bed terrace	Emerson 3 bed semi-detached	Blair 3 bed semi-detached	Bromley 3 bed detached	Linton 4 bed detached	Kennedy 4 bed detached	Ashworth 4 bed detached	Fincastle 4 bed detached
-----------------------------	---	---	-----------------------------	-----------------------------------	---------------------------------	------------------------------	-----------------------------	------------------------------	-------------------------------	--------------------------------

Plots not yet under construction may be subject to change and local authority approval. These impressions are for illustrative purposes only and will vary by development. All colours and specifications should be checked with our Sales representative prior to reservation. Our policy is one of continual improvement and whilst every care has been taken with the accuracy of this brochure, certain details may have changed since printing. Please check the technical specification with our Sales Manager as the details herein do not constitute a part of any contract, nor do they constitute an offer.

Douglas

2 bed  
terrace

**ogilvie**  
HOMES

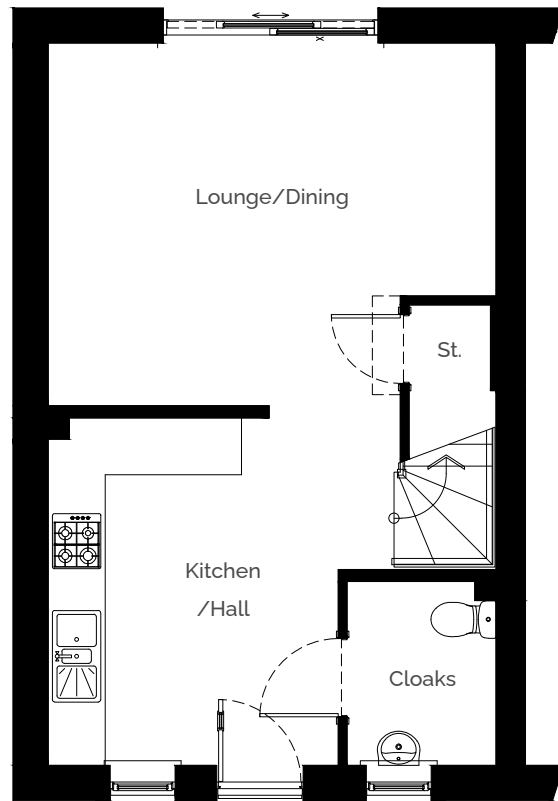




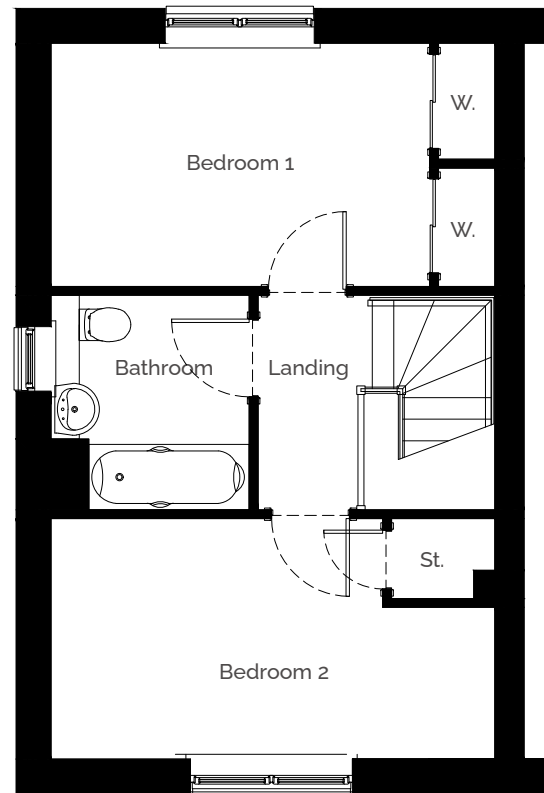
# Douglas

2 bedroom end/mid terrace

Ground floor



First floor



## Dimensions

### Ground floor

Lounge/Dining:  
4,721mm x 3,823mm  
15'6" x 12'7"

Kitchen/Hall:  
3,057mm x 3,664mm  
10' x 12'

Cloakroom  
1,570mm x 1,938mm  
5'2" x 6'4"

### Total area

72.0 sq.m/775 sq.ft

### First floor

Bedroom 1:  
4,027mm x 2,587mm  
13'3" x 8'6"

Bedroom 2:  
4,721mm x 2,558mm  
15'6" x 8'5"

Bathroom:  
2,108mm x 2,283mm  
6'11" x 7'6"

These impressions are for illustrative purposes only and will vary by development. All colours and specifications should be checked with our Sales representative prior to reservation. Room measurements given are approximate only. Floor plans, dimensions and specifications on any particular development are correct at time of going to press. Nothing contained in this brochure shall constitute or form any part of any contract. All dimensions are  $\pm 50$ mm.

Hawthorne

2 bed  
semi-detached/terrace

**ogilvie**  
HOMES

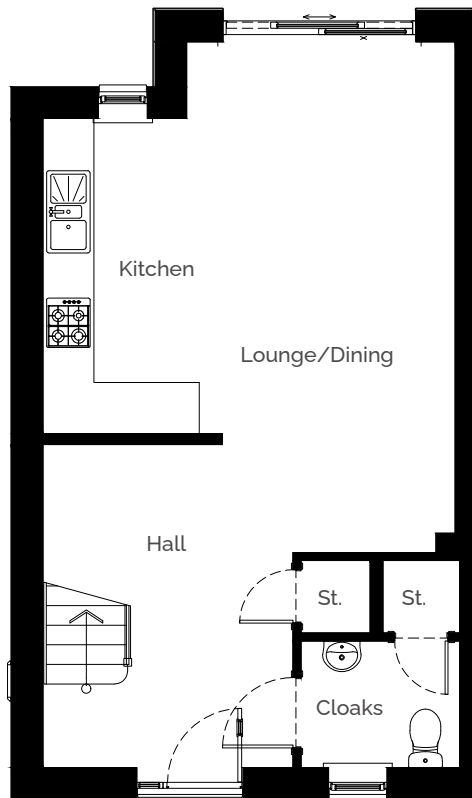




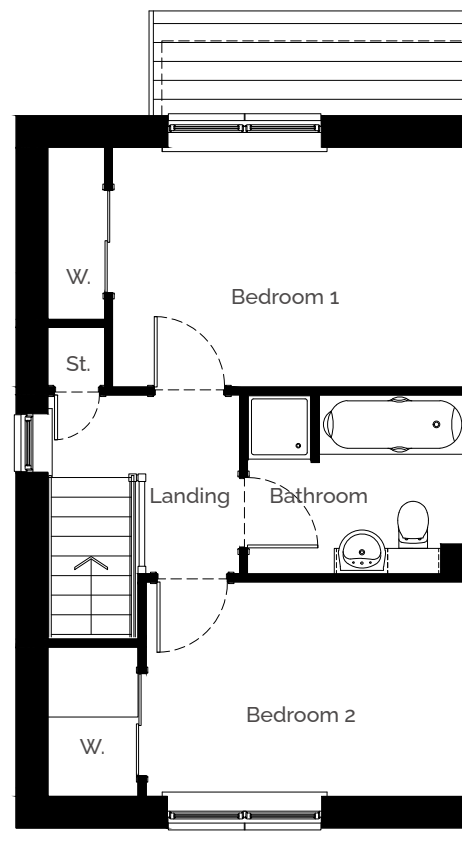
# Hawthorne

2 bedroom semi-detached/mid terrace

Ground floor



First floor



## Dimensions

### Ground floor

Lounge/Dining:  
3,150mm x 5,990mm  
10'4" x 19'8"

Kitchen:  
2,110mm x 3,700mm  
16'11" x 12'2"

Cloakroom:  
1,860mm x 1,490mm  
6'1" x 4'10"

### First floor

Bedroom 1:  
4,130mm x 2,810mm  
13'7" x 9'3"

Bedroom 2:  
3,740mm x 2,520mm  
12'3" x 8'3"

Bathroom:  
2,550mm x 2,100mm  
8'4" x 6'11"

### Total area

77.3 sq.m/832 sq.ft

These impressions are for illustrative purposes only and will vary by development. All colours and specifications should be checked with our Sales representative prior to reservation. Room measurements given are approximate only. Floor plans, dimensions and specifications on any particular development are correct at time of going to press. Nothing contained in this brochure shall constitute or form any part of any contract. All dimensions are  $\pm 50$ mm.

Anson

3 bed  
semi-detached/terrace

**ogilvie**  
HOMES



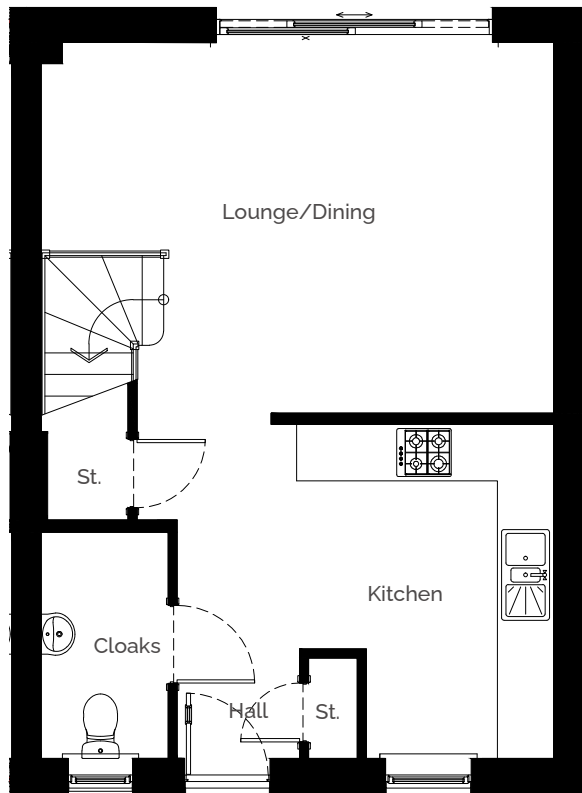




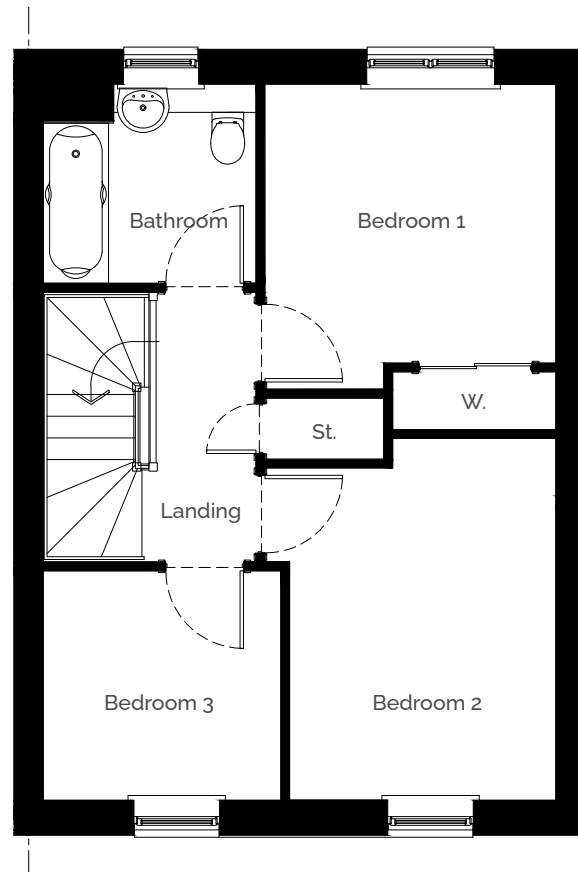
# Anson

3 bedroom end terrace/semi-detached

Ground floor



First floor



## Dimensions

### Ground floor

Lounge/Dining:  
5,450mm x 3,940mm  
17'11" x 12'11"

Kitchen:  
3,010mm x 3,550mm  
9'10" x 11'8"

Cloakroom  
1,350mm x 2,410mm  
4'5" x 7'11"

### First floor

Bedroom 1:  
3,100mm x 2,970mm  
10'2" x 9'9"

Bedroom 2:  
2,830mm x 3,850mm  
9'3" x 12'8"

Bedroom 3:  
2,520mm x 2,440mm  
8'3" x 8'

Bathroom  
2,260mm x 2,120mm  
7'5" x 6'11"

### Total area

83.0 sq.m/893 sq.ft

These impressions are for illustrative purposes only and will vary by development. All colours and specifications should be checked with our Sales representative prior to reservation. Room measurements given are approximate only. Floor plans, dimensions and specifications on any particular development are correct at time of going to press. Nothing contained in this brochure shall constitute or form any part of any contract. All dimensions are  $\pm 50$ mm.

Erskine

3 bed  
terrace

**ogilvie**  
HOMES

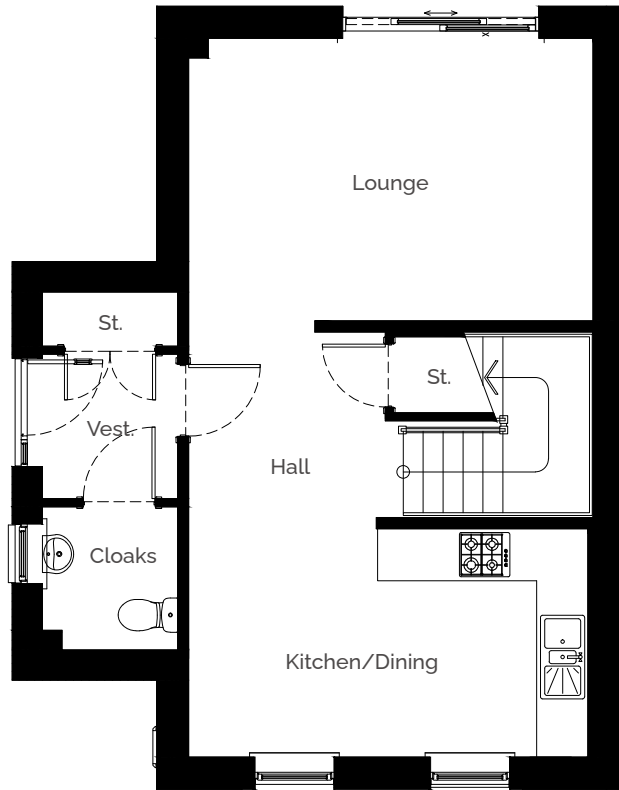




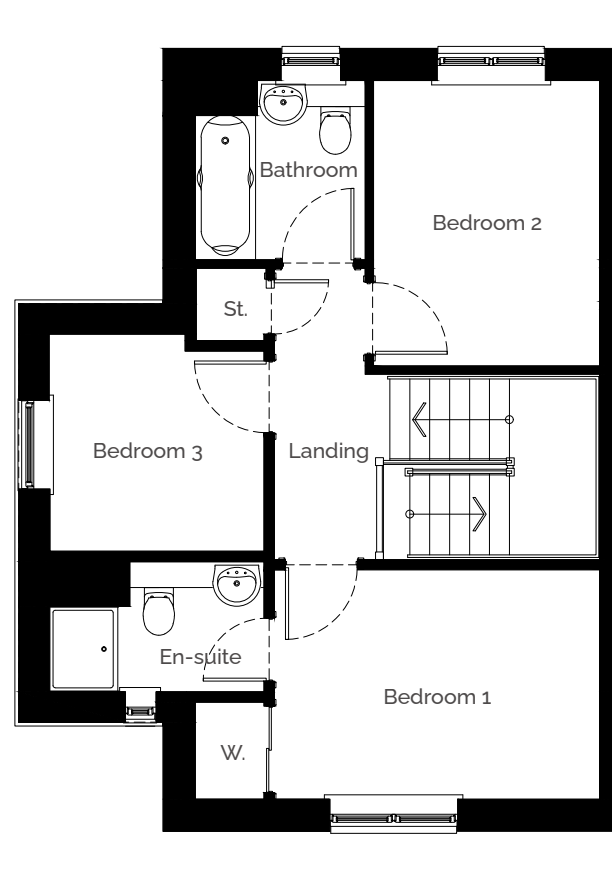
# Erskine

3 bedroom semi-detached

Ground floor



First floor



## Dimensions

### Ground floor

Lounge:  
4,660mm x 3,260mm  
15'4" x 10'8"

Kitchen/Dining:  
4,610mm x 2,640mm  
15'2" x 8'8"

Cloakroom  
1,560mm x 1,650mm  
5'1" x 5'5"

### First floor

Bedroom 1:  
3,750mm x 2,670mm  
12'4" x 8'9"

Bedroom 2:  
2,610mm x 3,290mm  
8'7" x 10'10"

Bedroom 3:  
2,510mm x 2,530mm  
8'3" x 8'4"

Bathroom  
1,960mm x 2,070mm  
6'5" x 6'9"

### Total area

91.2 sq.m/982 sq.ft

En-suite  
2,510mm x 1,500mm  
8'3" x 4'11"

These impressions are for illustrative purposes only and will vary by development. All colours and specifications should be checked with our Sales representative prior to reservation. Room measurements given are approximate only. Floor plans, dimensions and specifications on any particular development are correct at time of going to press. Nothing contained in this brochure shall constitute or form any part of any contract. All dimensions are ±50mm.

Emerson

3 bed  
semi-detached

**ogilvie**  
HOMES

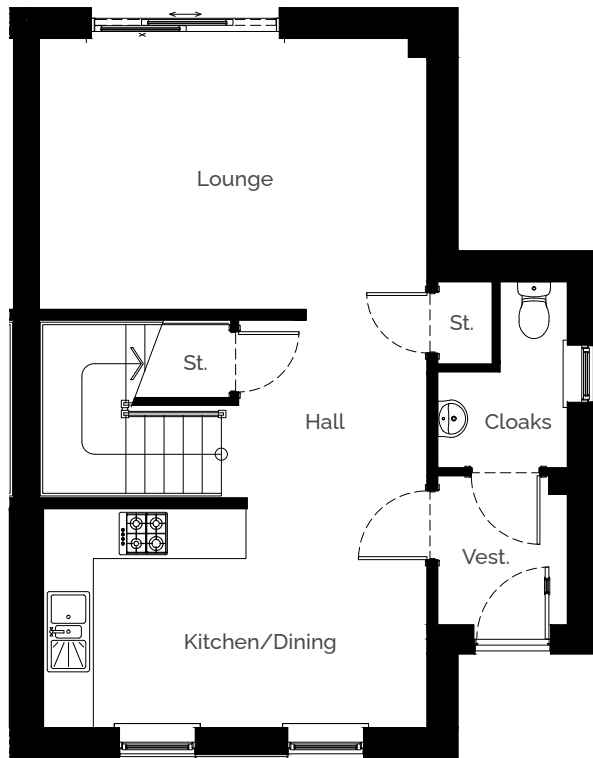




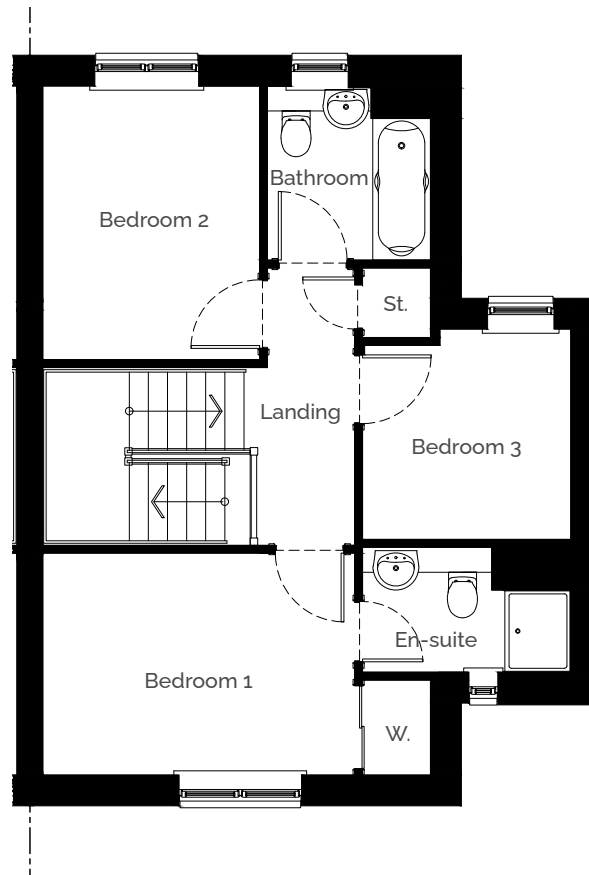
# Emerson

3 bedroom semi-detached

Ground floor



First floor



## Dimensions

### Ground floor

Lounge:  
4,670mm x 3,260mm  
15'4" x 10'8"

Kitchen/Dining:  
4,610mm x 2,640mm  
15'2" x 8'8"

Cloak room  
1,560mm x 2,240mm  
5'1" x 7'4"

### First floor

Bedroom 1:  
3,750mm x 2,670mm  
12'4" x 8'9"

Bedroom 2:  
2,611mm x 3,290mm  
8'7" x 10'10"

Bedroom 3:  
2,510mm x 2,530mm  
8'3" x 8'4"

Bathroom  
1,960mm x 2,090mm  
6'5" x 6'10"

### Total area

91.2 sq.m/982 sq.ft

En-suite  
2,510mm x 1,500mm  
8'3" x 4'11"

These impressions are for illustrative purposes only and will vary by development. All colours and specifications should be checked with our Sales representative prior to reservation. Room measurements given are approximate only. Floor plans, dimensions and specifications on any particular development are correct at time of going to press. Nothing contained in this brochure shall constitute or form any part of any contract. All dimensions are ±50mm.

Blair  
3 bed  
semi-detached

**ogilvie**  
HOMES

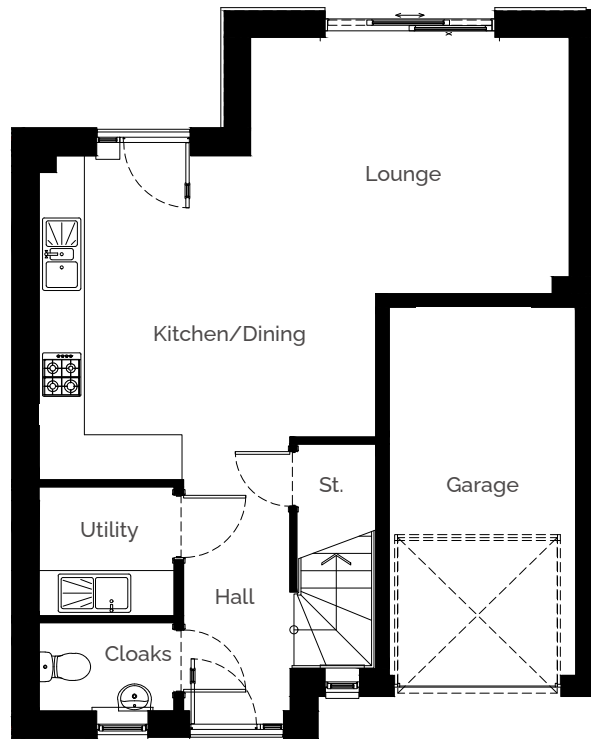




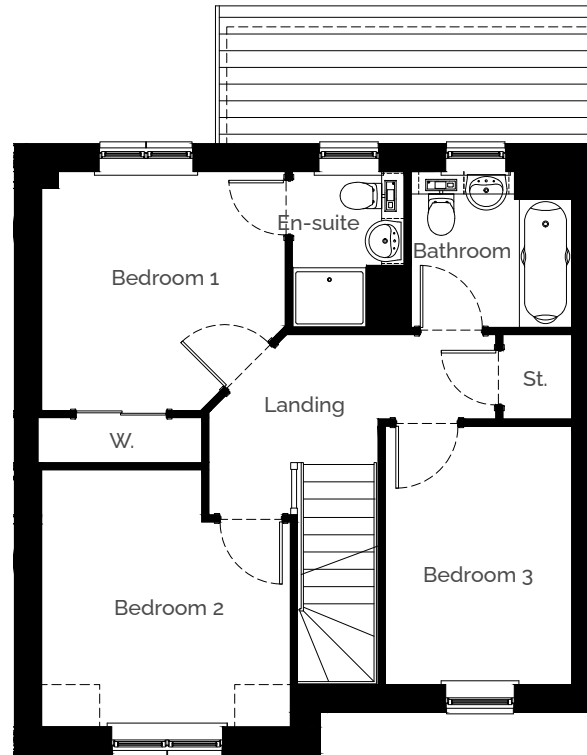
# Blair

3 bedroom semi-detached/integrated garage

Ground floor



First floor



## Dimensions

### Ground floor

Lounge:  
4,240mm x 3,410mm  
13'11" x 11'2"

Kitchen/Dining:  
4,480mm x 4,310mm  
14'8" x 14'2"

Utility:  
1,790mm x 1,720mm  
5'11" x 5'8"

Cloakroom  
1,790mm x 1,170mm  
5'11" x 3'10"

### First floor

Bedroom 1:  
3,240mm x 3,130mm  
10'8" x 10'3"

Bedroom 2:  
3,310mm x 3,420mm  
10'10" x 11'3"

Bedroom 3:  
2,480mm x 3,410mm  
8'2" x 11'2"

Bathroom  
2,140mm x 2,080mm  
7' x 6'10"

### Total area

93.9 sq.m/1,011 sq.ft  
excluding garage

En-suite  
1,490mm x 2,080mm  
4'11" x 6' 10"

These impressions are for illustrative purposes only and will vary by development. All colours and specifications should be checked with our Sales representative prior to reservation. Room measurements given are approximate only. Floor plans, dimensions and specifications on any particular development are correct at time of going to press. Nothing contained in this brochure shall constitute or form any part of any contract. All dimensions are ±50mm.

Bromley

3 bed  
detached

**ogilvie**  
HOMES



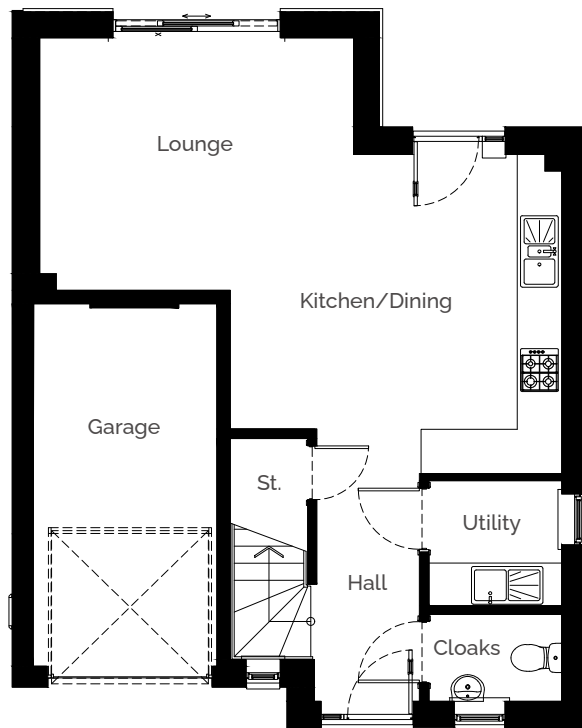




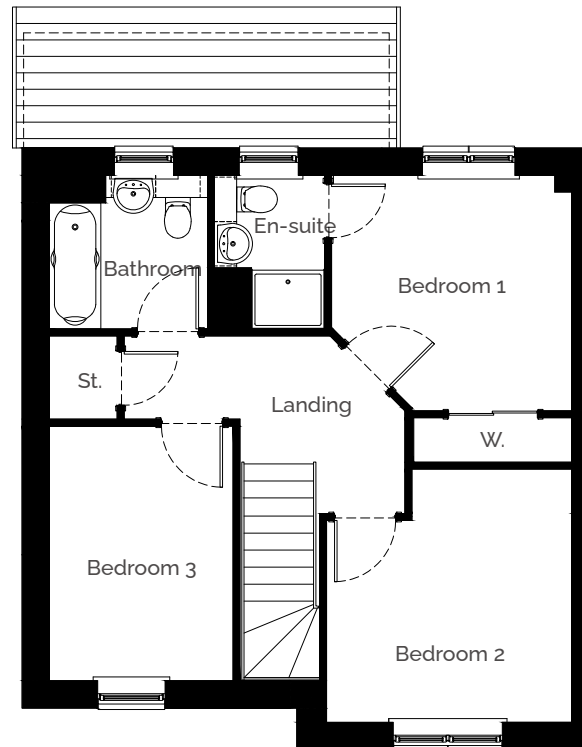
# Bromley

3 bedroom detached/integrated garage

Ground floor



First floor



## Dimensions

### Ground floor

Lounge:  
4,240mm x 3,410mm  
13'11" x 11'2"

Kitchen/Dining:  
4,480mm x 4,310mm  
14'8" x 14'2"

Utility:  
1,790mm x 1,720mm  
5'11" x 5'8"

Cloakroom  
1,790mm x 1,170mm  
5'11" x 3'10"

### First floor

Bedroom 1:  
3,240mm x 3,130mm  
10'8" x 10'3"

Bedroom 2:  
3,310mm x 3,420mm  
10'10" x 11'3"

Bedroom 3:  
2,480mm x 3,440mm  
8'2" x 11'3"

Bathroom  
2,140mm x 2,080 mm  
7' x 6'10"

### Total area

93.9 sq.m/1,011 sq.ft  
excluding garage

En-suite  
1,490mm x 2,080mm  
4'11" x 6'10"

These impressions are for illustrative purposes only and will vary by development. All colours and specifications should be checked with our Sales representative prior to reservation. Room measurements given are approximate only. Floor plans, dimensions and specifications on any particular development are correct at time of going to press. Nothing contained in this brochure shall constitute or form any part of any contract. All dimensions are  $\pm 50$ mm.

Linton

4 bed  
detached

**ogilvie**  
HOMES

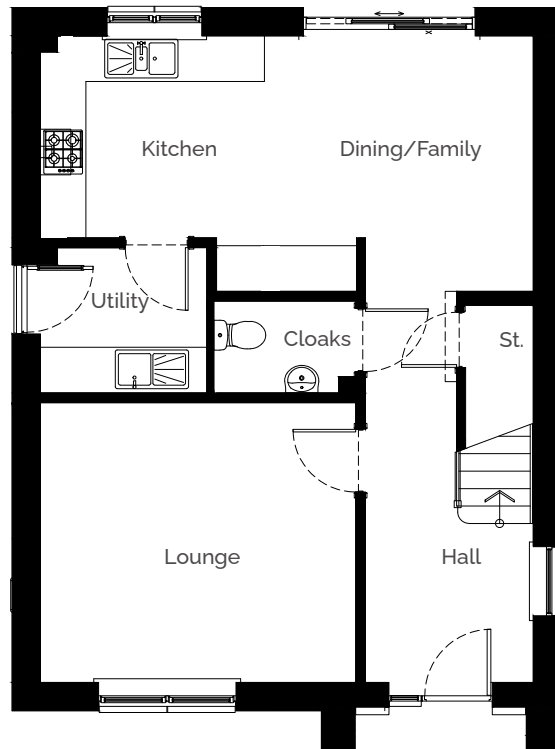




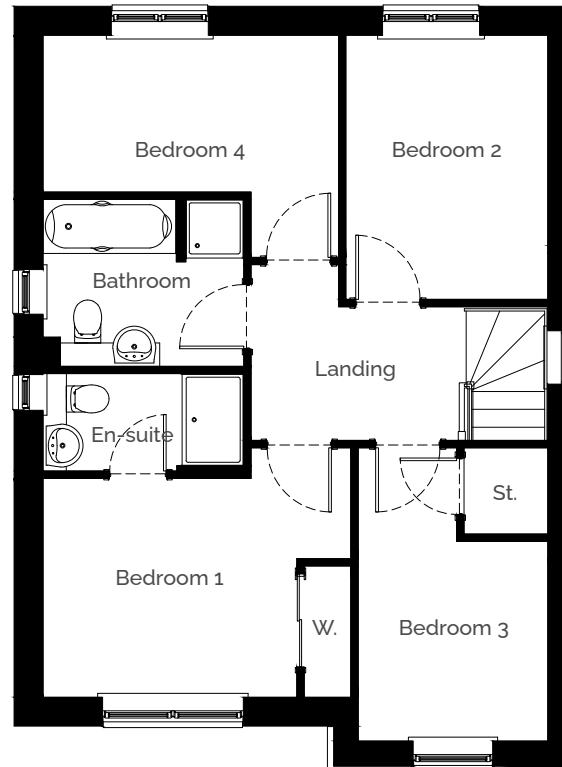
# Linton

4 bedroom detached/detached garage

Ground floor



First floor



## Dimensions

### Ground floor

Lounge:  
4,150mm x 3,690mm  
13'7" x 12'1"

Dining/Family:  
3,540mm x 3,360mm  
11'7" x 11'

Kitchen:  
2,950mm x 2,660mm  
9'8" x 8'9"

Cloakroom  
1,870mm x 1,210mm  
6'2" x 4'

Utility  
2,190mm x 1,910mm  
7'2" x 6'3"

### First floor

Bedroom 1:  
3,260mm x 2,820mm  
10'9" x 9'3"

Bedroom 2:  
2,600mm x 3,400mm  
8'6" x 11'2"

Bedroom 3:  
2,440mm x 2,570mm  
8' x 8'5"

Bedroom 4:  
3,800mm x 2,020mm  
12'6" x 6'7"

Bathroom  
2,580mm x 2,150mm  
8'6" x 7'1"

En-suite  
2,580mm x 1,250mm  
8'6" x 4'1"

### Total area

111.9 sq.m/1,205 sq.ft excluding garage

These impressions are for illustrative purposes only and will vary by development. All colours and specifications should be checked with our Sales representative prior to reservation. Room measurements given are approximate only. Floor plans, dimensions and specifications on any particular development are correct at time of going to press. Nothing contained in this brochure shall constitute or form any part of any contract. All dimensions are  $\pm 50$ mm.

Kennedy

4 bed  
detached

**ogilvie**  
HOMES

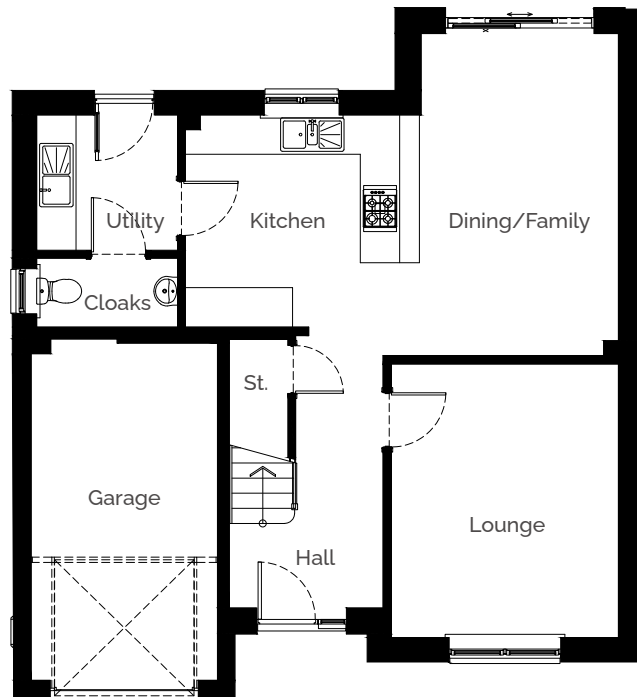




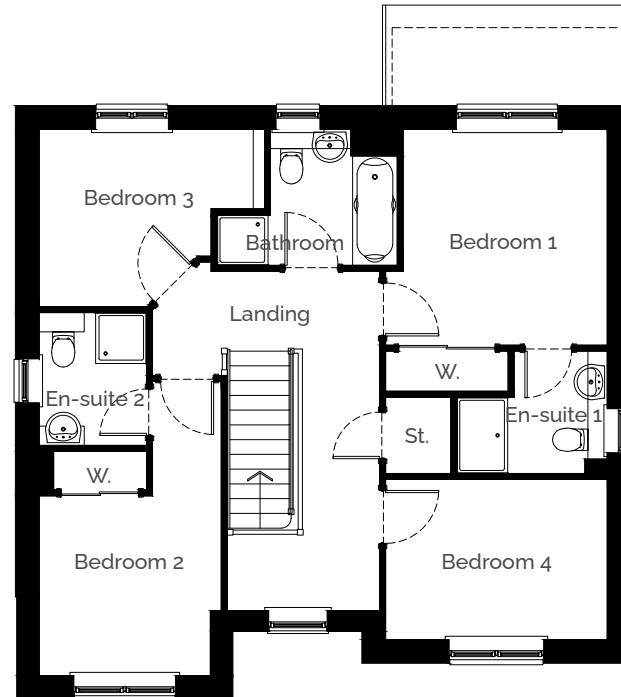
# Kennedy

4 bedroom detached/integrated garage

Ground floor



First floor



## Dimensions

### Ground floor

Lounge:  
3,450mm x 4,160mm  
11'4" x 13'8"

Dining/Family:  
3,000mm x 4,900mm  
9'10" x 16'1"

Kitchen:  
3,590mm x 3,230mm  
11'9" x 10'7"

Utility:  
2,150mm x 2,080mm  
7' x 6'10"

Cloaks:  
2,140mm x 1,050mm  
7' x 3'5"

Garage:  
2,840mm x 5,190mm  
9'4" x 17'

### First floor

Bedroom 1:  
3,180mm x 3,360mm  
10'5" x 11'

Bedroom 2:  
2,670mm x 2,800mm  
8'9" x 9'2"

Bedroom 3:  
3,510mm x 2,760mm  
11'6" x 9'1"

Bedroom 4:  
3,450mm x 2,490mm  
11'4" x 8'2"

En-suite 1:  
2,340mm x 1,910mm  
7'8" x 6'3"

En-suite 2:  
1,670mm x 2,070mm  
5'6" x 6'9"

Bathroom:  
2,810mm x 2,120mm  
9'3" x 6'11"

### Total area

129.9 sq.m/1,398 sq.ft excluding garage

These impressions are for illustrative purposes only and will vary by development. All colours and specifications should be checked with our Sales representative prior to reservation. Room measurements given are approximate only. Floor plans, dimensions and specifications on any particular development are correct at time of going to press. Nothing contained in this brochure shall constitute or form any part of any contract. All dimensions are  $\pm 50$ mm.

Ashworth

4 bed  
detached

**ogilvie**  
HOMES

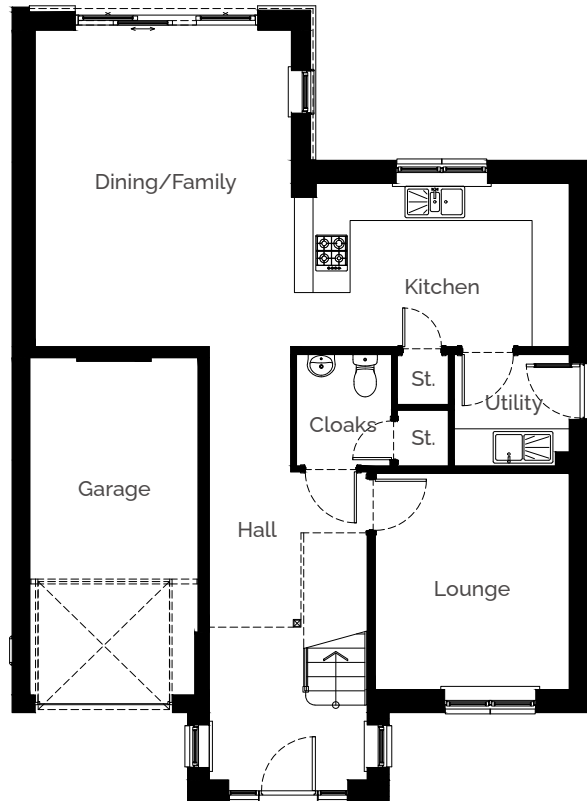




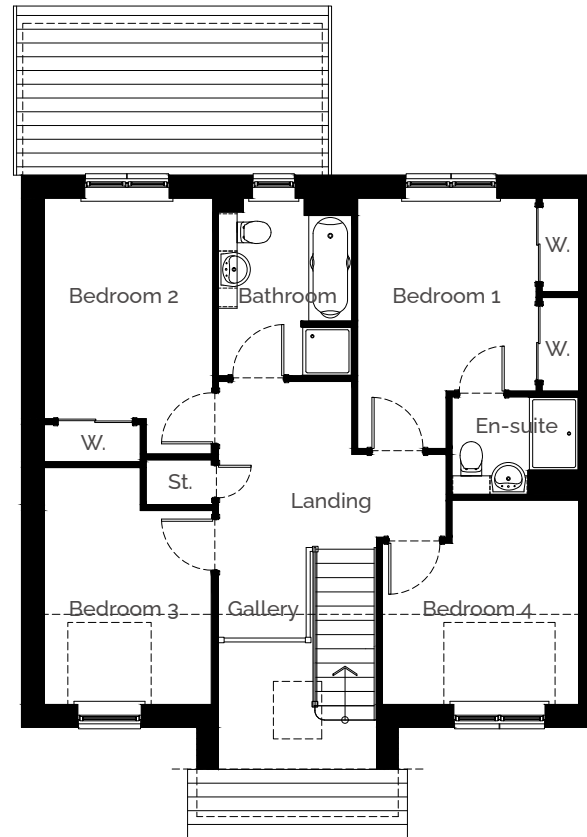
# Ashworth

4 bedroom detached/integrated garage

Ground floor



First floor



## Dimensions

### Ground floor

Lounge: 3,130mm x 3,490mm 10'3" x 11'6"	Utility: 1,860mm x 1,800mm 6'1" x 5'11"
Dining/Family: 4,140mm x 5,110mm 13'7" x 16'9"	Garage: 2,720mm x 5,450mm 8'11" x 17'11"
Kitchen: 4,490mm x 2,640mm 14'9" x 8'8"	Cloakroom: 1,530mm x 1,800mm 5' x 5'11"

### First floor

Bedroom 1: 2,880mm x 4,040mm 9'6" x 13'3"	Bedroom 4: 3,170mm x 3,300mm 10'5" x 10'10"
Bedroom 2: 2,720mm x 3,560mm 8'11" x 11'8"	Bathroom: 2,150mm x 2,870mm 7'1" x 9'5"
Bedroom 3: 2,720mm x 3,830mm 8'11" x 12'7"	En-suite: 2,040mm x 1,580mm 6'8" x 5'2"

### Total area

138.9 sq.m/1,475 sq.ft excluding garage

These impressions are for illustrative purposes only and will vary by development. All colours and specifications should be checked with our Sales representative prior to reservation. Room measurements given are approximate only. Floor plans, dimensions and specifications on any particular development are correct at time of going to press. Nothing contained in this brochure shall constitute or form any part of any contract. All dimensions are ±50mm.

Fincastle

4 bed  
detached

**ogilvie**  
HOMES



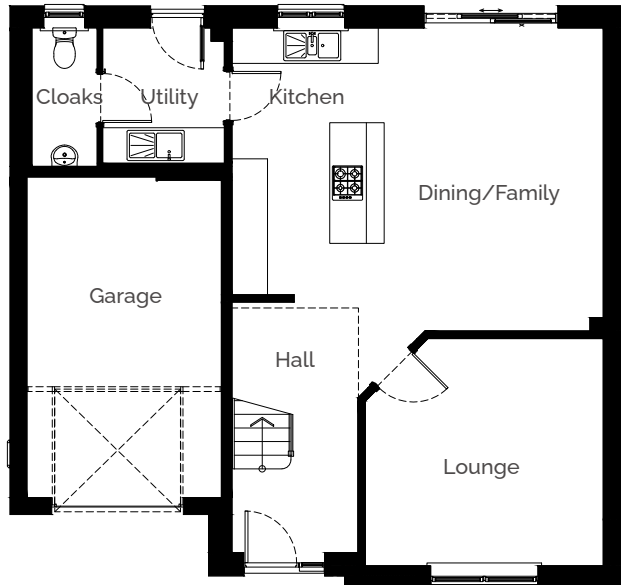




# Fincastle

4 bedroom detached/integrated garage

Ground floor



First floor



## Dimensions

### Ground floor

Lounge:  
4,010mm x 3,840mm  
13'2" x 12'7"

Dining/Family:  
3,700mm x 5,110mm  
12'2" x 16'9"

Kitchen:  
2,570mm x 4,500mm  
8'5" x 14'9"

Utility:  
2,050mm x 2,280mm  
6'9" x 7'6"

Garage:  
3,280mm x 5,410mm  
10'9" x 17'9"

Cloakroom  
1,100mm x 2,340mm  
3'7" x 7'8"

### First floor

Bedroom 1:  
3,260mm x 4,480mm  
10'8" x 14'8"

Bedroom 2:  
4,010mm x 2,830mm  
13'2" x 9'3"

Bedroom 3:  
3,700mm x 3,280mm  
10'9" x 12'2"

Bedroom 4:  
3,310mm x 2,310mm  
10'10" x 7'7"

Bathroom  
2,070mm x 2,000mm  
6'9" x 6'7"

En-suite 1  
2,440mm x 1,590mm  
8' x 5'3"

En-suite 2  
2,070mm x 1,650mm  
6'9" x 5'5"

### Total area

144.9 sq.m/1,560 sq.ft excluding garage

These impressions are for illustrative purposes only and will vary by development. All colours and specifications should be checked with our Sales representative prior to reservation. Room measurements given are approximate only. Floor plans, dimensions and specifications on any particular development are correct at time of going to press. Nothing contained in this brochure shall constitute or form any part of any contract. All dimensions are ±50mm.

# How to buy your dream home

Part 1

## Found the 'one'?

Once you have chosen your house style and which plot you want to buy, we can assist you, if required, with the following:

- Appointing a solicitor to carry out the conveyancing for your purchase is essential. However, should you require the recommendation of a solicitor, we will be happy to recommend options.
- Financial advice from an Independent Financial Advisor – if you do not have anyone in mind, we can recommend suitable independent advisors to provide free financial advice prior to your reservation. Please ask the Sales Manager for details.

The next stage is formalising your reservation agreement, which will hold your chosen plot and fix the price of the property for the period stipulated (usually two to three weeks) and making your reservation payment fee of £500.\* (The preferred payment method is online banking; however, if this is not available to you, the site sales manager can advise a suitable alternative.)

\*Should cancellation of your reservation be required, please check with the Development Sales Manager the level of fees incurred.

During the fixed period your reservation agreement states, our standard legal missive contract will be sent to your appointed solicitor. The stipulated expiration date on your reservation agreement will be the same as the date we require your missive contract to be concluded by. **These dates are extremely important as the reservation will automatically expire and any incentive offered will be withdrawn should the next stage of concluding the missive contract not have been achieved (unless a written request submitted from your solicitor to ours has been approved by our office) and the plot will be remarketed for sale.** Once you and your solicitor are satisfied with everything, your solicitor will conclude missives on your behalf. At this point, the balance of the deposit will be payable, which is a further £1,000, for a total deposit of £1,500.



# How to buy your dream home

Part 2

## Found the 'one'?

With the legalities complete, subject to build stage, you will be invited to a specific appointment at the marketing suite to make your colour choices from our excellent range of standard options, plus our client extras range, to finish your new home.\* The appointment date agreed will be the final opportunity for processing all colours and any client extras for the property (we are unable to consider any amendments/additions to your colour selections or chosen extras after this appointment date). However, we welcome as many visits by appointment as necessary prior to the final appointment date and time agreed on.

\*Please be advised only our pre-approved list of extras will be considered, subject to the build stage of the property at the time.

Following this, we will keep you informed at intervals of the progress of your home to monitor the build programme and anticipated entry date. **As your build progresses, we will be in a clearer position to advise on firmer, likely date for completion.**

Brexit, lockdowns and significant demand are combining to create shortages in the essential materials and labour the UK's housebuilding sector needs, with global supply chains significantly stretched and order backlogs now a regular occurrence. Whilst we will continue to provide all our customers with anticipated dates, some delays may be encountered in the coming months because of the shortages.



### Subject to build stage at point of reservation

- Prior to completion of foundations and ground floor – at this stage, we will advise buyers of an anticipated calendar quarter.
- When the roof is completed and the building weatherproof – at this stage, our buyer will be advised of the anticipated month of completion.
- When the home is decorated, main services connected and passed fit for habitation by the local authority and Warranty body provider – at this stage an anticipated move-in date will be agreed with you.

When your move-in date has been finalised, your funds from your solicitor will be transferred on the agreed date. You will receive a personal home demonstration of your new home from our site team representatives, along with the keys to your new home.

On your day of settlement, you will be provided with a one month after entry form to allow you to record any minor snagging issues, which will be reviewed by our site team at the end of the first month.

Details of our emergency customer care number will be provided for any urgent items.

## Specifications

### General

- 'A' rated energy efficient boiler
- 10-year new home warranty
- Thermostatically controlled radiators
- Multipoint locking system to front (rear doors where applicable)
- TV/FM/SAT and BT point to lounge to allow for future installation of a satellite
- Internal white panelled doors
- Contemporary chrome ironmongery
- Smooth ceiling finish
- White gloss skirtings, facings, stair balustrading
- Photovoltaic solar panels

### Kitchen

- Wide selection of kitchen units
- Single/1½ bowl stainless steel sink with chrome fittings
- Glass/stainless steel chimney hood and stainless steel splashback at hob
- Stainless steel oven
- Integrated fridge-freezer (where applicable)
- 4/5 burner gas hob (where applicable)
- Under wall unit lighting (where applicable)

### Bathroom

- Contemporary white sanitaryware
- Chrome taps
- Shaver point to en-suite (or to bathroom where there is no en-suite)
- gkW electric shower to en-suite (where applicable)
- Thermostatic shower to master en-suite and bathroom (where no en-suite)
- Fitted vanity units from contemporary range
- Choice from a wide range of co-ordinating ceramic wall tiles

### Utility (where applicable)

- Single bowl stainless steel sink with chrome fittings

### External

- Paved footpaths and patios
- Sensor lights to front (and rear where applicable)
- Turf to front gardens (where applicable)
- Rotovated topsoil to rear gardens
- UPVC soffits and fascias
- EV charging points

