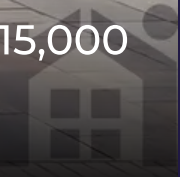


Station Road, Croston

PR26 9RJ

£215,000





Station Road is a delightful bay fronted two bedroom terrace property in the heart of the village of Croston with off road parking, easy access to primary transport routes and countryside walks. The cobbled driveway leads to the main entrance. Step into the vestibule and from there to the hallway, both having beautiful parquet flooring which runs through much of the ground floor. The lounge is lovely and light and opens to the heart of the house in the form of the dining room with wood burning stove and breakfast kitchen comprising a range of wall and base units with double electric oven and grill, electric hob and space, power and plumbing for appliances. Step out into the private, low maintenance rear garden with brick storage, Indian stone terraces, sleepers, mature shrubs and access to the front of the property. Back inside, stairs lead to the first floor landing with ladder access to the partially boarded loft with light. Bedroom one is to the rear with fitted wardrobes, built in storage housing the Worcester combi boiler, and original fireplace. Bedroom two is a comfortable single to the front alongside the spacious bathroom comprising p shaped bath with screen and electric shower over, tiled flooring and elevations, wc, ladder heated towel rail and floating wash hand basin. With over 900 square feet of accommodation this is a perfect place to call home.



Station Road is a delightful bay fronted two bedroom terrace property in the heart of the village of Croston with off road parking, easy access to primary transport routes and countryside walks. Council Tax band: B

Tenure: Freehold

- Two bedrooms
- Two large reception rooms
- Wood burning stove
- Private garden
- Available with vacant possession

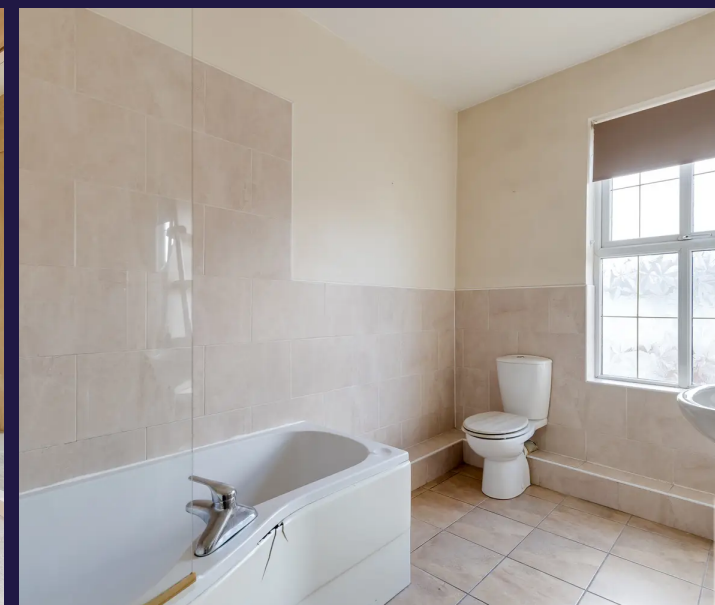


HOME  TRUTHS

Eccleston Branch
265 The Green, Eccleston, PR7 5TF
01257 451673

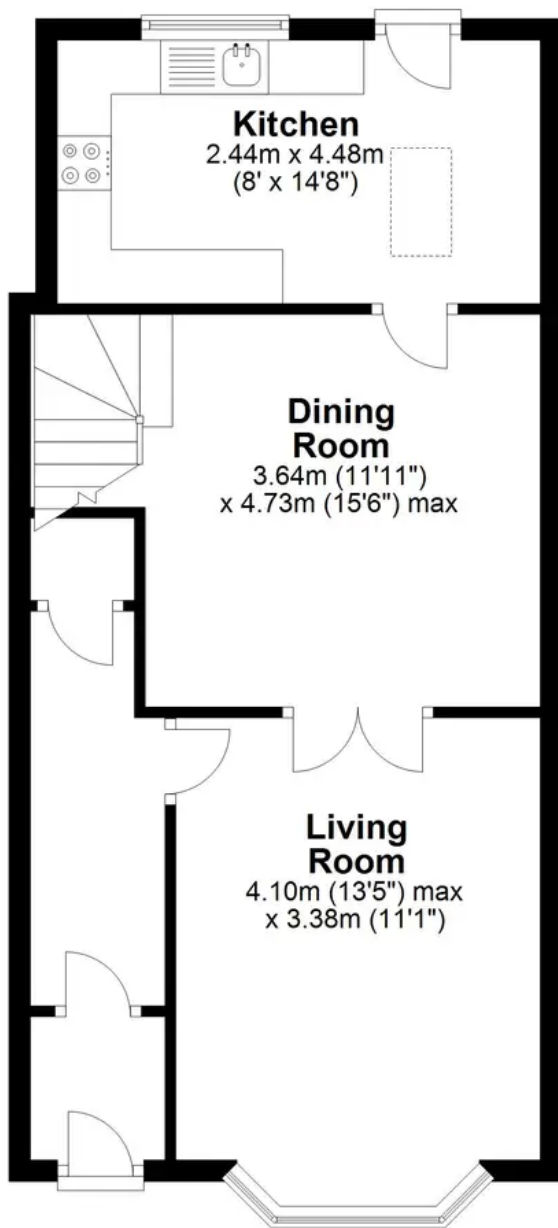
Coppull Branch
244 Spendmore Lane, Coppull, PR7 5DE
01257 794588

www.hometruthslancs.co.uk
office@hometruthslancs.co.uk



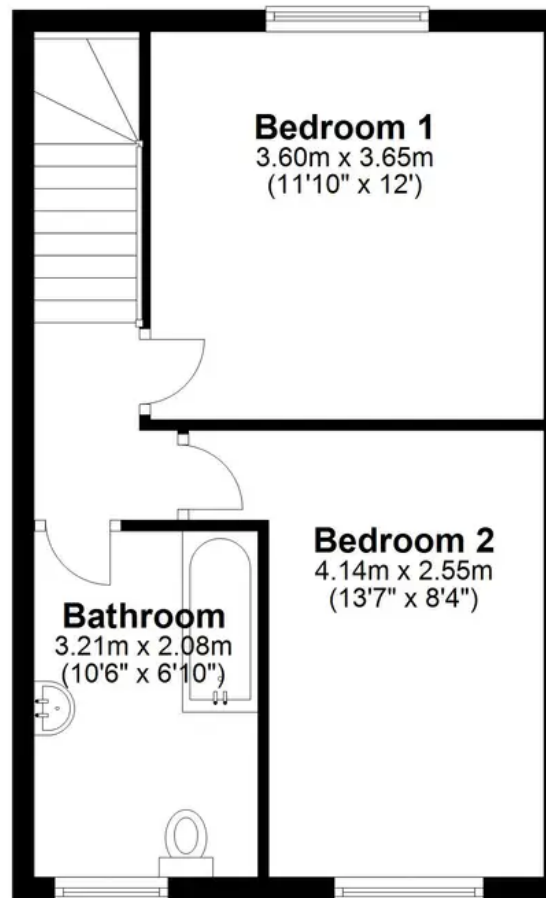
Ground Floor

Approx. 48.8 sq. metres (525.1 sq. feet)



First Floor

Approx. 37.1 sq. metres (399.0 sq. feet)



Total area: approx. 85.9 sq. metres (924.1 sq. feet)

THIS FLOOR PLAN IS FOR ILLUSTRATION ONLY AND IS NOT A SCALE DRAWING, SQFT IS AN APPROXIMATE GUIDE

Plan produced using PlanUp.