

HOME  TRUTHS

New Mill Street, Ecclestone

PR7 5FT

 £340,000



Spacious, delightful three bedroom detached property in a quiet cul de sac within easy reach of all village amenities, excellent schools and walks in the countryside this is a lovely family home. The driveway can accommodate two vehicles and a path leads off to the main entrance. Step into the hallway with oak flooring which flows into the light and airy living room. To the rear the dining kitchen has porcelain tiled flooring, a range of wall and base units and integrated appliances including refrigerator and freezer, electric hob, oven and grill, and dishwasher. A separate utility area has space, power and plumbing for additional appliances including the combi boiler, and the cloakroom comprises wc and floating wash hand basin. Step outside into the rear garden which has been perfectly designed for relaxation and entertainment with lawn, planted borders, shed and fabulous louvred pergola with privacy blinds. Back inside, stairs lead to the first floor landing with access to the loft. Bedroom one has fitted wardrobes one door of which cleverly conceals the en suite comprising mixer shower in cubicle, wc and floating wash hand basin. Bedroom two is also a double with bedroom three a comfortable single currently enjoying life as a home office. The bathroom comprises bath with screen and shower attachment, wc, floating wash hand basin and ladder heated towel rail.



Spacious, delightful three bedroom detached property in a quiet cul de sac within easy reach of all village amenities, excellent schools and walks in the countryside this is a lovely family home.

Council Tax band: D

Tenure: Freehold

- Detached property
- Three bedrooms
- Cul de sac location
- Ready to move in to
- Virtual tour
- Close to schools & amenities



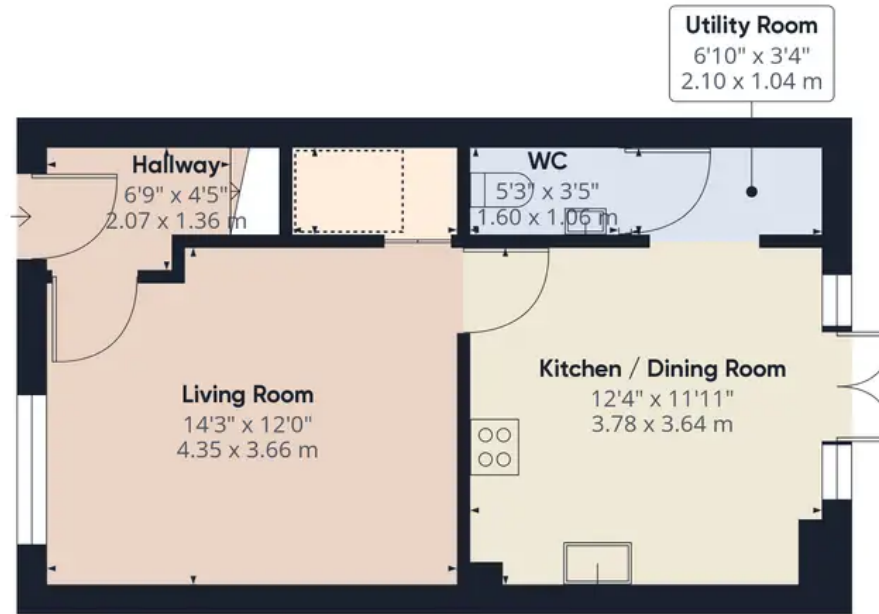
HOME  TRUTHS

Ecclestone Branch
265 The Green, Ecclestone, PR7 5TF
01257 451673

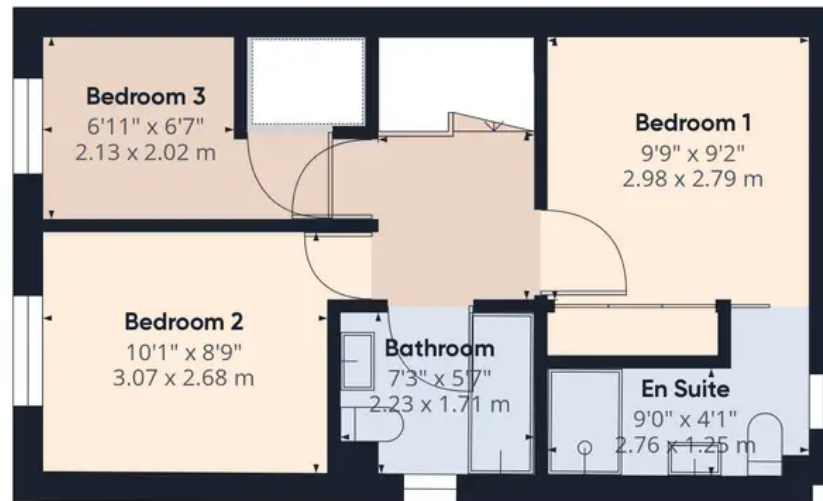
Coppull Branch
244 Spendmore Lane, Coppull, PR7 5DE
01257 794588

www.hometruthslancs.co.uk
office@hometruthslancs.co.uk





Floor 1



Floor 2

Approximate total area⁽¹⁾

797.65 ft²

74.1 m²

Reduced headroom

12.01 ft²

1.12 m²

(1) Excluding balconies and terraces

☐ Reduced headroom
(below 1.5m/4.92ft)

While every attempt has been made to ensure accuracy, all measurements are approximate, not to scale. This floor plan is for illustrative purposes only.

GIRAFFE360