

84 BURRELL STREET
CRIEFF, PERTSHIRE, PH7 4DG



IrvingGeddes
W.S. • Solicitors • Estate Agents

84 BURRELL STREET, CRIEFF PH7 4DG

Irving Geddes are delighted to offer this well presented 2 bedroom terraced cottage located centrally within the ever popular market town of Crieff. The spacious accommodation comprises; **Entrance Hallway** with stairs to first floor; large **Lounge** with a most pleasant dual aspect & patio doors leading to the enclosed garden area, with adjacent parking area, modern **fitted Kitchen** (white goods included) with door giving access to the rear garden. The upper level comprises; modern **Shower Room** & two **Double Bedrooms**. The property is double-glazed and warmed by gas central heating.

A charming property enjoying a great location. Presented in move-in condition & benefiting from off-street parking for several vehicles. Likely to have broad appeal, from first time buyers to those looking for a holiday home or investment property.

3D Tour <https://my.matterport.com/show/?m=Dr9b8hKcQuN>

Viewing Strictly by appointment through Irving Geddes W.S.

Energy Performance Band 'D'

Council Tax Rated 'D'







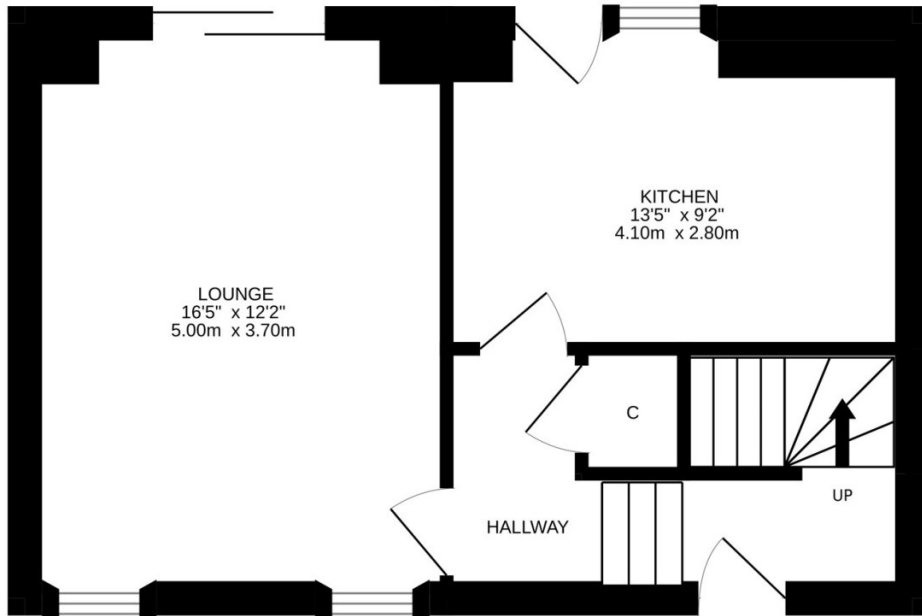
These particulars are believed to be correct, but their accuracy is not guaranteed and they do not form part of any contract. All measurements are approximate only.



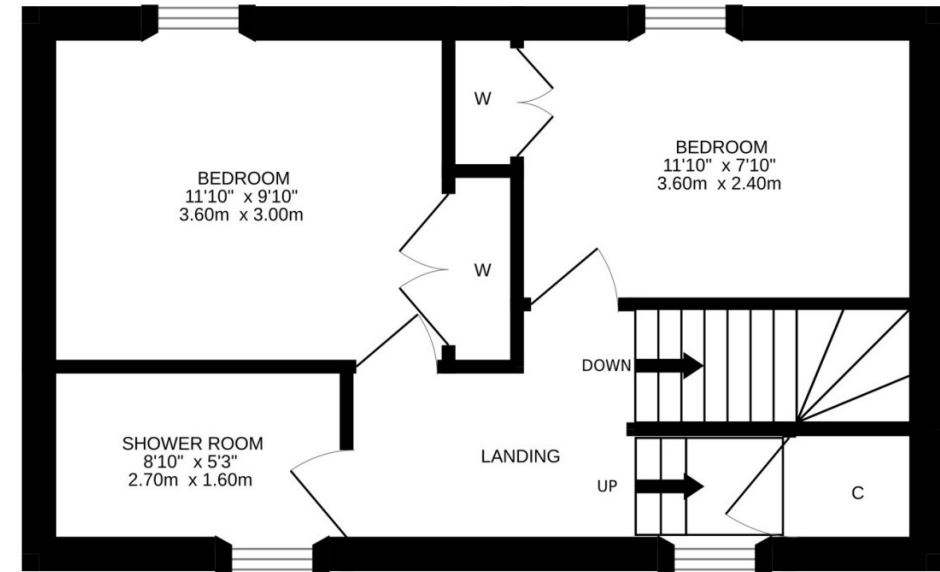




GROUND FLOOR



1ST FLOOR



Crieff
25 West High Street,
PH7 4AU

Comrie
1 Drummond Street,
PH6 2DW

Aberfeldy
6 The Square, PH15
2DD





Crieff
25 West High Street, PH7 4AU
Tel: 01764 653771

Comrie
1 Drummond Street, PH6 2DW
Tel: 01764 670325

Aberfeldy
6 The Square, PH15 2DD
Tel: 01887 822722