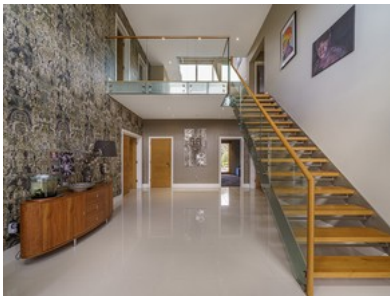


# Marlings Park Avenue Chislehurst



- ✓ 5 Bedroom Detached
- ✓ Cinema Room
- ✓ 6 Bathrooms
- ✓ Out Building | Gym
- ✓ Secure Gated Entry
- ✓ Swimming Pool
- ✓ Off Road Parking
- ✓ Stunning Entrance Hall
- ✓ West Facing Garden
- ✓ Walk In Wardrobes



Bedroom 🛏 5 Bathroom 🚿 6 Reception 🪑 3

Fixed Price

**£2,600,000**