

# 157 Lindsey Street

Epping, Essex

Offers Over £500,000

Council Tax band: D

Tenure: Freehold

- CHAIN FREE
- SOUTH FACING GARDEN
- OFF ROAD PARKING
- STUNNING VIEWS
- NEEDS MODERNISATION
- OUT BUILDING IN GARDEN
- POTENTIAL TO EXTEND
- THREE BEDROOM PERIOD COTTAGE



**Lounge/ Diner**  
23' 3" x 15' 4" (7.08m x 4.67m)

**Kitchen**  
9' 2" x 7' 9" (2.79m x 2.35m)

**Bathroom**  
10' 3" x 7' 9" (3.13m x 2.35m)

**Utility Area**

**First Floor**

**Bedroom One**  
15' 4" x 13' 8" (4.67m x 4.16m)

**Bedroom Two**  
12' 8" x 9' 0" (3.85m x 2.75m)

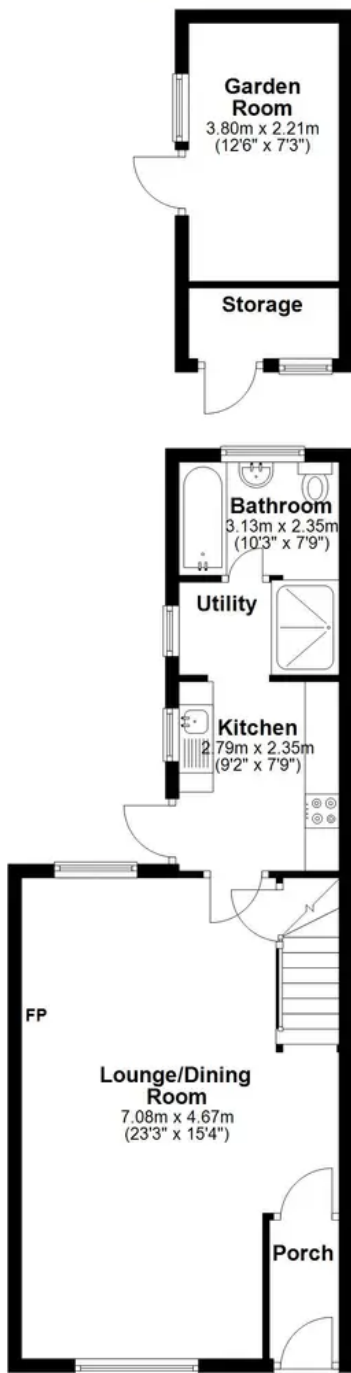
**Bedroom Three**  
9' 1" x 7' 9" (2.76m x 2.35m)





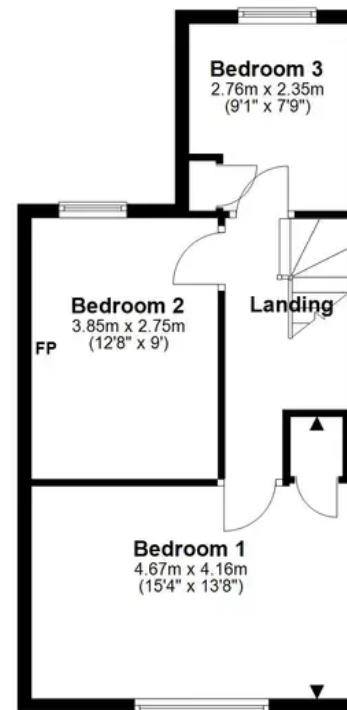
### Ground Floor

Approx. 58.7 sq. metres (631.6 sq. feet)



### First Floor

Approx. 40.0 sq. metres (430.4 sq. feet)



Total area: approx. 98.7 sq. metres (1061.9 sq. feet)