



- Idyllic Period Stone Cottage
- Sympathetically Modernised Keeping Original Features and Charm
- Accommodation Set Over Four Floors
- Grade II Listed in Quiet Conservation Area of Eagley
- Lounge with Log Burning Stove / Dining Kitchen
- Converted Cellar - Home Office & Utility
- Three Double Bedrooms
- Large Bathroom with 4-Piece Suite
- Rear Courtyard & Front Garden
- Parking to Rear

27 Park View, Bolton, BL1 7LE

Welcome to Park View...

A wonderful Grade II listed stone home, nestled in Eagley Bank Conservation Area; a beautiful location renowned for its heritage and community spirit. This property has been lovingly modernised by the current owners, while retaining all the traditional charm and character, including solid wooden floors, timber sash windows, Victorian door handles and cast iron fireplaces. With a cosy lounge, dining kitchen, converted cellar with home office and utility area, three double bedrooms, a luxuriously large 4-piece bathroom, as well as a rear courtyard, front garden and space to park two cars to the rear. Viewing is highly recommended to appreciate all that this home has to offer!

A Closer Look...

Step through the front door into the entrance hallway, where solid wooden floors lead you past handy in-built storage and into the lounge. A bright and airy room with a Morso log burning stove housed in a rustic stone fireplace, and attractive alcoves with bespoke shelving and cupboards. To the rear of the home, the dining kitchen offers generous space for a dining table alongside the oak base and wall units with granite worktops. Slate tiled floors and a cast iron traditional radiator offer an aesthetic nod to the property's heritage. There is an integrated fridge and a fabulous stainless-steel Smeg range cooker with 6-ring gas hob and extractor hood, and there's also plumbing for an integrated dishwasher. A part-glazed door leads to the rear courtyard. Take the original stone stairs down to the converted cellar, which currently acts as a spacious dedicated home office, and has sliding partition doors to a utility area with plumbing for a washer, dryer and fridge freezer, as well as lots of additional storage.

Bed and Bath...

On the first floor, you'll find the master bedroom with views over the front garden and walk-in wardrobe storage, and a large 4-piece bathroom with a freestanding bath taking centre stage with a lovely cast iron fireplace to one wall. A large walk-in shower, pedestal basin, W.C. and traditional heated towel radiator complete the bathroom.

To the second floor, there are two further well-sized double bedrooms, one of which benefits from fitted wardrobes and walk-in storage with bookshelves that also provides access to the loft.

Outside Oasis...

To the rear, there is a private rear courtyard, with a wooden pedestrian gate offering access to the parking behind the property. To the front of the home, through a rose arch, is the garden with raised sleeper beds, lawns and a block paved patio. As part of the conservation area, these front gardens which used to be allotments for the workers in the local mill, provide an attractive and unique focal point for the neighbourhood.

The Location...

Eagley Bank is a delightful conservation area with a great community, well known for its attractive stone cottages and acknowledged as an area of high residential demand. The area is tucked away from the hustle and bustle yet conveniently located for transport links to Bolton Town Centre and close to excellent amenities including shops, schools and leisure facilities. As the cottages on Park View are Grade II listed, the charm and character of this delightful setting will remain unchanged for years to come.

£345,000

www.williamthomasstates.co.uk

454 Darwen Road, Bromley Cross, Bolton, BL7 9DX

Front Elevation

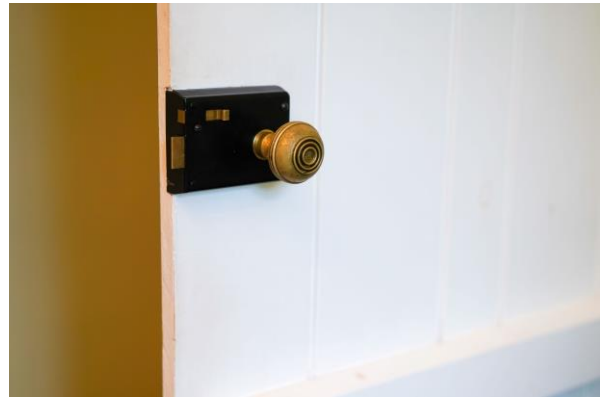


Entrance Hallway



Lounge





Kitchen



Kitchen Additional Pictures



Cellar

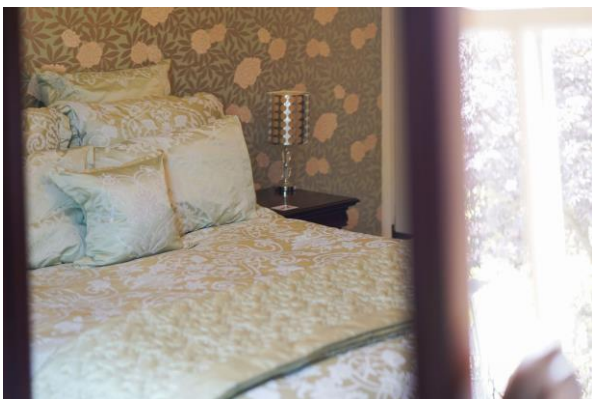




First Floor



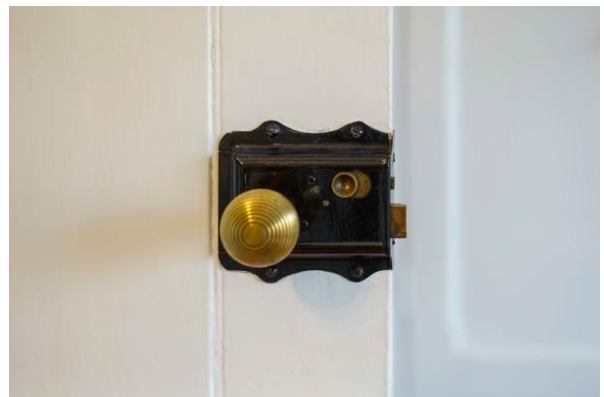
Master Bedroom



Bathroom



Bathroom Additional Pictures



Second Floor

Bedroom 2



Bedroom 3





Rear Courtyard



Garden

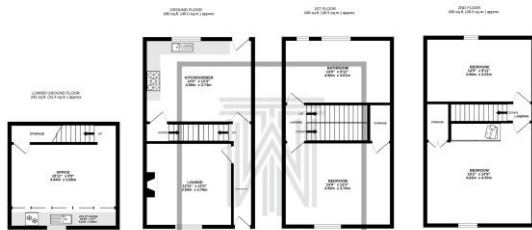




Additional External Pictures



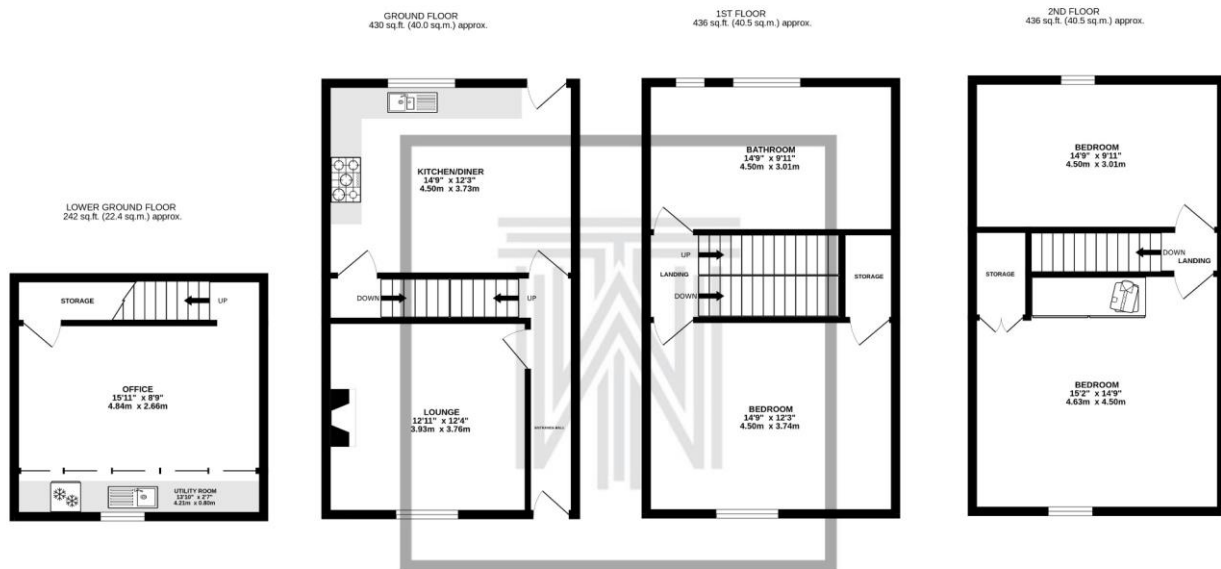
Floorplan



27 PARK VIEW - MARKETED BY WILLIAM THOMAS ESTATE AGENTS
TOTAL FLOOR AREA: 1564 sq. ft. (143.5 sq.m.) approx.
When every attempt has been made to ensure the accuracy of the floorplan contained herein, measurements of areas, volumes, masses and other data have been taken and approximations only to be used for general guidance only. The floorplan is not intended to be used as a basis for any legal proceedings or other purposes. The services, systems and appliances shown hereon have not been tested and no guarantee as to their operation or efficiency can be given.
Issue with Ref: 2023-0001

Agents Notes

William Thomas Estates for themselves and for vendors or lessors of this property whose agents they are given notice that: (i) the particulars are set out as a general outline only for the guidance of intended purchasers or lessees and do not constitute nor constitute part of an offer or a contract. (ii) all descriptions, dimensions, reference to condition and necessary permissions for use and occupation and other details are given without responsibility and any intending purchasers or tenants should not rely on them as statements or representations of fact but must satisfy themselves by inspection or otherwise as to the correctness of each of them (iii) no person in the employment of William Thomas Estates has authority to make or give any representations or warranty whatever in relation to this property



27 PARK VIEW - MARKETED BY WILLIAM THOMAS ESTATE AGENTS

TOTAL FLOOR AREA : 1544 sq.ft. (143.5 sq.m.) approx.

Whilst every attempt has been made to ensure the accuracy of the floorplan contained here, measurements of doors, windows, rooms and any other items are approximate and no responsibility is taken for any error, omission or mis-statement. This plan is for illustrative purposes only and should be used as such by any prospective purchaser. The services, systems and appliances shown have not been tested and no guarantee as to their operability or efficiency can be given.
Made with Metropix ©2024