

77 FORTRESS ROAD

KENTISH TOWN, NW5 1AG

FOREST
REAL ESTATE

TO LET

2,840 SQ FT

Open plan office space suitable for a variety of occupiers under use class E.

Key Features

- 1 parking space
- Use class E
- Gas heating
- Communal loading area
- No VAT
- Open plan
- 3m ceiling heights
- Private Kitchenette
- Wooden flooring

77 Fortess Road
Kentish Town, NW5 1AG





Description

Forest Real Estate are now marketing this rustic office space located within in a quiet mews in Kentish Town.

This property is suitable for a variety of occupiers who fall with use class E, ranging from media, leisure occupiers and more.

The premises is largely open plan with wooden flooring and plenty of natural light wrapping round the building.

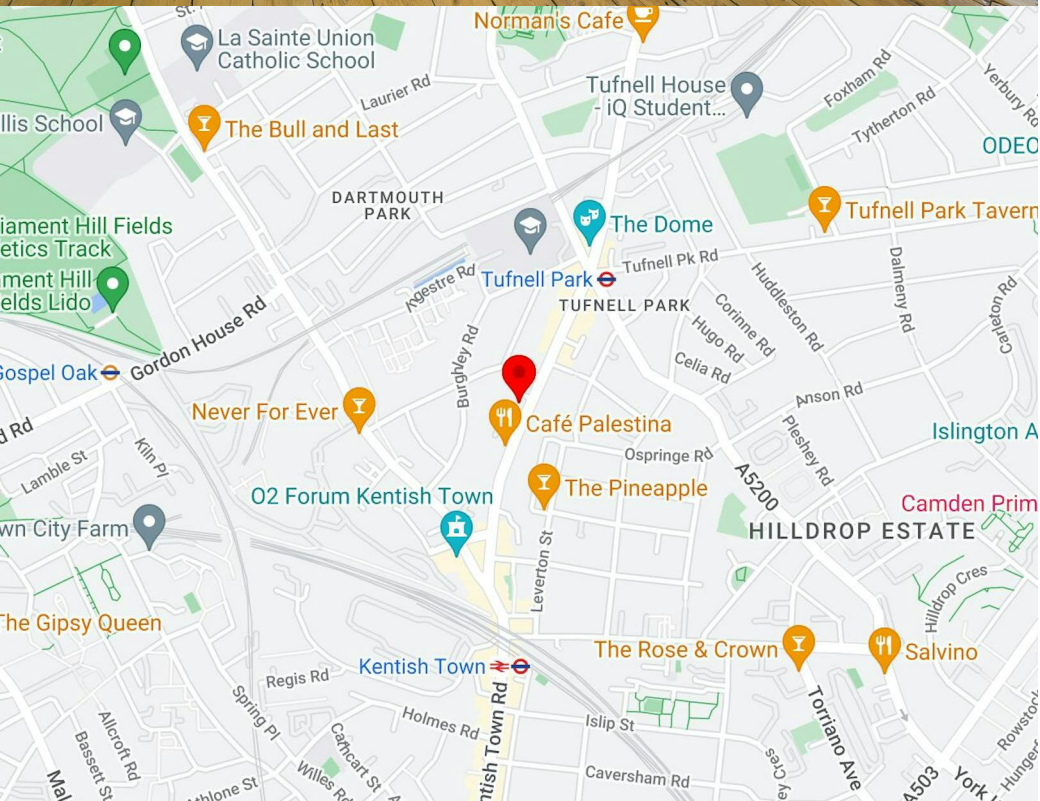
All users would also benefit from a kitchenette and two WCs, as well as a communal loading area.

There is one parking space included.

Location

This office is located within an 8 minute walk of Kentish Town Station and a 5 minute walk from Tufnell Park Station providing great access to the Northern line.

The vibrant area is surrounded by a number of bars, café's, and restaurants and other amenities.





Availability

Lease New Lease

Rent £75,260 per annum

Rates £19,710.50 per annum

Service Charge £5,822 per annum

VAT Not applicable

EPC D (89)

Contact

Cormac Sears

020 3355 1555 | 07788 235 185

cormac@forestrealestate.co.uk

Ethan Shine

020 3355 1555 | 07792 781 096

ethan@forestrealestate.co.uk

North West London Office

1 Bridge Lane, London, NW11 0EA

020 3355 1555

Watford Office

1a Local Board Road, Watford, WD17 2JP

01923 911 007

East London Office

55 St John Street, London, EC1M 4AN

020 3370 4470

www.forestrealestate.co.uk

info@forestrealestate.co.uk

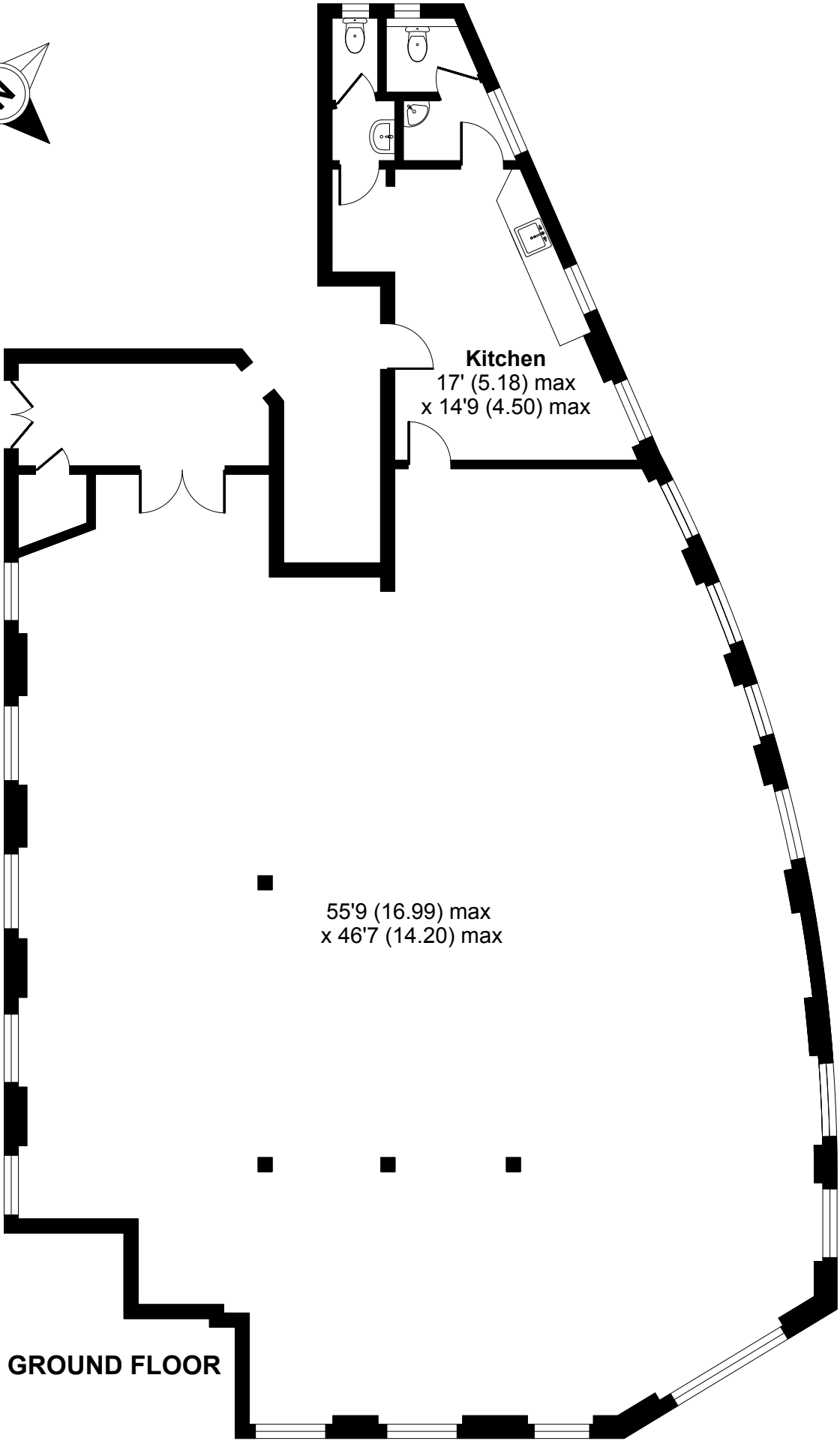
77 Fortess Road
Kentish Town, NW5 1AG

F O R E S T
REAL ESTATE

The above information contained within this brochure is subject to contract. These particulars are for general information only and do not constitute any part of an offer or contract. All statements contained therein are made without responsibility on the part of the vendors or lessors and are not to be relied upon as statement or representation of fact. Intending purchasers or lessees must satisfy themselves, by inspection, or otherwise, as to the correctness of each of the statements of dimensions contained in these particulars. Generated on 14/10/2024

Fortess Road, London, NW5

For identification only - Not to scale



GROUND FLOOR



Floor plan produced in accordance with RICS Property Measurement Standards incorporating International Property Measurement Standards (IPMS2 Residential). © nitchecom 2024. Produced for Forest Real Estate Limited. REF: 1148188