



Lemsford Road, Hatfield – AL10 0DZ

£350,000 Freehold

MID TERRACE HOUSE • THREE BEDROOMS • LIVING ROOM WITH BAY WINDOW • KITCHEN/DINER • SUNROOM • GARAGE TO REAR • WALKING DISTANCE TO AMENITIES • CHAIN FREE • FREEHOLD • EPC RATING – TBC

KINGS
SALES LETTINGS MANAGEMENT



Situated near to many local amenities including Hatfield Town Centre, The Galleria and the Business Park is this three bedroom freehold house offered for sale on a chain free basis. The ground floor comprises an inviting entrance hall with under stair storage, living room with bay window overlooking a pretty front garden, separate kitchen/diner with breakfast bar and fireplace and a sunroom. The first floor features a spacious master bedroom with bay window, second double bedroom with fitted storage, third single bedroom, landing with over-stair storage and a family bathroom. This home further benefits from a West facing rear garden with patio and lawn areas with established plants, flowers and trees, front garden which could be converted into a driveway subject to the necessary permissions and consents and a garage to the rear of the plot.

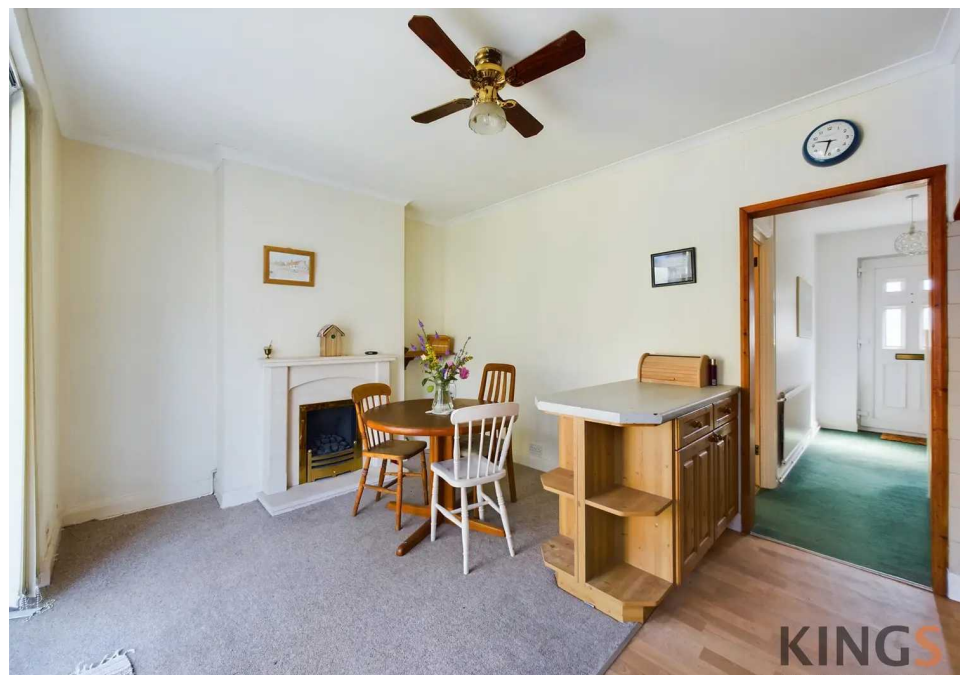
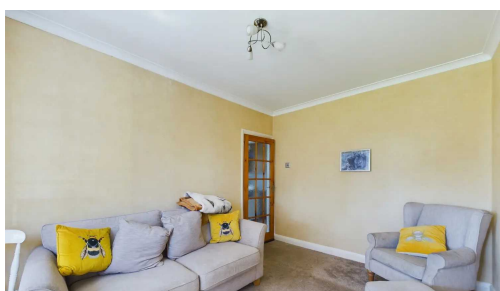
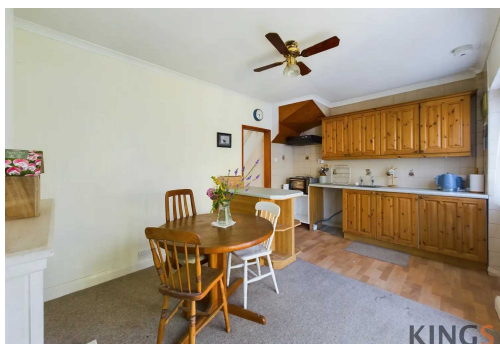


Council Tax band: D

Tenure: Freehold

EPC Energy Efficiency Rating:

EPC Environmental Impact Rating:



KINGS
SALES, LETTINGS, MANAGEMENT



Ground Floor



Floor 1

Approximate total area⁽¹⁾
764.78 ft²
71.05 m²

(1) Excluding balconies and terraces

While every attempt has been made to ensure accuracy, all measurements are approximate, not to scale. This floor plan is for illustrative purposes only.

GIRAFFE360

