

# 1 Lysander Court High Street

North Weald, Essex

Guide Price £575,000

Beautifully sleek and serene, welcome to this three bedroom home in much-loved North Weald.

Completely move-in ready- show home worthy even - this is a property that shines.

Council Tax band: F

Tenure: Freehold

- GARAGE AND DRIVEWAY PARKING
- RENOVATED TO AN EXCEPTIONAL STANDARD THROUGHOUT
- DOWNSTAIRS BEDROOM AND BATHROOM
- TWO ENSUITE BATHROOMS
- CORNER PLOT GARDEN
- SHORT WALK TO LOCAL SHOPS



**Bedroom / Snug**

10' 10" x 11' 5" (3.30m x 3.48m)

**Dining room**

9' 7" x 12' 6" (2.92m x 3.81m)

**Kitchen**

7' 7" x 12' 6" (2.31m x 3.81m)

**Lounge**

21' 5" x 13' 3" (6.53m x 4.04m)

**Downstairs Bathroom**

**Bedroom 1**

15' 4" x 12' 5" (4.67m x 3.78m)

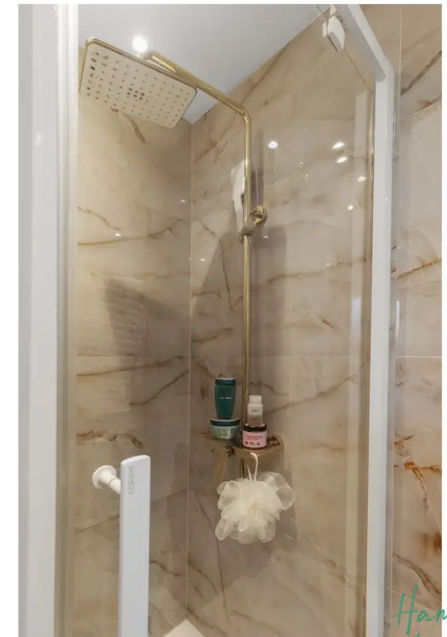
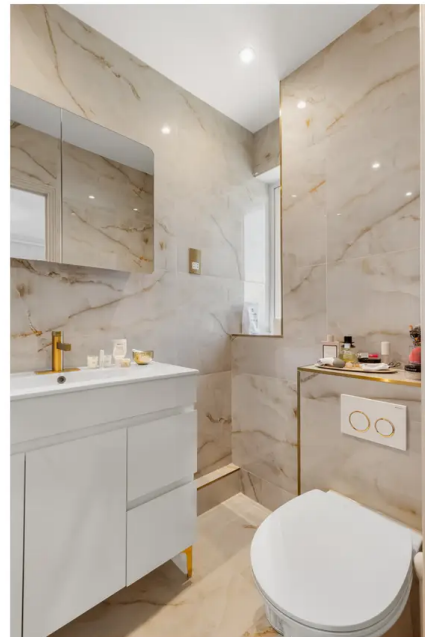
**En-suite**

**Bedroom 2**

10' 10" x 12' 2" (3.30m x 3.71m)

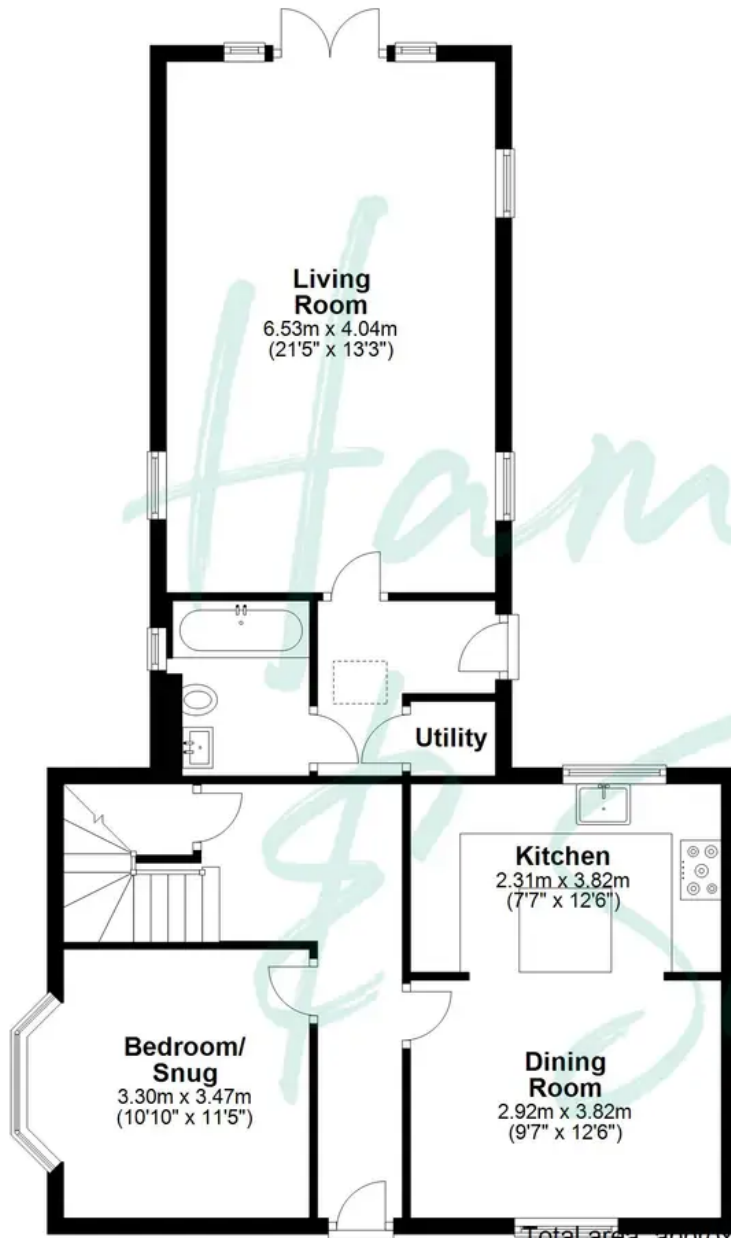
**En-Suite**





## Ground Floor

Approx. 79.3 sq. metres (853.2 sq. feet)



## First Floor

Approx. 43.1 sq. metres (464.0 sq. feet)



## Garage

Approx. 14.0 sq. metres (150.2 sq. feet)



Total area. approx. 136.3 sq. metres (1467.4 sq. feet)

FOR ILLUSTRATIVE PURPOSES ONLY. NOT TO SCALE. Whilst every attempt had been made to ensure the accuracy of the floor plan shown, all measurements, positioning, fixtures, features, fittings and any other data shown are an approximate interpretation for illustrative purposes only and are not to scale. No responsibility is taken for any error, omission, miss-statement or use of data shown.