



96 Hare Moss View, Whitburn

Offers Over £275,000



96 Hare Moss View

Whitburn, Bathgate

Hare Moss View presents a delightful opportunity to acquire a meticulously maintained 4-bedroom detached home in pristine condition, offering serene surroundings and ample living space. This property exudes modern elegance and convenience, boasting a double driveway and a single garage for added convenience. Located in Whitburn, this charming residence is designed to provide a comfortable and contemporary lifestyle. This home represents a harmonious blend of modern comfort and timeless elegance. With its well-appointed living spaces, serene surroundings, and convenient amenities, this property offers an ideal setting for creating cherished memories and embracing the essence of contemporary living in Whitburn.

Council Tax band: E

Tenure: Freehold

EPC Energy Efficiency Rating: B

EPC Environmental Impact Rating: C



Welcome to Hare Moss View, where modern elegance meets comfortable living. Step into the bright and spacious lounge, where comfort seamlessly blends with elegance. Bathed in natural light, this inviting space welcomes guests and offers ample room for relaxation and entertainment.

The heart of the home, the shaker-style kitchen, is a chef's delight. Boasting dining space and equipped with integrated oven and hob, this culinary haven combines functionality with style. French doors lead out to the rear garden, creating a seamless indoor-outdoor flow.

Convenience meets practicality with the well-appointed utility room on the ground floor, enhancing everyday living and adding to the home's overall functionality. Also on the ground floor, a modern WC with half-height tiling provides added convenience.

Ascending to the upper floor, you're greeted by a bright and welcoming landing that seamlessly connects to the four well-proportioned bedrooms and the main bathroom, serving as a central hub for easy access to various areas of the home.

Positioned at the front of the property, bedroom one enjoys abundant natural light and boasts fitted wardrobes. A neutrally decorated en-suite shower room adds to the allure of this serene retreat. Bedrooms two and three offer generous proportions and further space for free-standing furnishings. Versatile bedroom four currently serves as a home office but offers flexibility to suit individual needs, whether as a nursery, dressing room, or personalized space.

This property at Hare Moss View seamlessly blends modern comfort with practical living, offering a serene retreat for its fortunate inhabitants.





Approximate Gross Internal Area = 109.8 sq m / 1182 sq ft

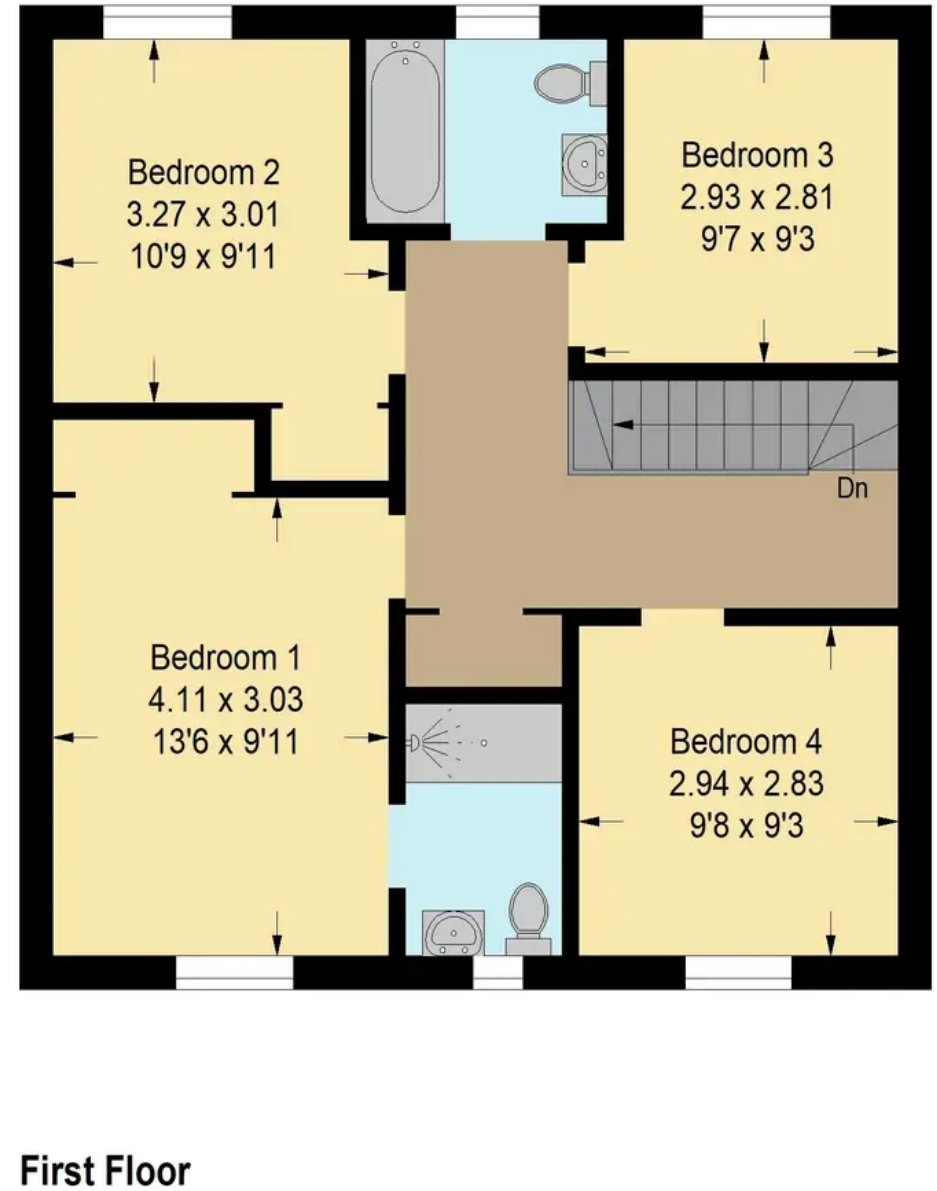
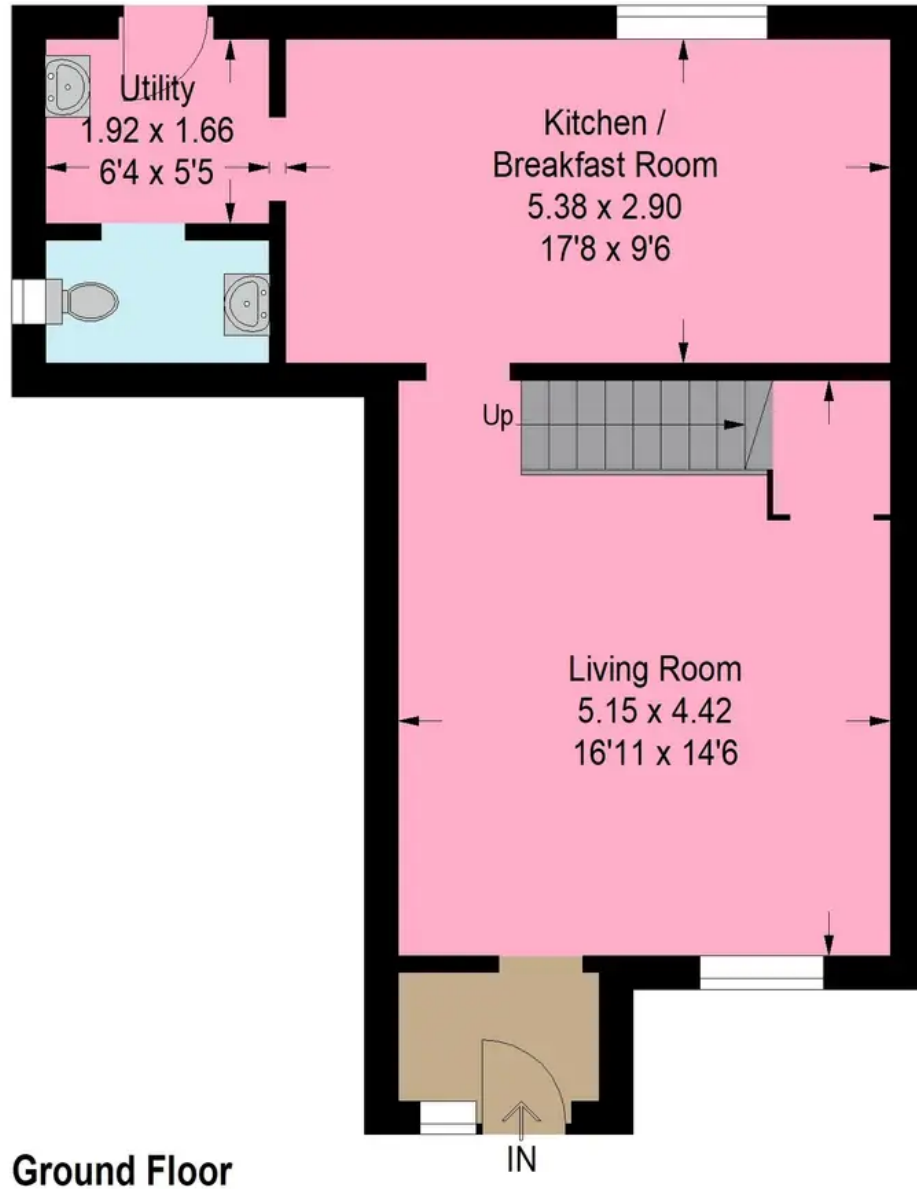


Illustration For Identification Purposes Only. Not To Scale (ID:1048424 / Ref:87154)



Bridges Properties

94 West Main Street, Whitburn - EH47 0QU

01501519435

info@bridges-properties.co.uk

www.bridges-properties.co.uk/

