



17 Lodge Close, Middleton-on-Sea

Desirable three bedroom detached home in Middleton-on-Sea.



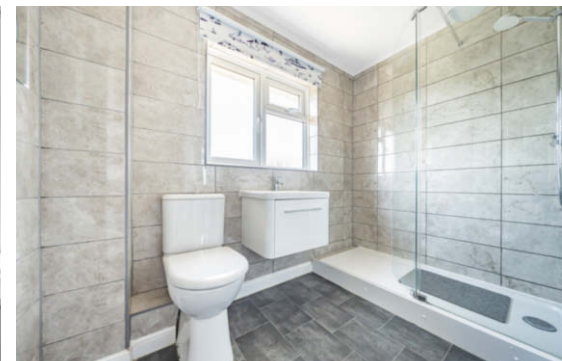
- ▶ Detached House
- ▶ Kitchen/Dining Room
- ▶ Cloakroom/WC
- ▶ Shower Room/WC
- ▶ Integral Garage and Driveway
- ▶ Sitting Room
- ▶ Conservatory
- ▶ Three Bedrooms
- ▶ South Facing Garden
- ▶ 1,033 Sqft

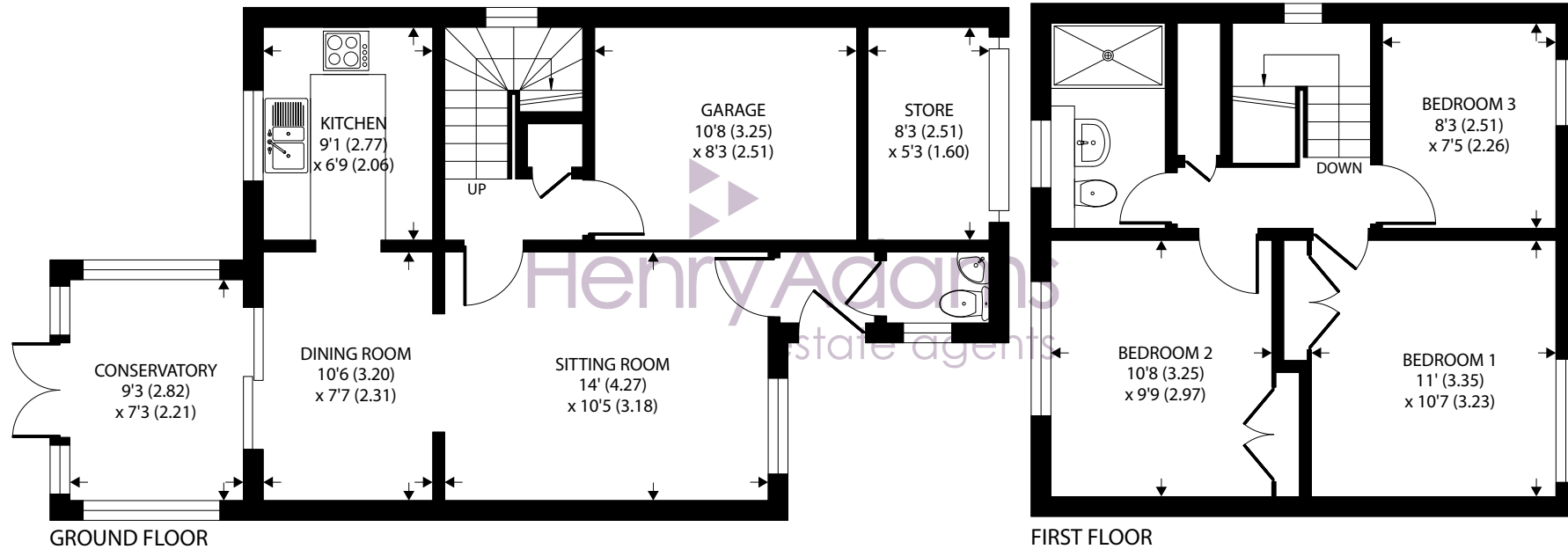
Nestled within a sought-after cul-de-sac in Middleton-on-Sea, this pristine three bedroom detached residence presents an ideal location within walking distance of the beach and local conveniences.

Internally, the property spans 1,033 sqft and comprises a well-appointed kitchen/dining room featuring a selection of contemporary units, an integrated cooker and hob, as well as space for a washing machine. This area also provides access to the conservatory and the attractive garden beyond. A bright and airy sitting room, along with a convenient ground floor cloakroom/WC will also be found on this level. Off of the inner hall is access to the integral garage and the staircase which leads to the first floor where all three bedrooms are situated. Bedrooms one and two are equipped with fitted wardrobes, with the stylish family shower room completing the upper level.

Externally, a driveway at the front offers off-road parking and access to the garage, while the rear garden enjoys a southerly aspect and comprises a blend of lawn and patio with plant and shrub borders and a storage shed.

Council Tax Band: D





Approximate Area = 883 sq ft / 82 sq m

Garage & Store = 150 sq ft / 13.9 sq m

Total = 1033 sq ft / 95.9 sq m

For identification only - Not to scale



Agents Note - Our particulars are for guidance only and are intended to give a fair overall summary of the property. They do not form part of any contract or offer, and should not be relied upon as a statement or representation of fact. Measurements, areas and distances are approximate only. Photographs may include lifestyle shots and pictures of local views. No undertaking is given as to the structural condition of the property, or any necessary consents or the operating ability or efficiency of any service, system or appliance. Please ask if you would like further information, especially before you travel to the property.

Location

The charming village of Middleton-on-Sea offers a wide range of local facilities including a doctors surgery, pharmacy, sports/social club, post office and a range of other useful shops. Nearby attractions include Bognor Regis golf club, sailing club and an unspoilt beach. Historic Arundel, the cathedral city of Chichester and the famous Goodwood motor circuit and racecourse can all be found within approximately eleven mile radius.

What3Words ///grows.accompany.stiff

19/08/24



To arrange a viewing call **01243 587687** View details online at henryadams.co.uk