




Andrew Pearce
PINNER

WAKEHAMS HILL, PINNER, MIDDLESEX HA5 3BQ



Discover this exquisite, modern built detached family home nestled in an idyllic setting. Boasting five bedrooms and four bathrooms, this residence offers contemporary luxury living. Key features include the remainder of a 10-year LABC warranty, underfloor heating, CCTV, and an alarm system.

The gated entrance leads to beautifully landscaped gardens, while a bespoke oak staircase adds elegance. With planning permission for a sixth and seventh bedroom in the loft, this architect-designed home is within walking distance of Pinner Village. Viewing is highly recommended."

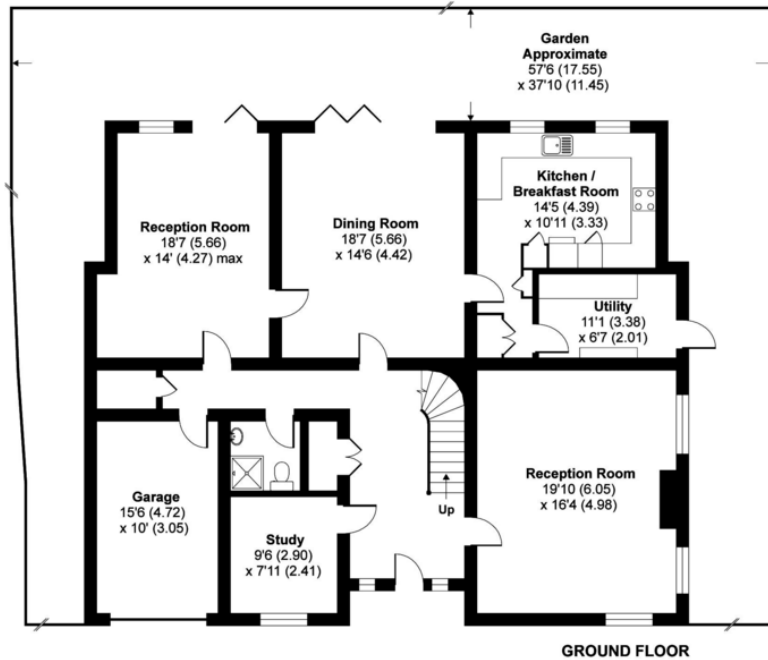
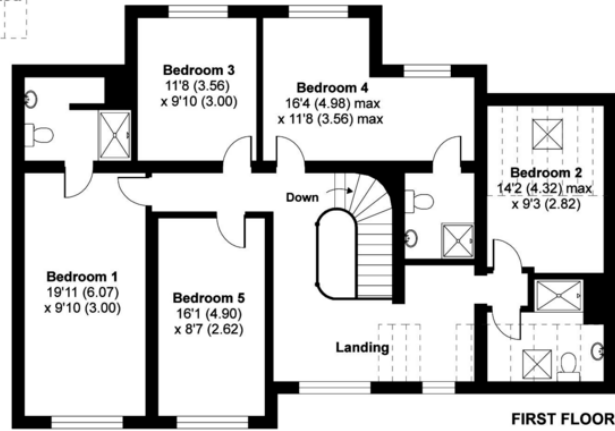
- Remainder of the LABC Warranty
- Underfloor Heating
- CCTV and alarm system
- Gated Entrance
- Landscaped gardens
- Bespoke Oak Stair Case
- Planning for a Sixth and Seventh bedroom in the Loft
- Walking distance to Pinner Village
- Exquisitely finished
- Architect Designed
- Viewing Recommended



Wakehams Hill, Pinner, HA5

APPROX. GROSS INTERNAL FLOOR AREA 2908 SQ FT 270.1 SQ METRES
(EXCLUDES RESTRICTED HEAD HEIGHT & INCLUDES GARAGE)

Denotes restricted head height



Whilst every attempt has been made to ensure the accuracy of the floor plan contained here, measurements of doors, windows and rooms are approximate and no responsibility is taken for any error, omission or misstatement. These plans are for representation purposes only as defined by RICS Code of Measuring Practice and should be used as such by any prospective purchaser. Specifically no guarantee is given on the total square footage of the property if quoted on this plan. Any figure given is for initial guidance only and should not be relied on as a basis of valuation.

Copyright nichecom.co.uk 2019 Produced for Andrew Pearce REF : 477745



