

# Manor House, North Ferriby

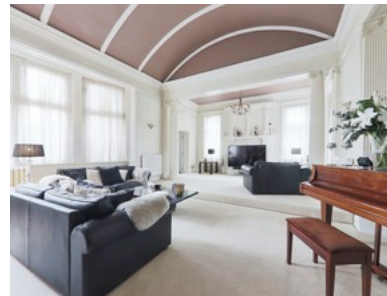
## Offers Between £330,000 - £340,000

**beercocks**  
valuing people, not just houses



[Check out the video!](#)

- ❖ Luxury Ground Floor Garden Apartment
- ❖ Stunning Original Features With A Private Entrance
- ❖ A Superb Open Plan Living Space
- ❖ Two Bedrooms And Two Bathrooms
- ❖ Approximately 1300 Sq Ft Of Living Space
- ❖ Private South-facing Terrace
- ❖ Communal Parking Available
- ❖ Leasehold
- ❖ Council Tax Band E
- ❖ Epc E



Bedroom 2 Bathroom 2 Reception 1

Guide Price

**£330,000**