



MILE



mile...
estate agents



mile...
estate agents



mile...
estate agents



mile...
estate agents

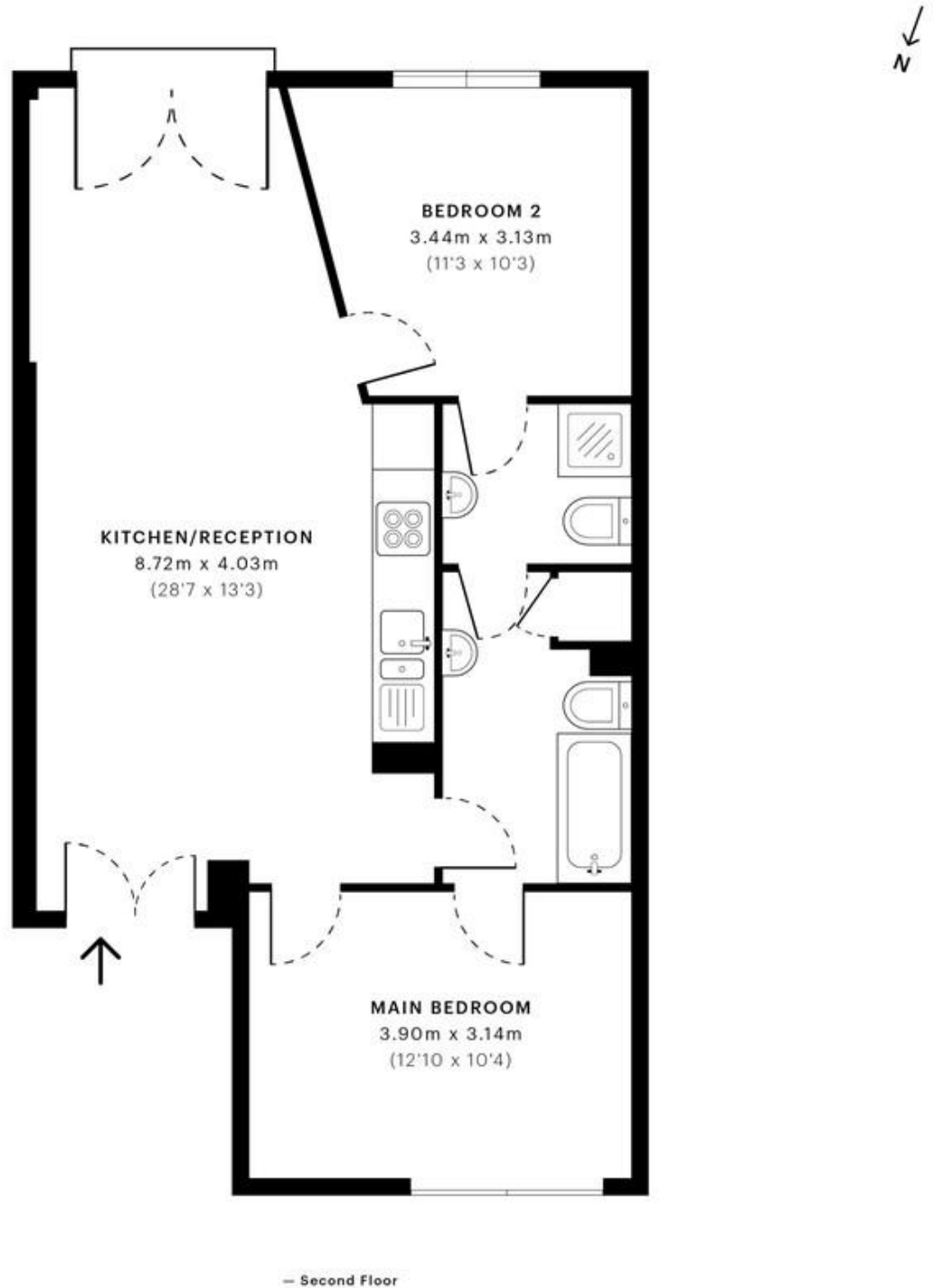
Noko, Banister Road, London W10

£2,000 pcm

Located in an amazing spot, this apartment is a short walk to the lush green spaces of Queens Park, providing a perfect escape for nature lovers. The property features double-glazed windows, ensuring a quiet and energy-efficient environment.

Available from September 2nd, 2024, this home is nestled in a great location close to shops and transport links, offering unparalleled convenience. Don't miss out on this opportunity to reside in a prime location with all the amenities you need at your doorstep.

- Secure block
- Fantastic two bedroom apartment
- Second floor
- Two double bedroom
- Great location
- Short walk to green space of Queens Park
- Amazing location
- Available 2nd September 2024
- Double glazed windows
- Close to shops and transports



GROSS INTERNAL AREA (GIA)
The footprint of the property
62.16 sqm / 669.08 sqft

NET INTERNAL AREA (NIA)
Excludes walls and external features
Includes washrooms, restricted head height
60.20 sqm / 647.99 sqft

EXTERNAL STRUCTURAL FEATURES
Balconies, terraces, verandas etc.
0.00 sqm / 0.00 sqft

RESTRICTED HEAD HEIGHT
Limited use area under 1.5 m
0.00 sqm / 0.00 sqft

Spec Verified floor plans are produced in accordance with

IPMS 3B RESIDENTIAL 62.16 sqm / 669.08 sqft

MONEY LAUNDERING REGULATIONS 2003: Intending purchasers will be asked to produce identification documentation at a later stage and we would ask for your co-operation in order that there will be no delay in agreeing the sale.

General: While we endeavour to make our sales particulars fair, accurate and reliable, they are only a general guide to the property and, accordingly, if there is any point which is of particular importance to you, please contact the office and we will be pleased to check the position for you, especially if you are contemplating travelling some distance to view the property.

Measurements: These approximate room sizes are only intended as general guidance. You must verify the dimensions carefully before ordering carpets or any built-in furniture.

Services: Please note we have not tested the services or any of the equipment or appliances in this property, accordingly we strongly advise prospective buyers to commission their own survey or service reports before finalising their offer to purchase.