



20 Austral Close, Sidcup, Kent, DA15 7LE
£2,100 pcm



Austral Close

Sidcup, DA15 7LE

Spacious Three Bedroom Detached House Just A Short Walk To Sidcup Station: UNFURNISHED

Main Features

- CLOSE TO SIDCUP STATION
- LINK DETACHED HOUSE
- GARAGE
- DOUBLE GLAZING
- LARGE LOUNGE/DINER
- GAS CENTRAL HEATING
- DRIVEWAY
- SITUATED IN A QUIET CLOSE

DESCRIPTION

A spacious three bedroom detached house situated in a quiet residential close just off of Longlands Road just a short walk to Sidcup train station, local shops, bus routes, Sidcup High Street, restaurants, cinema and sought after schools. The property itself benefits from gas central heating, double glazing and neutral décor throughout.

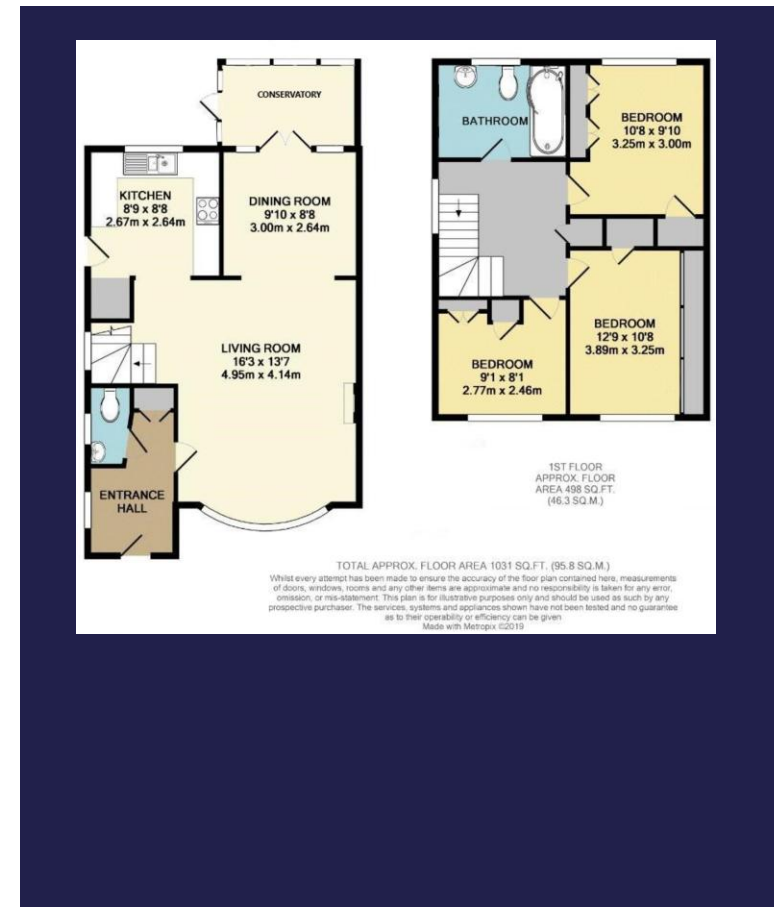
Internally the property briefly comprises of an entrance porch with a ground floor w/c, spacious lounge, dining area which is open to the lounge with patio doors to the rear garden, con kitchen, three well proportioned bedrooms with the master benefitting from large built in wardrobes and finally a spacious family bathroom with heated towel rail.

Externally the property has a rear garden with garden shed, garage and driveway offering off road parking to the front.

Available immediately. Restrictions: no pets, smokers, students, or sharers.

Council Tax Band - E (£2,633.94)
Rent - £2,100.00 Per Calendar Month
Security Deposit - £2,423.07

Score	Energy rating	Current	Potential
92+	A		
81-91	B		85 B
69-80	C		
55-68	D	65 D	
39-54	E		
21-38	F		
1-20	G		



128, Station Road, Sidcup, DA15 7AF

Tel: 020 8269 6600

E: info@drewery.co.uk www.drewery.co.uk



These particulars are intended to give a fair description of the property but their accuracy cannot be guaranteed. Intending tenants should not rely on them as statements of representation of fact, but must satisfy themselves by inspection or otherwise as to their accuracy. All measurements quoted are approximate. None of the appliance/services have been tested by ourselves.

*Important – Admin fees apply per applicant. Please visit our website www.drewery.co.uk (information for tenants – Fees & other costs) or contact our staff.