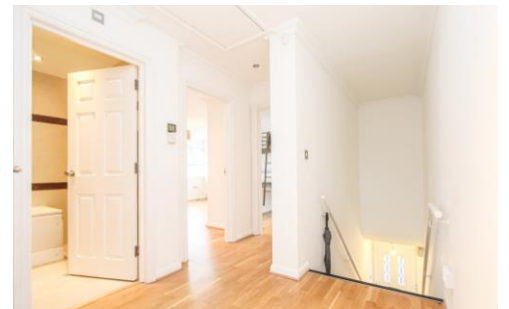


MAGICBRICK

ESTATE AGENTS



Walton Avenue,
Harrow, HA2 8FH

Offers In Excess Of £350,000

Property Summary

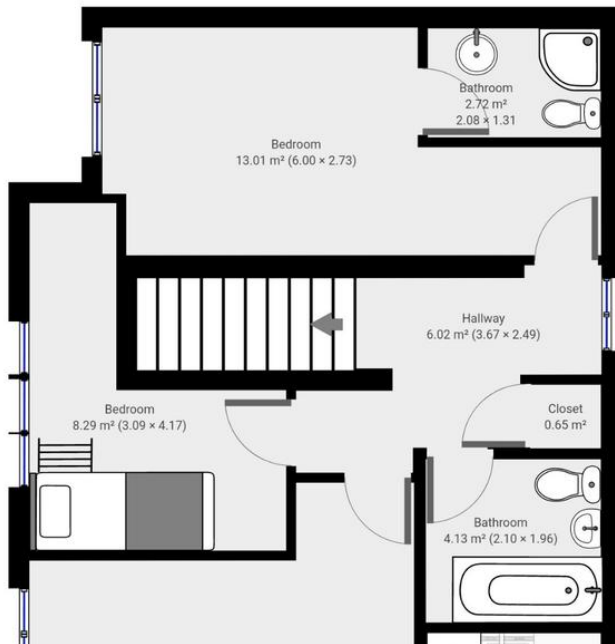
Magicbrick are pleased to present this bright and spacious two-bedroom first floor maisonette. The property briefly comprises of a lounge, kitchen, two good size bedrooms, modern bathroom suite and en-suite shower room. The property benefits from double glazing, boarded loft area, gas central heating, long lease, 'Yale' security system, communal garden and off-street parking. Chain Free.



Walton Avenue - 2

TOTAL AREA:58.33 m2 • LIVING AREA:58.33 m2 • FLOORS:1 • ROOMS:4

Score	Energy rating	Current	Potential
92+	A		
81-91	B		
69-80	C	79 C	79 C
55-68	D		
39-54	E		
21-38	F		
1-20	G		



- Two Double Bedrooms
- Two Bathrooms
- First Floor Maisonette
- Close to Schools
- Close to Transport Links
- Close to Local Amenities
- Allocated Parking for One Car
- Communal Garden
- Leasehold
- Chain Free

432 Alexandra Avenue
Harrow
Middlesex
HA2 9TW

www.magicbrick.co.uk
sales@magicbrick.co.uk
0208 004 4225

Agents Note: Whilst every care has been taken to prepare these sales particulars, they are for guidance purposes only. All measurements are approximate and for general guidance purposes only and whilst every care has been taken to ensure their accuracy, they should not be relied upon and potential buyers are advised to recheck the measurements