

Love Homes



Trent Avenue, Flitwick, Bedfordshire MK45 1SH

This three-bedroom semi-detached house is ideally located in a sought-after cul-de-sac within walking distance of Flitwick town center, the train station, and reputable schools. Features include a downstairs cloakroom, an open-plan living/dining area with patio doors to the rear garden, three upstairs bedrooms, a modern bathroom, an integral garage (potential for conversion), and a driveway. The south/westerly rear garden offers extensive patio seating, perfect for outdoor dining and entertaining. Flitwick Woods and open countryside are nearby, ideal for dog walkers.



This property is presented by Duncan Stead - a Love Homes property expert with over 25 years' experience.

Find out more about this property by scanning the QR code.



0.6m

Tenure: Freehold



3



1

Council Tax: C

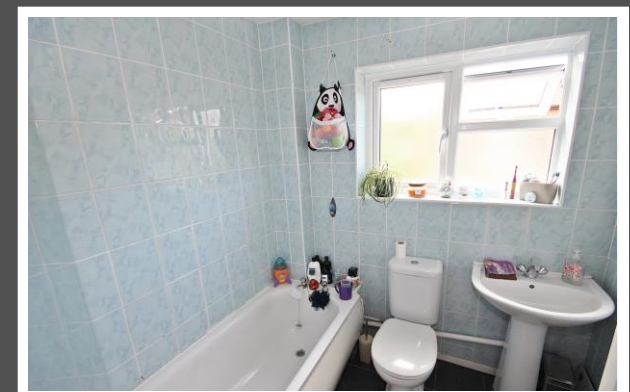


1





Purchased in 2017, this home has been the idyllic place to start a family. Chosen for its close proximity to the woods and fields surrounding Flitwick, as well as ease of access to the local shops, leisure centre, train station and schools, everything we have needed has been within an easy family friendly walking distance. A neighbouring plot of trees and shrubs provides a significant amount of privacy to a lovely south facing garden which has been recently landscaped to maximise the space for bbqs, paddling pools and lots of sunshine. A large mature bay tree also partially shades the patio to make a perfect outside play area, as well as providing leaves for homemade curries!



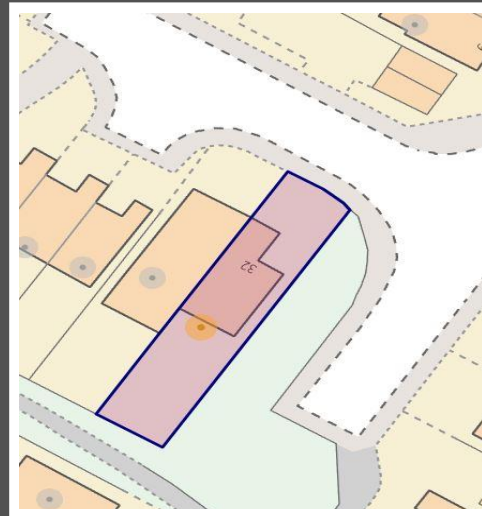
GROUND FLOOR
505 sq.ft. (46.9 sq.m.) approx.

1ST FLOOR
417 sq.ft. (38.7 sq.m.) approx.



TOTAL FLOOR AREA: 922 sq.ft. (85.7 sq.m.) approx.
Drawn by Love Homes for illustrative purposes only. Measurements and areas shown are approximate.

Score	Energy rating	Current	Potential
92+	A		
81-91	B		81 B
69-80	C		
55-68	D		
39-54	E	53 E	
21-38	F		
1-20	G		



These particulars are set out as a general outline in accordance with the Property Misdescriptions Act (1991) only for the guidance of intending purchasers or lessees, and do not constitute any part of an offer or contract. Details are given without any responsibility, and any intending purchasers, lessees or third parties should not rely on them as statements or representations of fact but must satisfy themselves by inspection or otherwise as to the correctness of each of them. We have not carried out a structural survey and the services, appliances and specific fittings have not been tested. All photographs, measurements, floor plans and distances referred to are given as a guide only and should not be relied upon for the purchase of carpets or any other fixtures or fittings. Gardens, roof terraces, balconies and communal gardens as well as tenure and lease details cannot have their accuracy guaranteed for intending purchasers. Lease details, service ground rent (where applicable) are given as a guide only and should be checked and confirmed by your solicitor prior to exchange of contracts. No person in the employment of Love Homes has any authority to make any representation or warranty whatever in relation to this property. Purchase prices, rents or other prices quoted are correct at the date of publication and, unless otherwise stated, are exclusive of VAT. We retain the copyright in all advertising material used to market this Property. All information is as advised by the seller and subject to change. Council tax bands can be subject to change by the local council.

5 The Russell Centre, Coniston Road, Flitwick, MK45 1QY
Tel: 01525 713111

Email: flitwick@lovehomes.uk

www.lovehomes.uk



Love Homes