

St. Davids Road North

Lytham St. Annes

Offers Over **£180,000**

St. Davids Road North

Lytham St. Annes

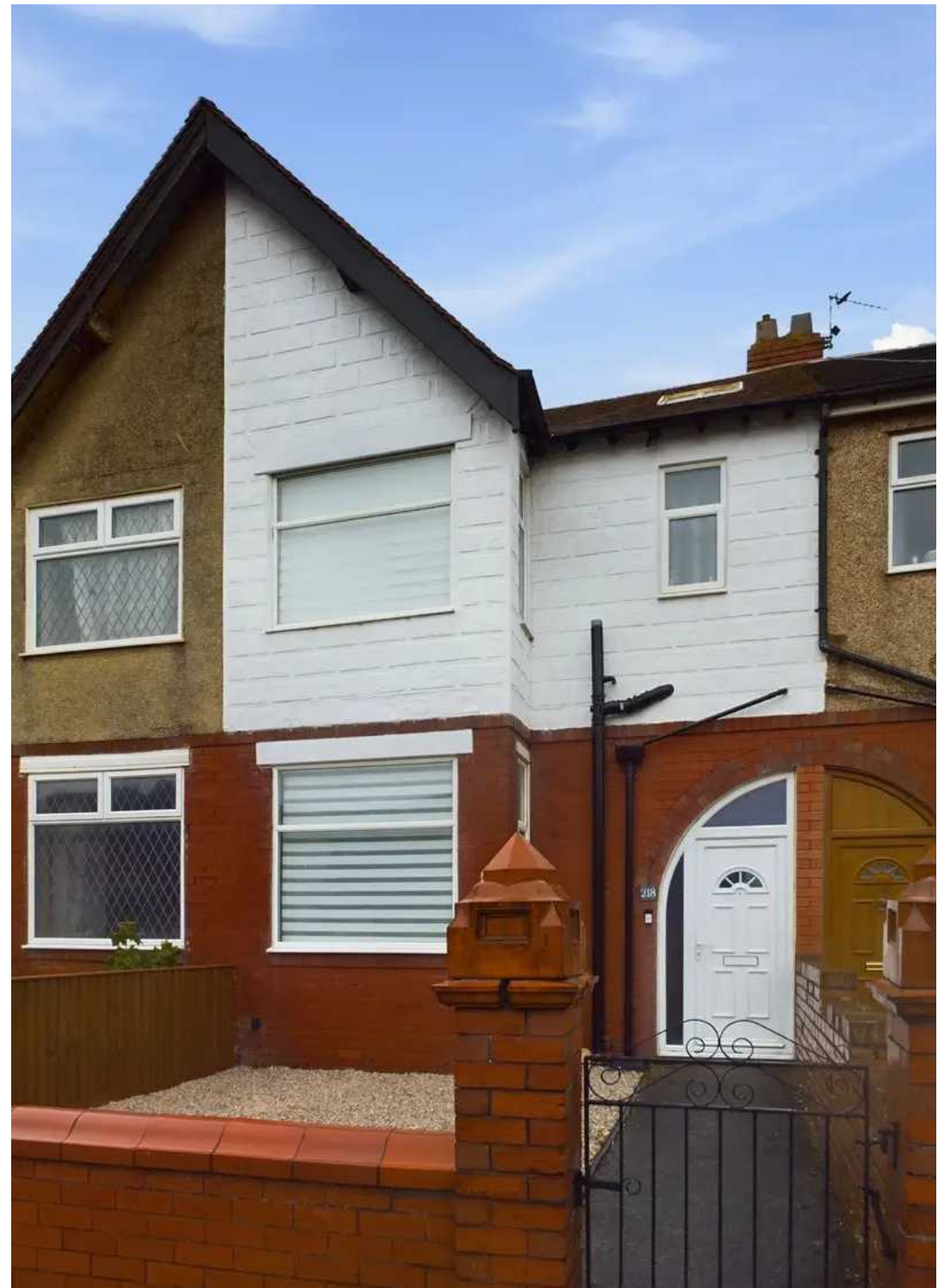
This deceptively spacious 3 bedroom mid-terraced residence is an ideal family sanctuary. Boasting an entrance vestibule leading to a cosy lounge, separate dining room perfect for gatherings, and a well-appointed kitchen for culinary delights. Upstairs reveals three generously sized bedrooms and a stylish three-piece suite bathroom, providing comfortable living spaces for the whole family.

Step outside into the peaceful retreat of the enclosed garden, thoughtfully designed for relaxation and al fresco entertaining. The rear garden features wooden decking, offering a space to unwind, and an artificial lawn for easy maintenance. With the added convenience of rear gate access and a garage, this outdoor haven provides a perfect extension of the living areas indoors, offering a delightful blend of comfort and functionality.

Council Tax band: B

Tenure: Leasehold

- Deceptively Spacious 3 Bedroom Family Home
- Entrance vestibule, Lounge, Dining Room, Kitchen
- 3 Bedrooms, 3 Piece Suite Bathroom
- Garage
- Boiler is located in the small bedroom





Entrance vestibule
2' 9" x 5' 8" (0.85m x 1.72m)

Lounge
17' 10" x 13' 4" (5.44m x 4.07m)

Dining Room
15' 7" x 8' 11" (4.74m x 2.72m)

Kitchen
15' 7" x 6' 10" (4.75m x 2.08m)

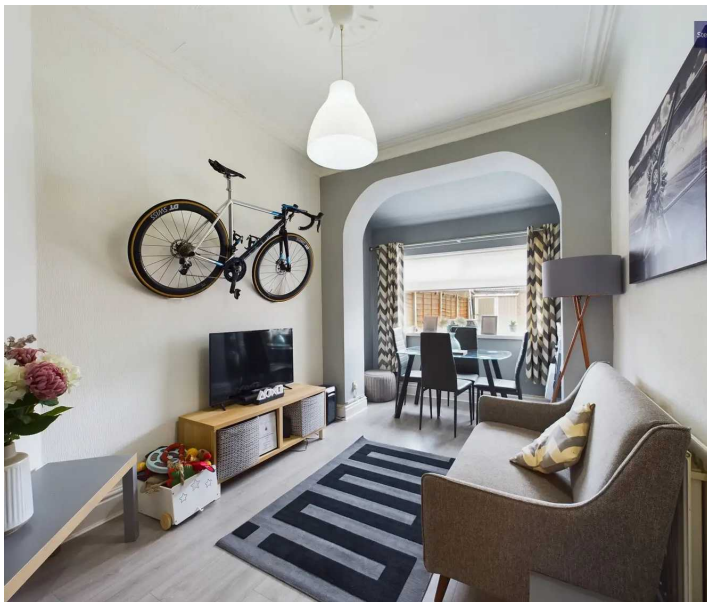
Landing
9' 0" x 3' 10" (2.74m x 1.16m)

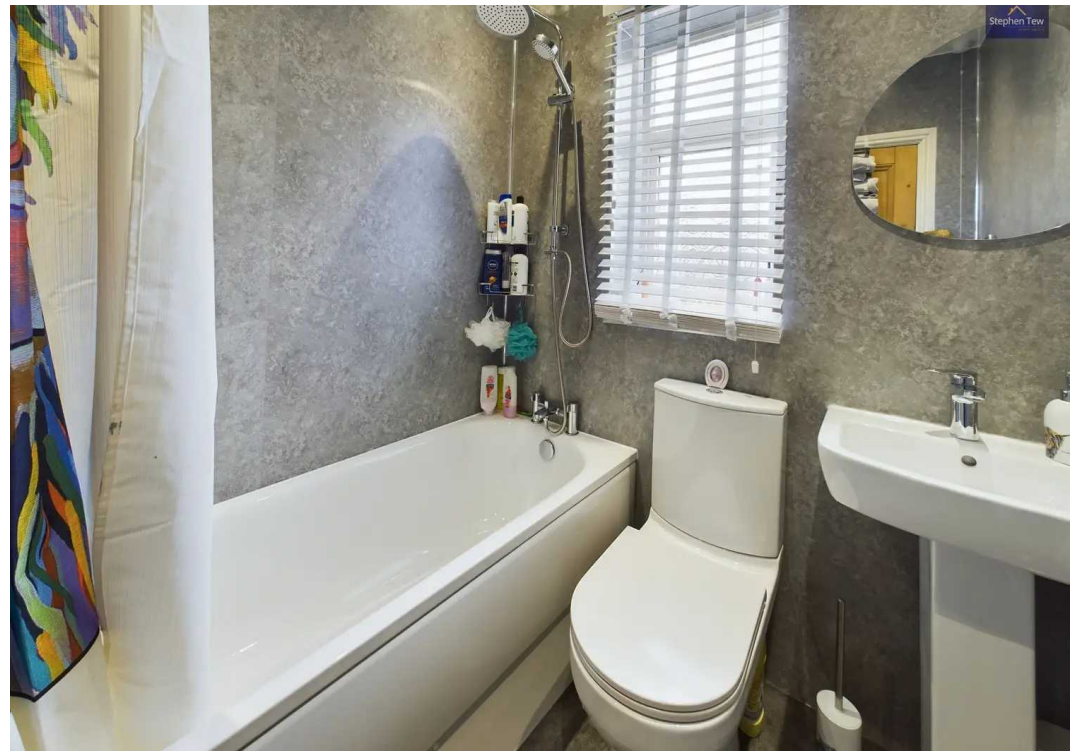
Bedroom 1
17' 8" x 9' 11" (5.39m x 3.02m)

Bedroom 2
11' 9" x 9' 0" (3.58m x 2.74m)

Bedroom 3
11' 8" x 6' 11" (3.56m x 2.11m)

Bathroom
5' 10" x 6' 0" (1.79m x 1.83m)







FRONT GARDEN

REAR GARDEN

Enclosed garden to the rear with wooden decking and artificial lawn. Rear gate access and garage.

GARAGE

Single Garage

Garage to the rear







Stephen Tew Estate Agents

Stephen Tew Estate Agents, 132 Highfield Road - FY4 2HH

01253 401111

info@stephentew.co.uk

www.stephentew.co.uk

