



at Shurland Park

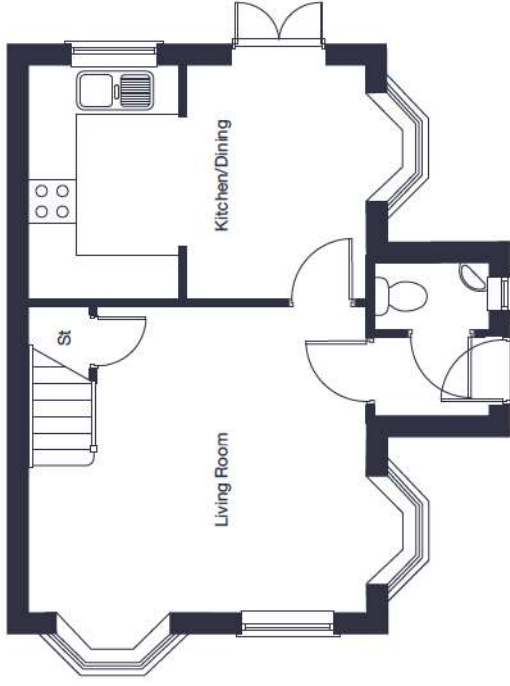
The Thornton

3 bedroom
semi-detached home

jones-homes.co.uk/shurland-park

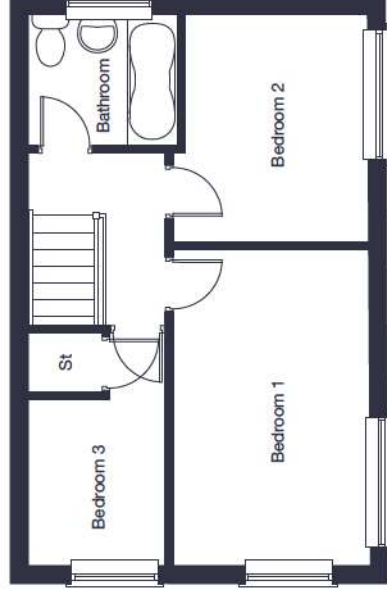
Built with you in mind





Ground Floor

Kitchen/Dining	3.14m x 4.45m (plus bay)	10'4" x 14'7" (plus bay)
Living Room	4.08m x 4.45m (plus bay)	13'5" x 14'7" (plus bay)



First Floor

Bedroom 1	4.21m x 2.55m	13'10" x 8'4"
Bedroom 2	3.01m x 2.40m	9'10" x 7'10"
Bedroom 3	3.08m x 1.81m	10'1" x 5'11"

Floor plans, CGI and image are for guidance and illustrative purposes only and do not form part of any contract. All room sizes are approximate to maximum dimensions and some plots may be subject to additional gable or bay windows. Please ask our Sales Advisor for details on specification and plot specific street scenes. Every effort has been taken to ensure these plans are as accurate as possible at time of printing. However, Jones Homes reserves the right to vary details as may be necessary and without notice. JHS6209/March 2023.