



12 Kirkhill Terrace, Broxburn

Offers Over £128,000



12 Kirkhill Terrace

Broxburn

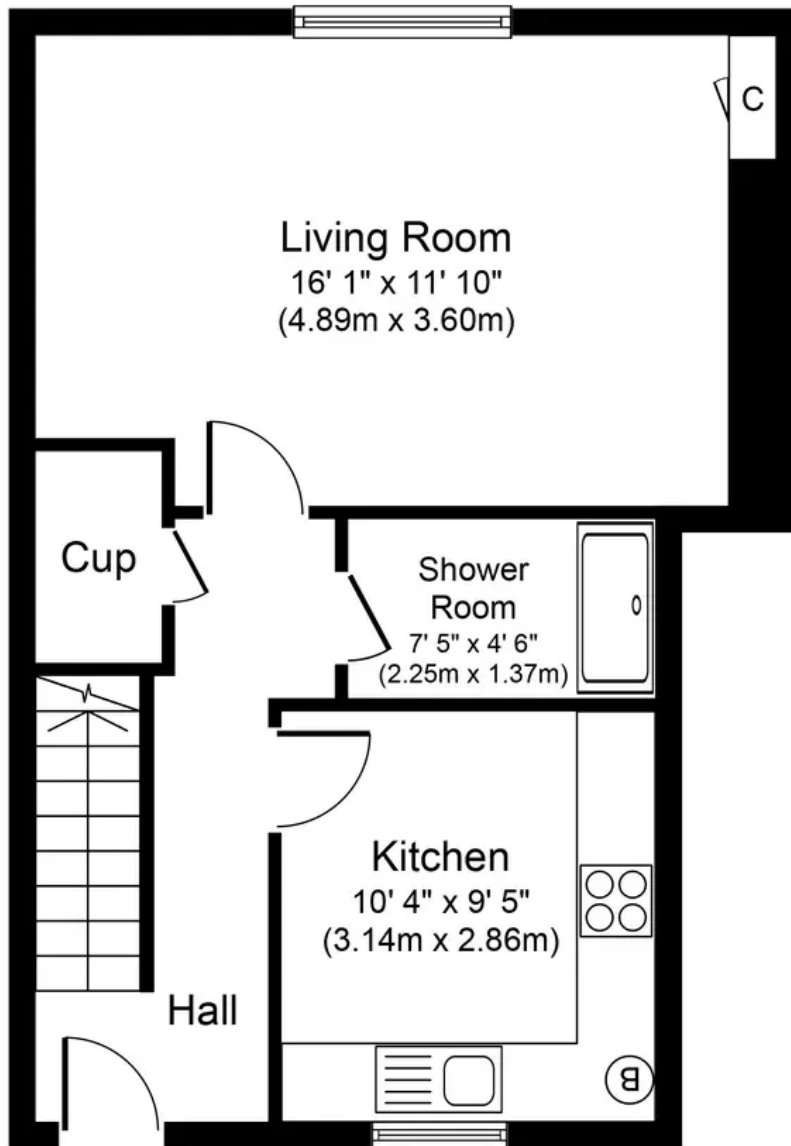
Charming Double Upper Villa with Main Door Entrance, modern kitchen, spacious living room, 2 bedrooms, walk-in wardrobe, garden with shed, parking. Close to amenities. Perfect for first-time buyers and investors. Book a viewing to experience this stylish home!

Council Tax band: B

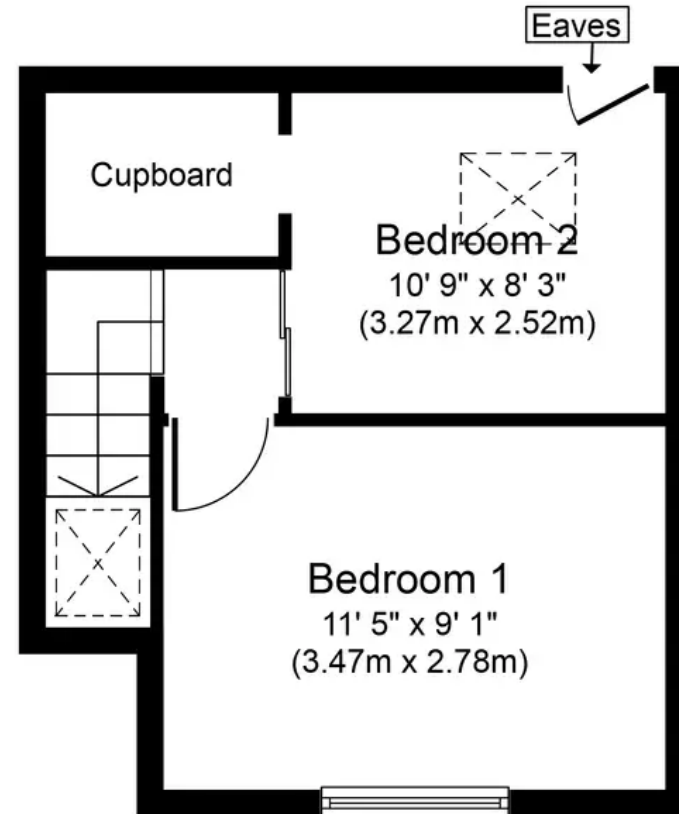
Tenure: Freehold

- Double Upper Villa
- Main Door Entrance
- Two Bedrooms
- Ideal For First Time Buyers Or Investors
- Contemporary Designed Kitchen
- Bedroom Two With Walk In Wardrobe
- Modern Decoration Throughout
- Garden With Shed/Workshop
- Close To Amenities
- Parking To The Rear





Ground Floor
Approximate Floor Area
460 sq. ft.
(42.8 sq. m.)



First Floor
Approximate Floor Area
260 sq. ft.
(24.2 sq. m.)

Whilst every attempt has been made to ensure the accuracy of the floor plan contained here, measurements of doors, windows, rooms and any other items are approximate and no responsibility is taken for any error, omission, or mis-statement. The measurements should not be relied upon for valuation, transaction and/or funding purposes. This plan is for illustrative purposes only and should be used as such by any prospective purchaser or tenant. The services, systems and appliances shown have not been tested and no guarantee as to their operability or efficiency can be given.



KnightBain Estate Agents

Knightbain, 4 Greendykes Road, Broxburn - EH52 5AG

01506 852000

info@knightbain.co.uk

www.knightbain.co.uk/

