

33 Cornelly Street,

Cardiff, CF14 2HQ



Estate Agents and
Chartered Surveyors

Asking Price Of

£280,000



Semi-Detached House

3

1

1

2

Property Description

A well presented three bedroom semi detached property in the heart of Llandaff North. The home is ideal for first time buyers situated in a quiet cul de sac and positioned on a comfortable corner plot. Offering three bedrooms, lounge, kitchen, separate dining room and a family bathroom.

Tenure Freehold

Council Tax Band C

Floor Area Approx TBC

**Viewing Arrangements
Strictly by appointment**

LOCATION

Llandaff North offers a range of shops, cafes and retailers with it's very own train stations and regular public transport links. Haley Park is a high regarded public park offering great walks leading along the Taff Trail towards the secret garden in the city centre. Hawthorn Primary and Ysgol Glantaf comprehensive are also within walking distance.

HALLWAY

Enter via Upvc double glazed front door into hallway. Wall papered walls with textured ceiling, a central light pendant and finished with carpeted flooring. Upvc double glazed window to side. Carpeted staircase leading to first floor with under stair storage. Door leading into lounge and kitchen.

LOUNGE

11' 11" x 13' 7" (3.64m x 4.16m)
Wall papered walls with textured ceilings, a central light pendant and finished with carpeted flooring. Feature fireplace and surround. Upvc double glazed bay window to front.

KITCHEN

10' 11" x 9' 3" (3.33m x 2.82m)
Fitted with a range of base and eye level units with worktops over. Inset one and a half bowl stainless steel sink unit plus drainer. Space for free standing cooker and hob with cooker hood over. Space for washing machine and dishwasher. Tiled splash back with wall papered walls, textured ceiling with central light pendant and finished with tiled flooring. Upvc double glazed window to side and upvc double glazed door to rear garden. Door leading into dining room and single storage cupboard which houses the fridge/freezer.

DINING ROOM

10' 0" x 9' 9" (3.07m x 2.99m)
Wall papered walls with textured ceiling, central light pendant and finished with carpeted flooring. Upvc double glazed window to rear.

LANDING

Wall papered walls with textured ceiling, a central light pendant finished with carpeted flooring. Doors leading to all first floor rooms. Single storage cupboard housing hot water tank. Upvc double glazed window to side.

33 Cornelly Street, Cardiff, CF14 2HQ

BEDROOM ONE

13' 6" x 9' 8" (4.14m x 2.97m)

Wall papered walls with textured ceiling, a central light pendant and finished with carpeted flooring. Built in double wardrobes. Upvc double glazed window to rear.

BEDROOM TWO

10' 11" x 13' 6" maximum (3.34m x 4.12m)

Wall papered walls with textured ceiling, a central light pendant and finished with carpeted flooring. Upvc double glazed window to front.

BEDROOM THREE

7' 1" x 8' 11" (2.18m x 2.72m)

wall papered walls with textured ceiling, a central light pendant and finished with carpeted flooring. Storage in the alcove over the stairs. Upvc double glazed window to front.

OUTSIDE

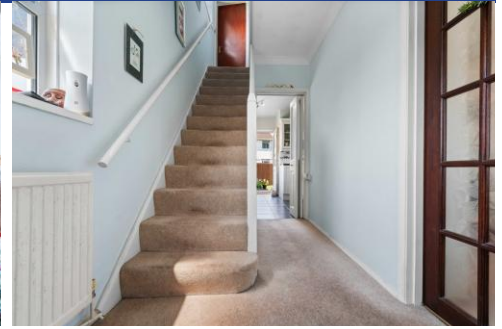
Front - Situated on a spacious corner plot with a front garden mostly laid to lawn with a paved pathway leading to front door. Side access leading to enclosure rear garden.

Rear - An enclosed garden can be found to the rear offering a combinations of paved patio and the remainder laid to lawn. A range of plants, trees and shrubs also border the garden. Outside water tap. Detached outbuildings offer a great storage space. (Can be viewed on appointments)

33 Cornelly Street,
Cardiff, CF14 2HQ



33 Cornelly Street,
Cardiff, CF14 2HQ



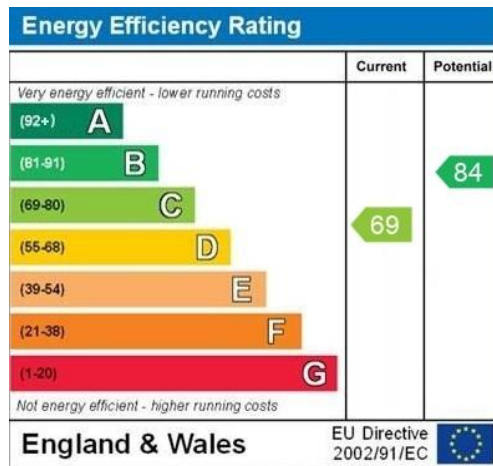
33 Cornelly Street, Cardiff, CF14 2HQ

GROUND FLOOR

1ST FLOOR



Whilst every attempt has been made to ensure the accuracy of the floorplan contained here, measurements of doors, windows, rooms and any other items are approximate and no responsibility is taken for any error, omission or mis-statement. This plan is for illustrative purposes only and should be used as such by any prospective purchaser. The services, systems and appliances shown have not been tested and no guarantee as to their operability or efficiency can be given.
Made with Metropix ©2024



WWW.FPC411.COM

Whitchurch 02922 745848

64 Merthyr Road, Whitchurch, Cardiff, CF14 1DJ



mgyc.co.uk

Important Notice: These particulars are prepared for guidance only and do not form whole or any part of any offer or contract. Whilst the particulars are given in good faith, they are not to be relied upon as being a statement or representation of fact. They are made without responsibility on the part of MGY Ltd or Vendor/lessor and the prospective purchaser/lessee should satisfy themselves by inspection or otherwise as to their accuracy. Neither MGY Ltd nor anyone in their employ, or the vendor/lessor, imply, make or give any representation/warranty whatsoever in relation to this property.