



Dower Cottage L'anciennete, La Route De Ste Marie, St. Mary
£3,100 pcm

BROADLANDS

FINDING YOU A HOME SINCE 1972

Dower Cottage L'Anciennete, La Route De Ste Marie

St. Mary, Jersey

150m west of St Marys village, pub and church.

- Huge premiere bedroom ensuite
- Fully furnished
- Pets negotiable
- Single garage plus parking for 2
- Quaint village location
- On bus route
- Private walled garden
- Multiple reception rooms
- charlie@broadlandsjersey.com



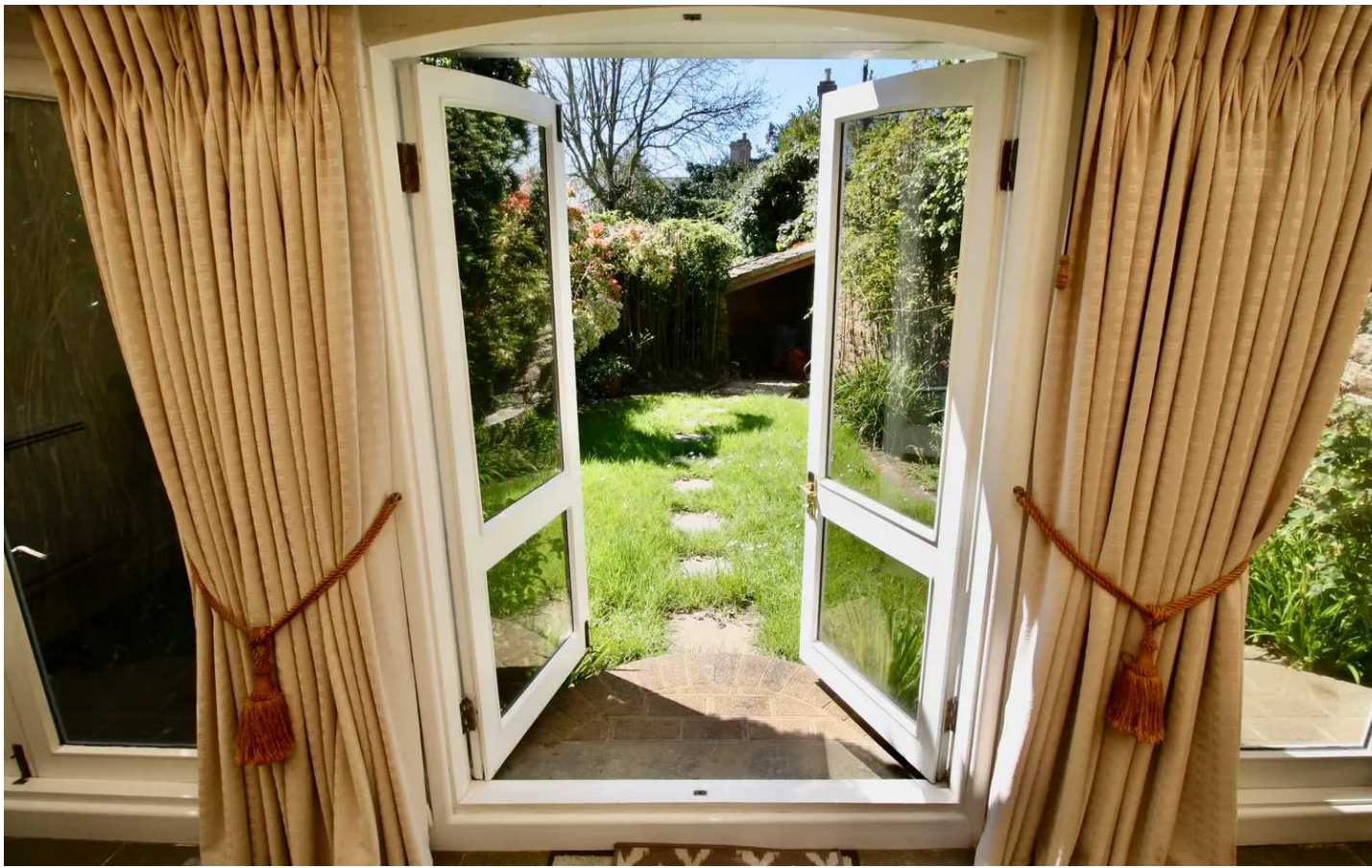
Dower Cottage L'Anciennete, La Route De Ste Marie

St. Mary, Jersey

Exceptionally well appointed 17th century cottage, fully furnished and in great condition, ready to move straight in!

With a date stone of 1659, this grade listed cottage retains it's character but has stepped into the modern world, available to rent furnished with all the modern conveniences you would want it is warm, dry, light and utterly charming. In excellent condition and with good head heights throughout you will find an entrance hall, fully fitted designer kitchen, large living room with feature fireplace, WC and garden room. The first floor features a huge double bedroom, a large single/small double and a house bathroom. The premiere bedroom is surprisingly spacious with large fitted double wardrobes and ensuite bathroom. Featuring designer planted gardens of lush green foliage, a private walled garden to the west and a patio garden space to the east.





Living

Surprisingly, for a 17th century cottage, all rooms have generous head heights. There is an entrance hall, WC, charming kitchen with bespoke cabinetry, breakfast bar, pantry and windows overlooking courtyard. This leads into living room with fireplace, and further garden room with snug and dining table.

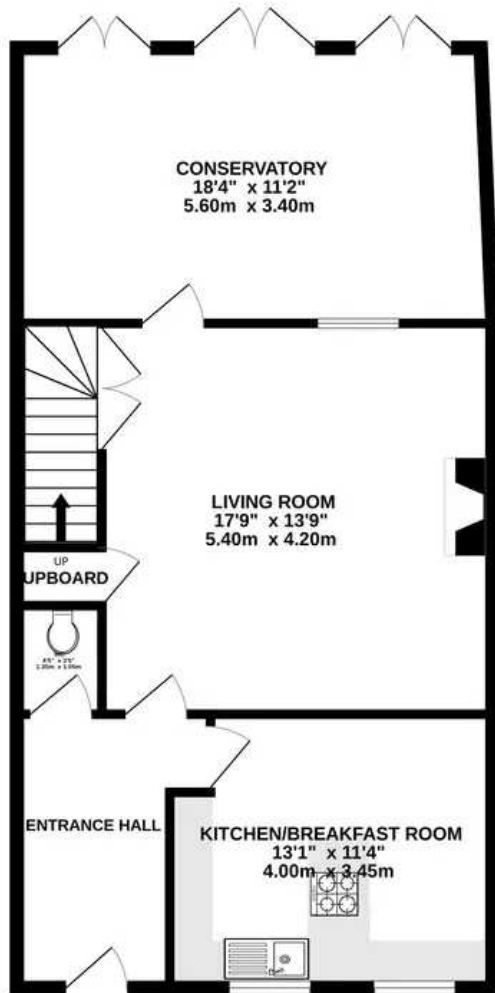
Sleeping

The premiere bedroom has the entire top floor, over 36sqm of space with built in wardrobes, ensuite bathroom, stone details, stained glass windows and additional storage. The second bedroom is large, featuring two single beds, wardrobe and storage. The 3rd bedroom is a large single, with a desk by the window and the character features that abound in this cottage.

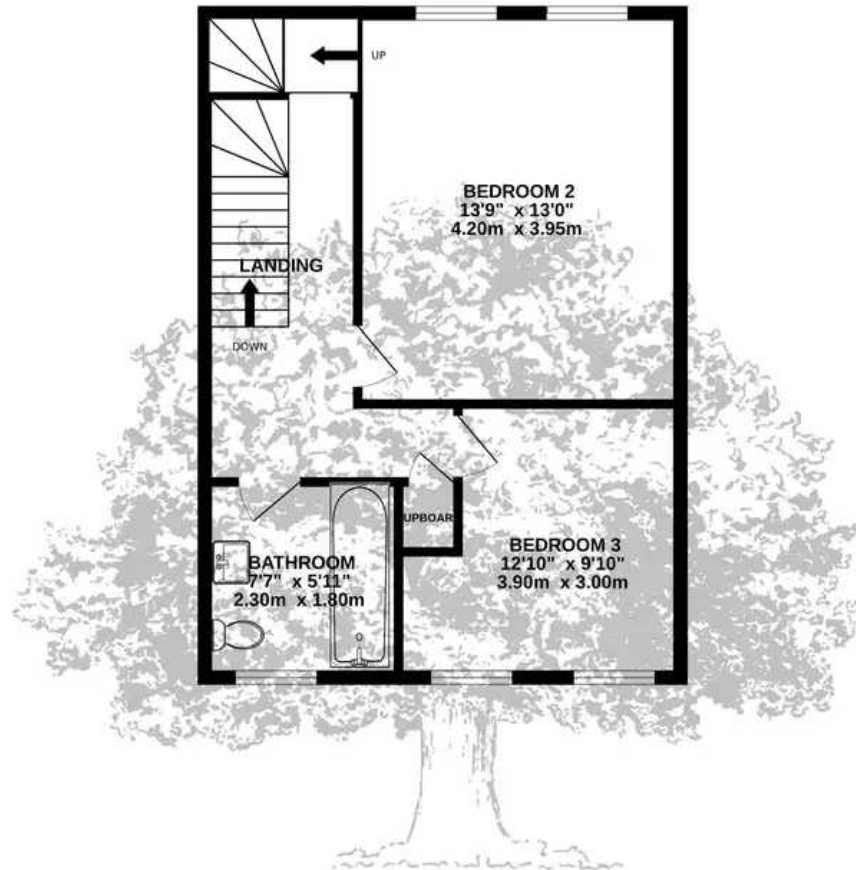




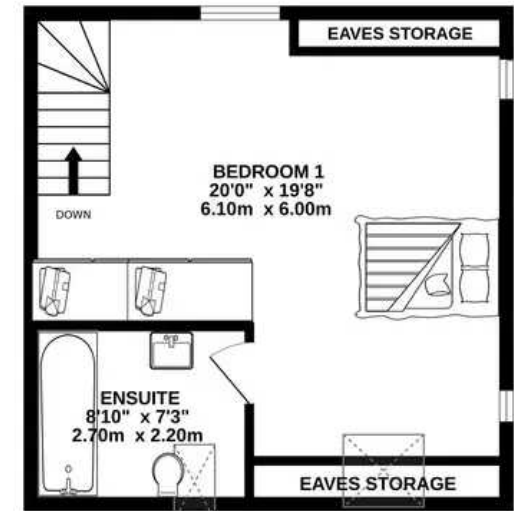
GROUND FLOOR
732 sq.ft. (68.0 sq.m.) approx.



1ST FLOOR
524 sq.ft. (48.7 sq.m.) approx.



2ND FLOOR
387 sq.ft. (36.0 sq.m.) approx.



TOTAL FLOOR AREA : 1644 sq.ft. (152.7 sq.m.) approx.

Whilst every attempt has been made to ensure the accuracy of the floorplan contained here, measurements of doors, windows, rooms and any other items are approximate and no responsibility is taken for any error, omission or mis-statement. This plan is for illustrative purposes only and should be used as such by any prospective purchaser. The services, systems and appliances shown have not been tested and no guarantee as to their operability or efficiency can be given.

Made with Metropix ©2023



Broadlands

Broadlands Estates, Library Place - JE2 3NL

01534 880770 • enquiries@broadlandsjersey.com • www.broadlandsjersey.com/

BROADLANDS

FINDING YOU A HOME SINCE 1972