



Portland Road, Plymouth, PL1 4QN

£400,000 FREEHOLD EPC-D





Portland Road

Plymouth, PL1 4QN

Luxurious 5-bed Victorian home with period charm and modern amenities. Spacious lounge, elegant dining room, large kitchen, modern bathroom, cellar, and level garden. Ideal for comfortable living and entertaining. Close to schools and amenities. Book a viewing today!
Council Tax band: C

Tenure: Freehold

- Large Kitchen/Breakfast Room
- Five Bedroom Victorian Home
- Spacious Lounge with Open Fireplace
- Characteristic Dining Room
- Period Features Throughout
- Located Close to Good Schools and Amenities
- Cellar
- Level Garden
- Four Piece Modern Bathroom Suite
- Generous Master Bedroom



Portland Road

Plymouth, PL1 4QN

Step into luxury/periodic living with this impressive 5-bedroom mid-terraced Victorian home. As you enter the spacious lounge you are greeted an open fireplace, ideal for cosy evenings by the fire, while the characteristic dining room exudes charm and elegance, making it a perfect setting for special occasions. To the rear of the property, a large kitchen/breakfast room, perfect for hosting gatherings or enjoying a quiet Sunday brunch. Throughout the property, period features harmoniously blend with modern amenities, creating a unique and inviting atmosphere. Take advantage of the four-piece modern bathroom suite, adding a touch of luxury to your daily routine whilst the generous master bedroom offers a retreat from the every-day hustle and bustle. The cellar provides additional space for storage or conversion to suit your needs. Located in close proximity to good schools and amenities, this property encapsulates the epitome of comfortable and convenient living. Don't miss the opportunity to call this exquisite property your home.

Step outside into welcoming level garden, where endless evenings in the sun await. Furthermore, the garden enhances the property's appeal, offering a seamless transition from indoor to outdoor living. Embrace the potential of this outdoor space and create your own sanctuary in the heart of this thriving neighbourhood. Contact us today to schedule a viewing today.





First Floor

Approx. 73.1 sq. metres (787.3 sq. feet)



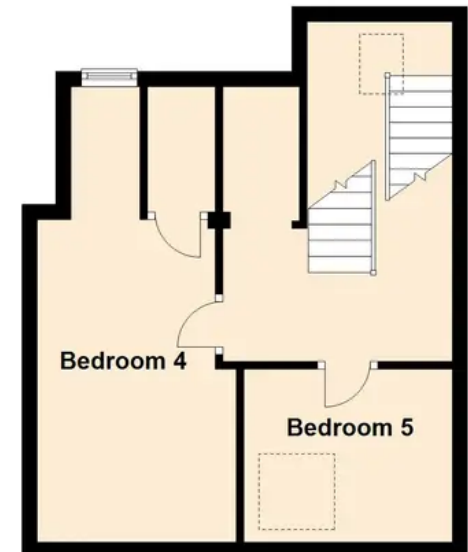
Second Floor

Approx. 72.9 sq. metres (784.4 sq. feet)



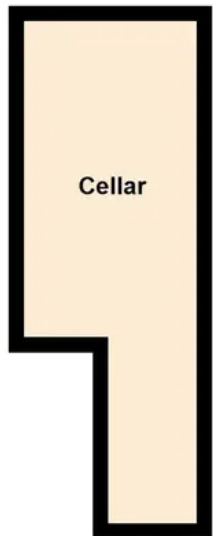
Third Floor

Approx. 34.1 sq. metres (366.6 sq. feet)



Basement

Approx. 12.5 sq. metres (134.0 sq. feet)



Total area: approx. 192.5 sq. metres (2072.3 sq. feet)



Atwell Martin

Atwell Martin, 65 Southside Street – PL1 2LA

01752 202121

plymouthsales@atwell-martin.co.uk

plymouth.atwellmartin.co.uk/

Atwell Martin Plymouth endeavour to ensure the accuracy of property details produced and displayed. Please note that we have not tested any apparatus, equipment, fixtures, fittings or services and so cannot verify that they are connected, in working order or fit for purpose. It is imperative that the buyer of any property makes such checks, prior to purchase so as to satisfy themselves of the properties suitability for their purchase. .