



18 Holly Court

Storrington | West Sussex | RH20 4PE

A first floor purpose built apartment conveniently located close to the village centre with accommodation comprising: two double bedrooms, dual aspect sitting room with south facing balcony overlooking communal gardens, kitchen, walk-in utility room, bathroom. Outside, there is a parking space and communal gardens.

Entrance uPVC front door to:

Entrance Hall Laminate wood style flooring, radiator, access to loft space, built-in storage cupboard.

Large Walk-In Utility Room Plumbing for washing machine.

Dual Aspect Sitting Room 16' 7" x 11' 7" (5.05m x 3.53m) uPVC patio doors leading to south facing balcony overlooking the communal gardens, radiator, TV point.

Kitchen 9' 3" x 7' 10" (2.82m x 2.39m) Dual aspect, uPVC double glazed windows, stainless steel single drainer sink unit with laminate roll top working surfaces, space and plumbing for washing machine, part tiled walls, fan assisted electric oven with separate grill, inset four ring gas hob with extractor over, recessed storage cupboard.

Bedroom One 13' 1" x 10' 10" (3.99m x 3.3m) uPVC double glazed windows, radiator, built-in sliding wardrobe cupboards.

Bedroom Two 13' 1" x 8' 1" (3.99m x 2.46m) Radiator, uPVC double glazed windows.

Bathroom Panelled bath, pedestal wash hand basin, low level flush w.c.

Outside

Parking Parking space and visitor space. (Parking space is £50 on change of ownership and a license is issued).

Communal Gardens

Lease Details & Management Fees Management fees are approx £342 per quarter.

Lease length - 937 years remaining

EPC Rating: Band C.

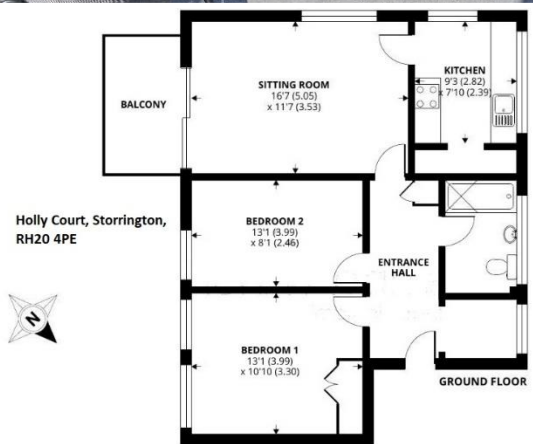


Fowlers Greenfield House, The Square, Storrington, West Sussex, RH20 4DJ

www.fowleronline.co.uk

storrington@fowleronline.co.uk

01903 745844



Important Notice

1. Fowlers wish to inform all prospective purchasers that these sales particulars do not form part of any contract and have been prepared in good faith to give a fair overall viewing of the property.
2. We have not undertaken a structural survey, nor tested that the services, appliances, equipment or facilities are in good working order.
3. Fowlers cannot verify that any necessary consents have been obtained for conversions, extensions and other alterations such as underpinning,

garaging and conservatories etc. Any reference to such alterations is not intended as a statement that any necessary planning or building consents have been obtained and if such details are fundamental to a purchase, then prospective buyers should contact this office for further information or make further enquiries on their own behalf.

4. Any area, boundary, distances or measurements referred to are given as a guide only and should not be relied upon. If such details are fundamental to a purchase, please contact this office for further information.

5. The photographs shown in these details show only certain aspects of the property at the time they were taken. Certain aspects therefore may have changed and it should not be assumed that the property remains precisely as displayed in the photographs.
6. Fowlers cannot verify whether the property and its grounds are subject to any restrictive covenants, rights of way, easements etc, and purchasers are advised to make further enquiries to satisfy themselves on these points.