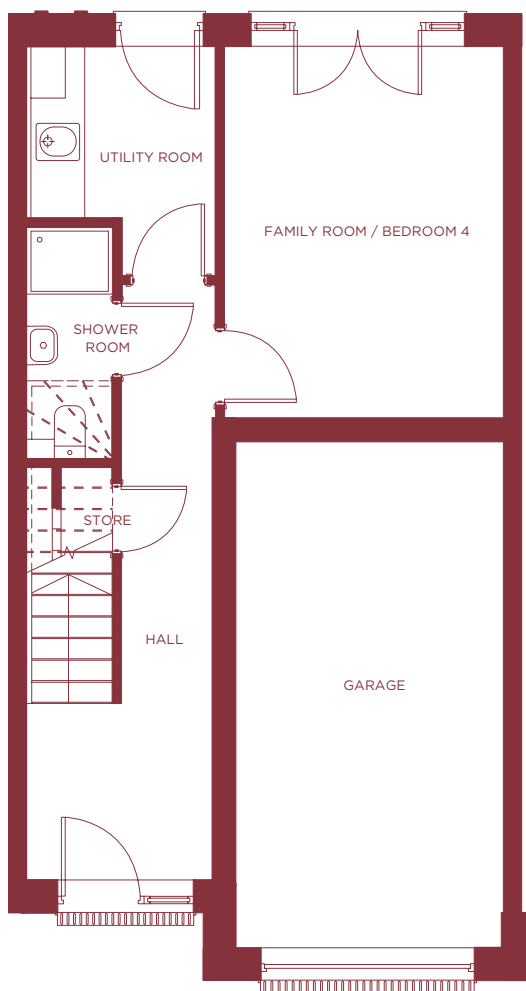


# The Muir

4 bedroom mid terraced villa | 146.7m<sup>2</sup> / 1,579ft<sup>2</sup>

Plot numbers: 8, 9, 10, 13, 14 & 15



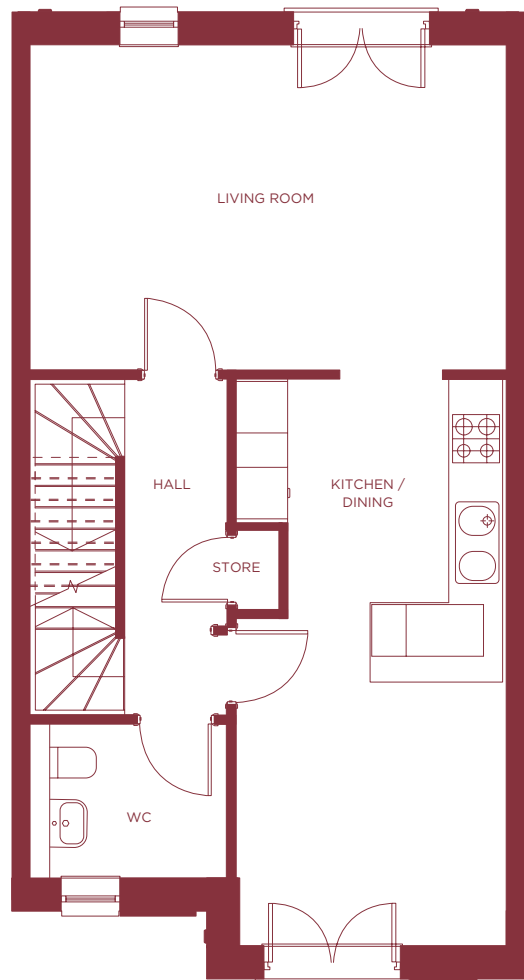
## GROUND FLOOR

Utility Room  
2.67m x 2.15m 8' 9" x 7' 0"

Family Room / Bedroom 4  
4.32m x 3.19m 14' 2" x 10' 5"

Shower Room  
2.70m x 1.00m 8' 10" x 3' 3"

Store  
1.20m x 0.60m 3' 11" x 1' 11"



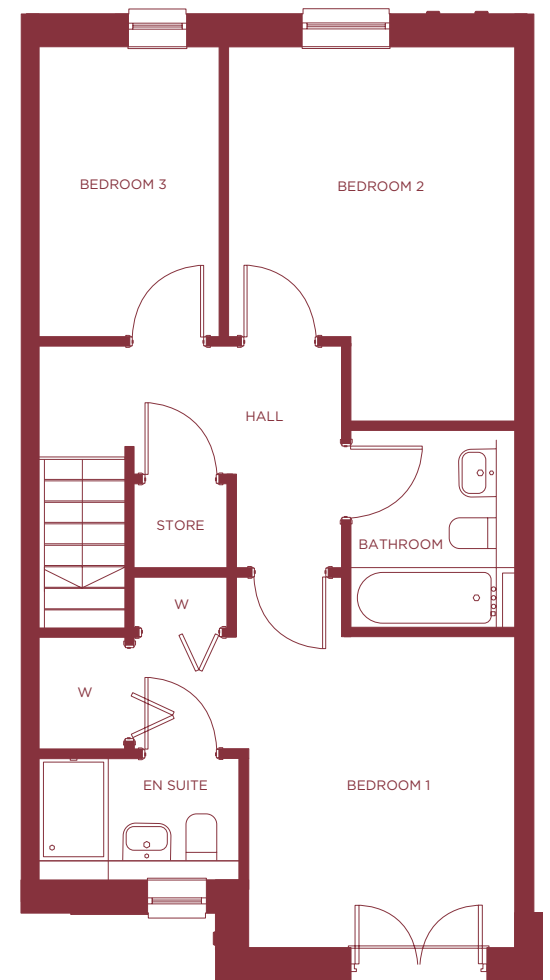
## FIRST FLOOR

Living Room  
5.44m x 3.79m 17' 10" x 12' 5"

Kitchen / Dining  
6.60m x 3.10m 21' 7" x 10' 2"

WC  
2.30m x 1.80m 7' 6" x 5' 10"

Store  
0.93m x 0.50m 3' 0" x 1' 7"



## SECOND FLOOR

Bathroom  
2.30m x 1.93m 7' 6" x 6' 4"

Bedroom 1  
4.39m x 4.32m 14' 4" x 14' 2"

Bedroom 2  
4.36m x 3.30m 14' 3" x 10' 10"

Bedroom 3  
3.38m x 2.10m 11' 1" x 6' 10"

Ensuite  
2.34m x 1.43m 7' 8" x 4' 8"

Store  
1.09m x 0.99m 3' 7" x 3' 3"