

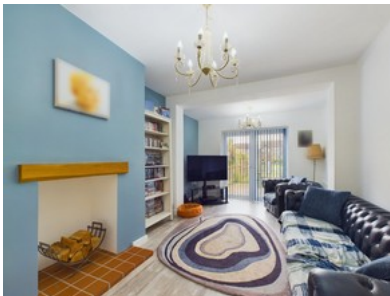
# Woodhall Way, Beverley

## OFFERS OVER £425,000

**beercocks**  
valuing people, not just houses



- ✔ Superb Semi-detached Family Home - Significantly Extended And Enhanced In Recent Years
- ✔ Four Double Bedrooms, En-suite To Principal - Three Reception Rooms
- ✔ Ample Driveway Space, Attached Garage And Store/workshop - Large South-westerly Garden
- ✔ Highly Regarded Molescroft Location - Convenient For Amenities
- ✔ Viewing Essential
- ✔ Freehold
- ✔ Council Tax Band C
- ✔ Epc Rating D



Bedroom 4 Bathroom 2 Reception 3

Offers Over

**£425,000**