



Flat 5, Sandpiper Court Cormorant Way, East Wittering

Guide Price £235,000



Henry Adams
estate agents

Flat 5

Sandpiper Court Cormorant Way,
Chichester

Welcome to this charming two-bedroom ground floor apartment located on Cormorant Way in the picturesque East Wittering.

The apartment offers allocated parking for one vehicle, ensuring convenience for residents. Additionally, the communal gardens provide a tranquil space to unwind after a long day. The absence of a forward chain means a smoother transition for potential buyers, making this property an attractive option for those looking to settle in quickly.

Situated near the beach, local shops, and a bus route, this apartment offers both convenience and a desirable lifestyle. Whether you enjoy leisurely strolls along the coast or quick access to amenities, this location caters to a variety of preferences.

Don't miss out on the opportunity to own this lovely flat in East Wittering. Contact us today to arrange a viewing and take the first step towards making this property your new home.

This property is sold on a Leasehold basis.

999 remaining from 1986

Council Tax band: C

Tenure: Leasehold

- South-facing communal gardens
- Allocated parking space
- Short walking distance to local shops and bus route
- Near the beach
- No forward chain









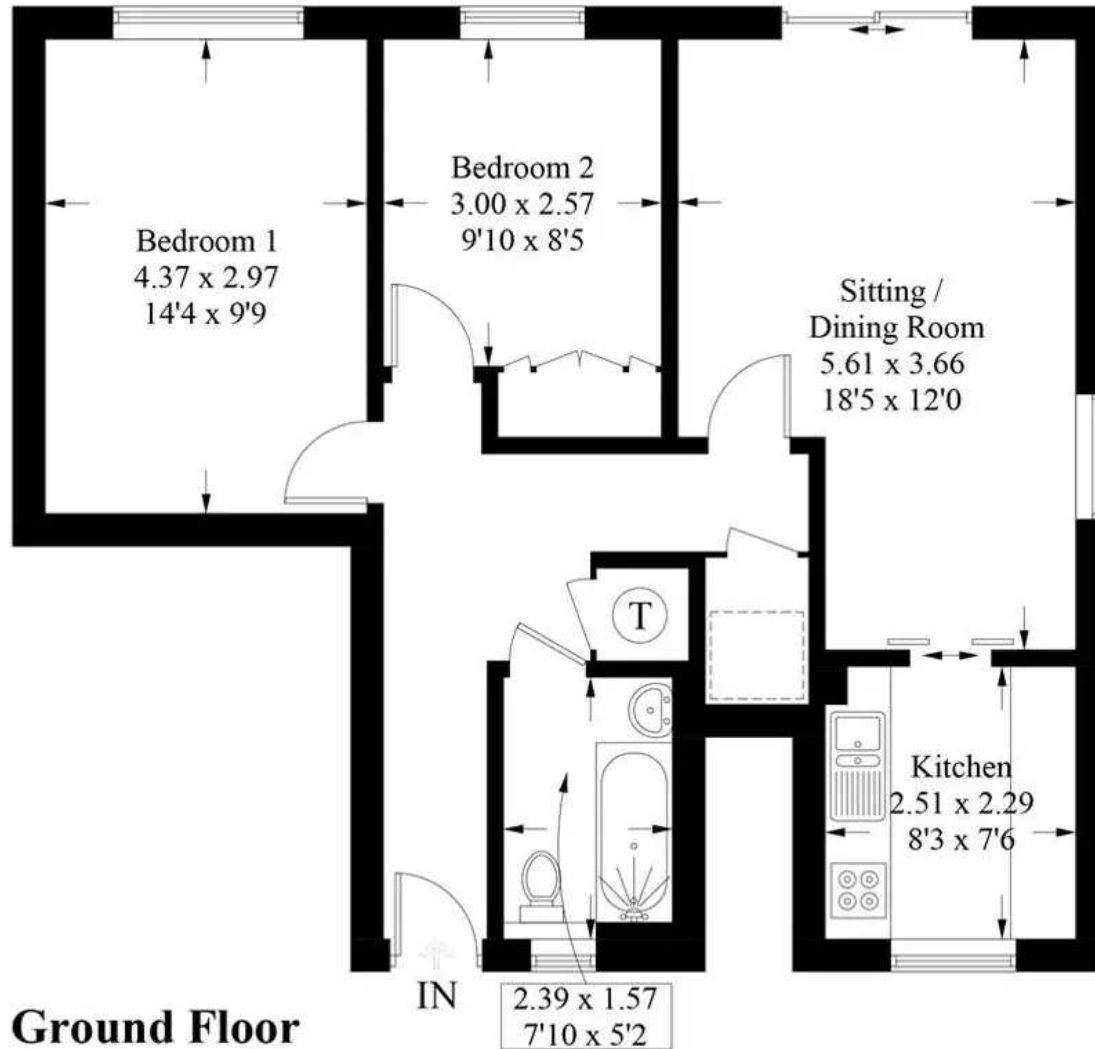


Cormorant Way, PO20 8RD

Approximate Gross Internal Area
63.2 sq m / 680 sq ft



= Reduced headroom below 1.5m / 5'0



Ground Floor

These plans are for illustration purposes only as defined by RICS - Code of Measuring Practice.
Not to scale. Created by Emzo Marketing



Henry Adams – East Wittering

Henry Adams LLP, 14 Shore Road, East Wittering – PO20 8DZ

01243 672721

eastwittering@henryadams.co.uk

www.henryadams.co.uk/

Agents Note – Our particulars are for guidance only and are intended to give a fair overall summary of the property. They do not form part of any contract or offer, and should not be relied upon as a statement or representation of fact. Measurements, areas and distances are approximate only. Photographs may include lifestyle shots and pictures of local views. No undertaking is given as to the structural condition of the property, or any necessary consents or the operating ability or efficiency of any service, system or appliance. Please ask if you would like further information, especially before you travel to the property.