



25 Garn Road, Nantyglo, NP23 4NZ

Offers Over - £125,000 Freehold

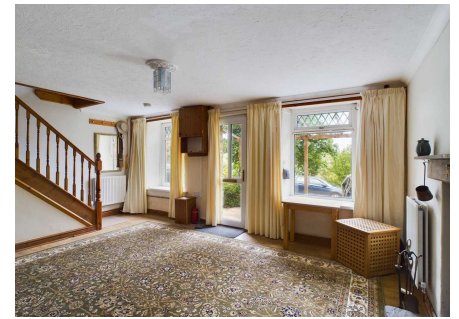
Terrace Cottage • Lounge/Dining Room • Kitchen • Two Bedrooms • Bathroom and En-suite Shower Room • Gardens • Off Road Parking



1 Bethcar Street, Ebbw Vale, Gwent, NP23 6HH
Tel: 01495 302301 Email: ebbwvale@bidmeadcook.co.uk
www.bidmeadcook.co.uk

A mid-terrace cottage having period features including an open fireplace housing a wood burning stove, bread oven and a stone staircase concealed to the side. From its elevated position the property enjoys a far-reaching outlook over the valley with a view of the historical Round Towers, built in Nantyglo circa 1816. The accommodation comprises an open-plan lounge/dining room with open staircase leading to the first floor, kitchen, rear lobby/utility area and bathroom. To the first floor are two bedrooms, one having an en-suite shower room. The property benefits from UPVC double glazing, a combi-gas central heating system, rear garden with lawn, paved seating area, storage shed, woodstore and greenhouse. To the front of the property is a garden and off road parking.

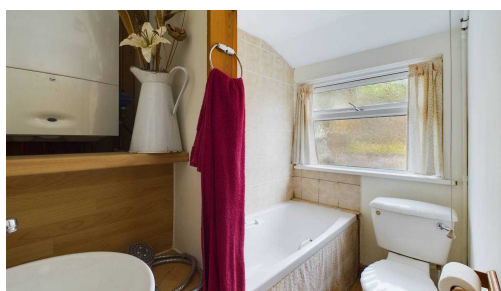
Agents Note: We are advised the property was re-wired during April 2024.

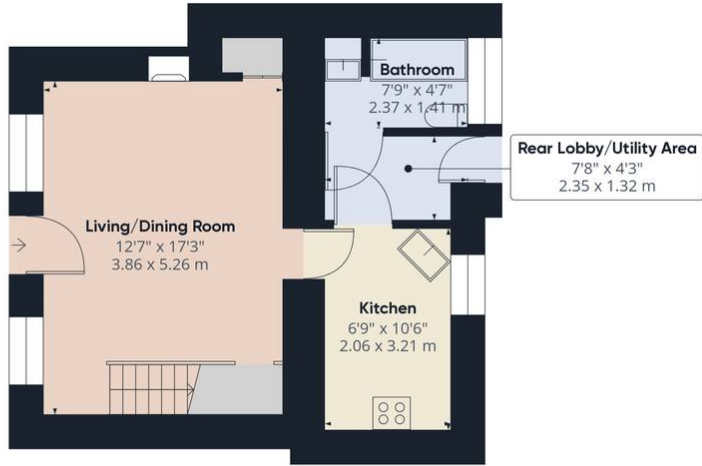


Council Tax band: A

Tenure: Freehold

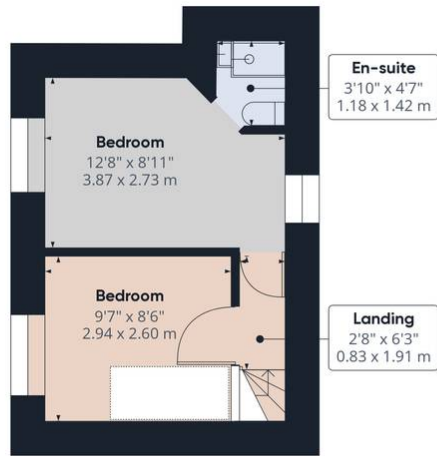
EPC Energy Efficiency Rating: C





Ground Floor

Approximate total area⁽¹⁾
594.73 ft²
55.25 m²



Floor 1

(1) Excluding balconies and terraces

While every attempt has been made to ensure accuracy, all measurements are approximate, not to scale. This floor plan is for illustrative purposes only.

GIRAFFE360



No statement in these details is to be relied upon as representation of fact, and purchasers should satisfy themselves by inspection or otherwise as to the accuracy of the statements contain within. These details do not constitute any part of any offer or contract. Bidmead Cook and their employees and agents do not have any authority to give warranty or representation whatsoever in respect of this property. These details and all statements herein are provided without any responsibility on the part of Bidmead Cook or the vendors. Equipment: Bidmead Cook has not tested the equipment or central heating system mentioned in these particulars and the purchaser are advised to satisfy themselves as to the working order and condition. Measurements: Great care is taken when measuring, but measurements should not be relied upon for ordering carpets, equipment etc. The Laws of copyright protect this material. Bidmead Cook is the owner of the copyright. This property sheet forms part of our database and is protected by the database right and copyright laws. No unauthorised copying or distribution without permission.
Bidmead Cook is a trading name of BC Acquisition Ltd., Registered in England No.14967217